



Photo Album for Winslow Fire Department, ME Job 34817 September 04, 2020

This week your apparatus completed the final assembly process and was placed in a staging area. It may remain in this staging area until your aerial device arrives and is ready for installation.



DSC06000



DSC06001



DSC06002



DSC06003



DSC06004



DSC06005



DSC06006



DSC06007



DSC06008



DSC06009



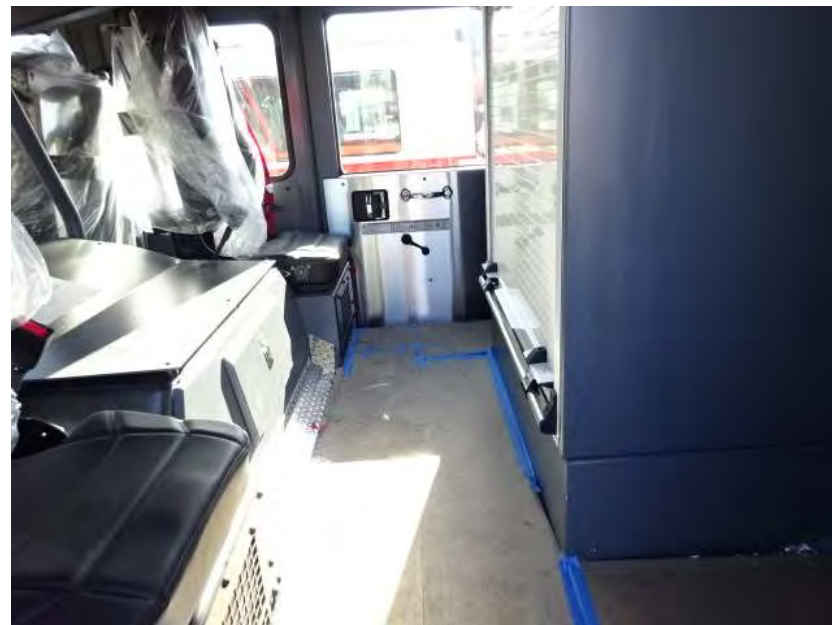
DSC06010



DSC06011



DSC06012



DSC06013



DSC06014



DSC06015



DSC06016



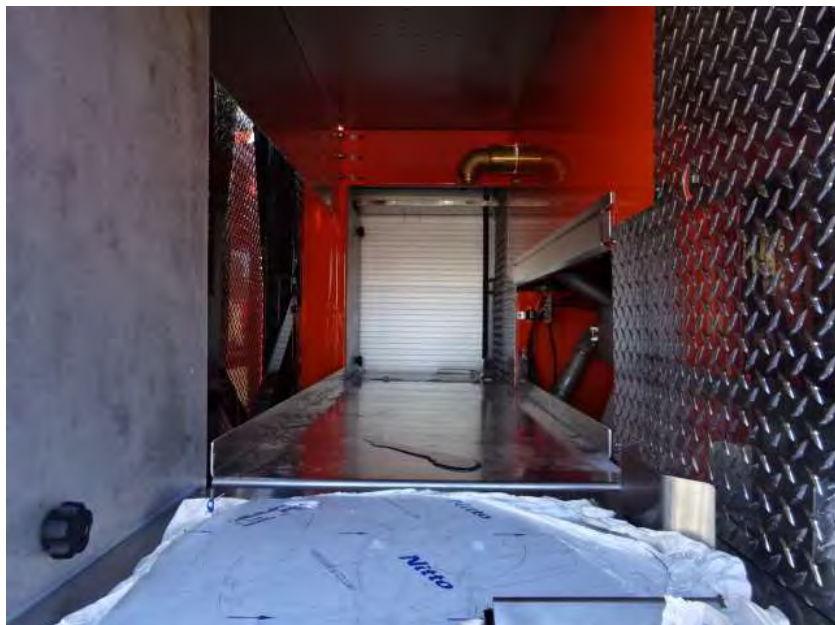
DSC06017



DSC06018



DSC06019



DSC06020



DSC06021



DSC06022



DSC06023



DSC06024



DSC06025



DSC06026



DSC06027



DSC06028



DSC06029



DSC06030



DSC06031



DSC06032



DSC06033



DSC06034



DSC06035



DSC06036



DSC06037



DSC06038



DSC06039



DSC06040



DSC06041



DSC06042



DSC06043



DSC06044



DSC06045



DSC06046



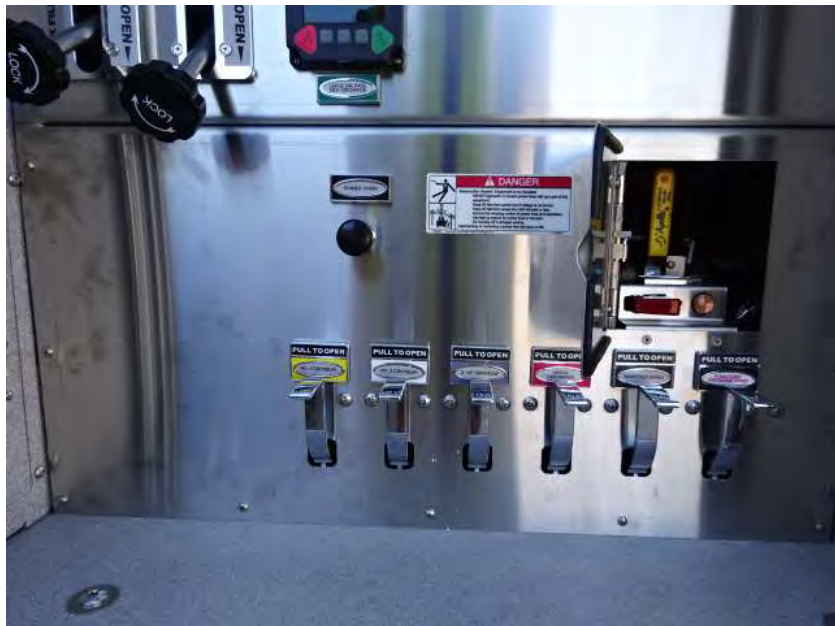
DSC06047



DSC06048



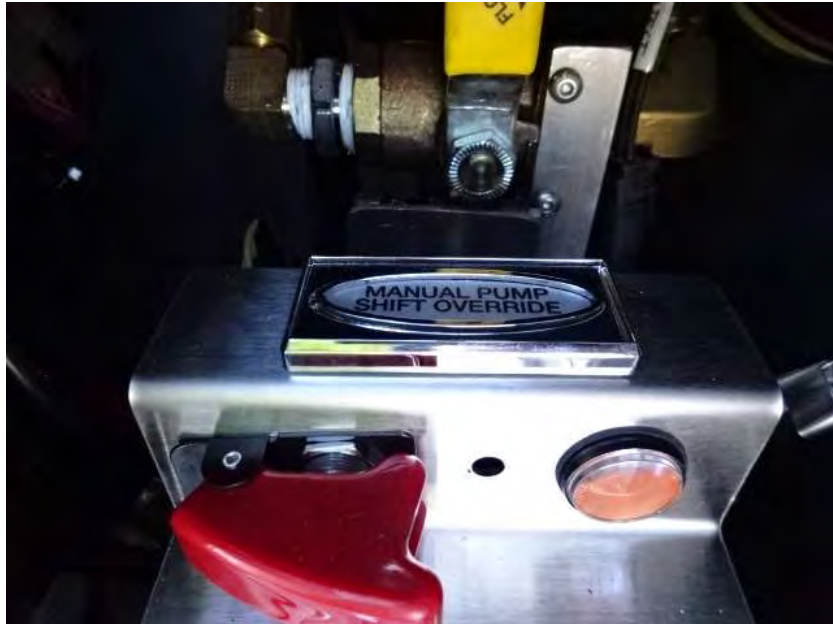
DSC06049



DSC06050



DSC06051



DSC06052



DSC06053



DSC06054



DSC06055



DSC06056



DSC06057



DSC06058



DSC06059

Pierce MANUFACTURING, INC. CONTINUOUS POWER SUPPLY RATING	
VOLTAGE(S)	120 VAC
FREQUENCY	60 HZ
PHASE	SINGLE
CURRENT	30 A
POWER	3,600 W
MINIMUM ENGINE SPEED	700 RPM
HARRISON MSV 3.6K, 700	



DSC06060



DSC06061



DSC06062



DSC06063



DSC06064



DSC06065



DSC06066



DSC06067



DSC06068



DSC06069



DSC06070



DSC06071



DSC06072



DSC06073



DSC06074



DSC06075



DSC06076



DSC06077



DSC06078



DSC06079



DSC06080



DSC06081



DSC06082



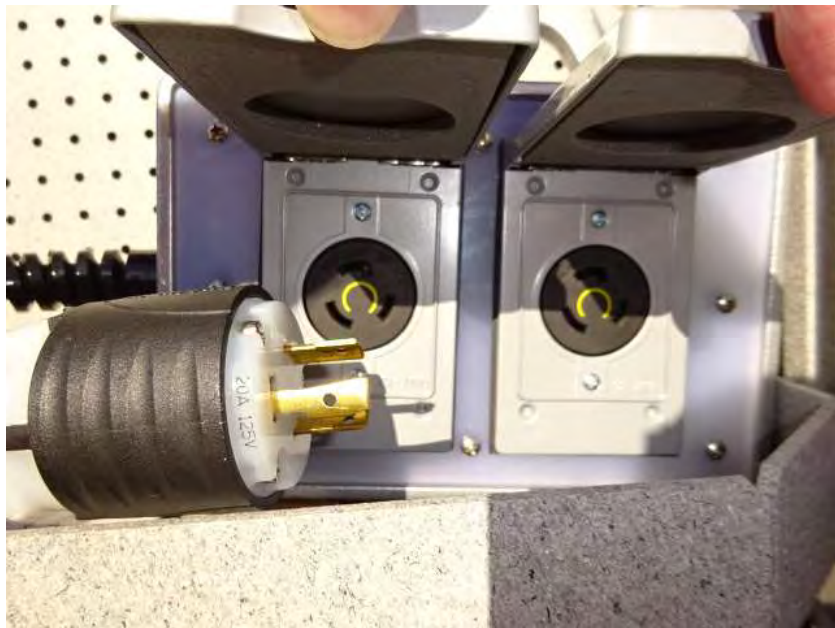
DSC06083



DSC06084



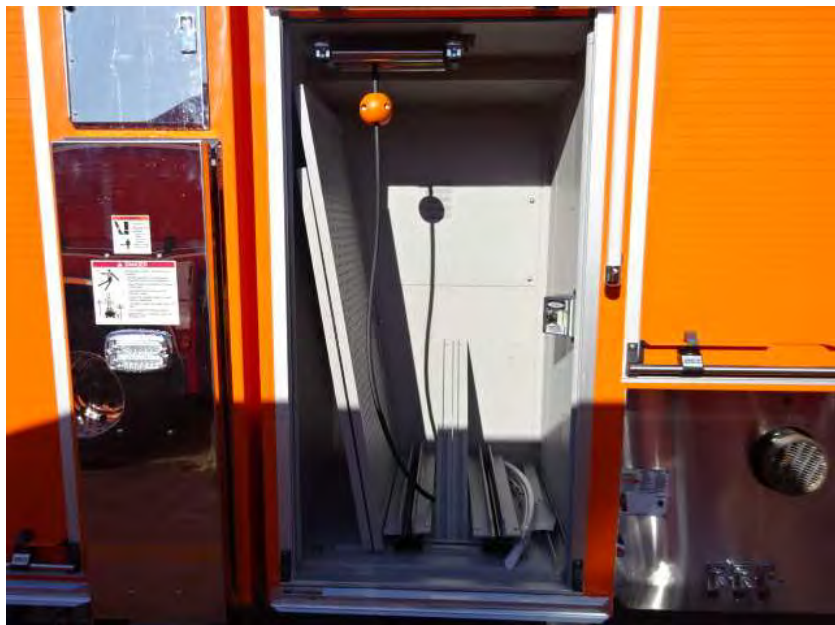
DSC06085



DSC06086



DSC06087



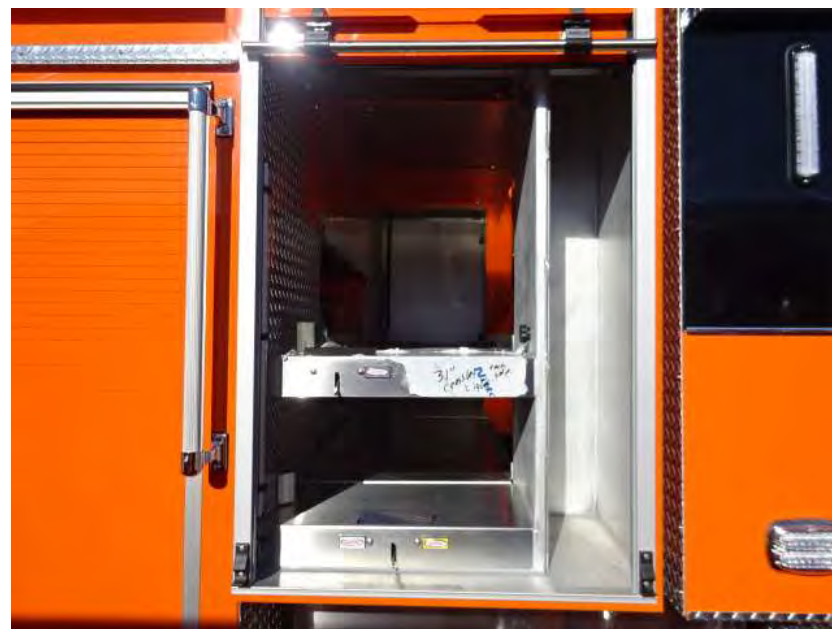
DSC06088



DSC06089



DSC06090



DSC06091



DSC06096



DSC06097



DSC06098



DSC06099



DSC06100



DSC06101



DSC06102



DSC06103



DSC06104



DSC06105



DSC06106



DSC06107



DSC06108



DSC06109



DSC06110



DSC06111



DSC06112



DSC06113



DSC06114



DSC06115



DSC06116



DSC06117



DSC06118



DSC06119



DSC06120



DSC06121