

In-Production Photo Report for Marlborough Fire Department, MA Job# 39612

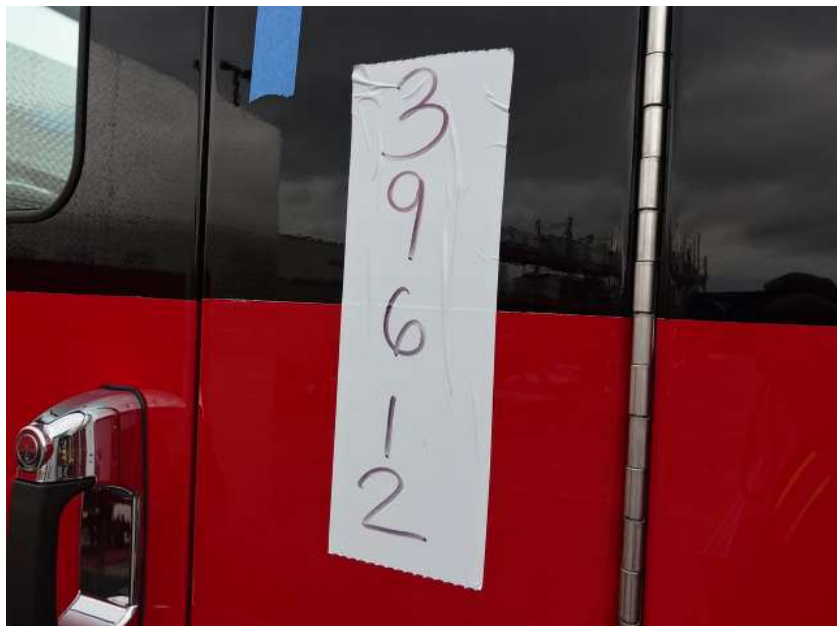
Status as of July 28, 2023

Since your last report the cab completed initial assembly and was staged, the frame build began, the pump house remained staged, the body began initial assembly, and the aerial device arrived and was staged. In the next report the cab may remain staged, the frame build may continue, the pump house may remain staged, the body may continue initial assembly, and the aerial device may remain staged to begin assembly.

For Valued Customers of



POWERED BY
ALLEGIANCE
TRUCKS®



DSC00422



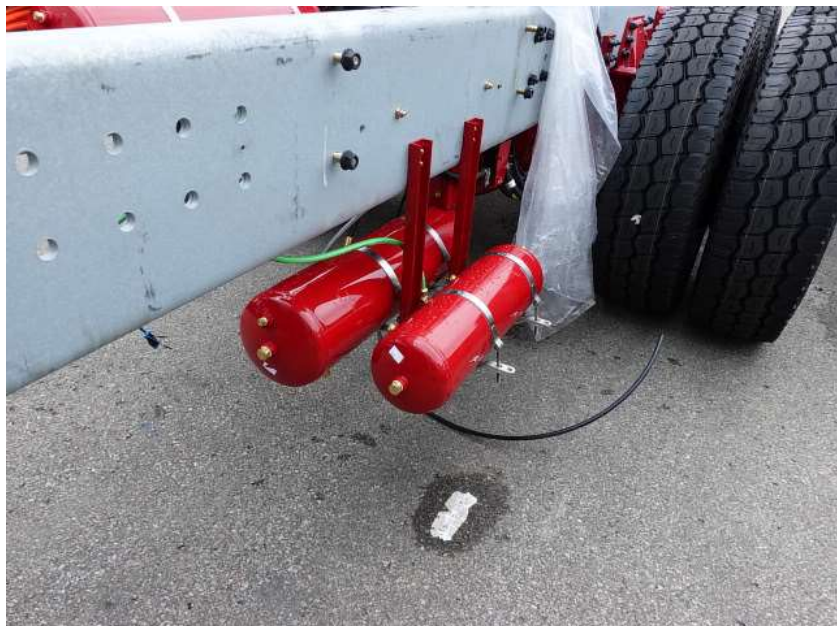
DSC00423



DSC00372



DSC00373



DSC00374



DSC00375



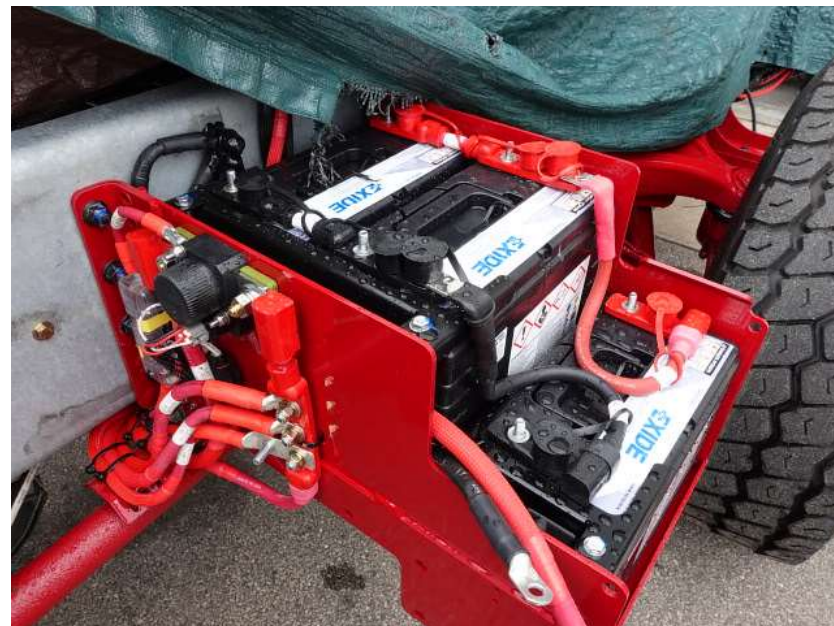
DSC00376



DSC00377



DSC00378



DSC00379



DSC00380



DSC00316



DSC00317



DSC00318



DSC00319



DSC01407



DSC01408



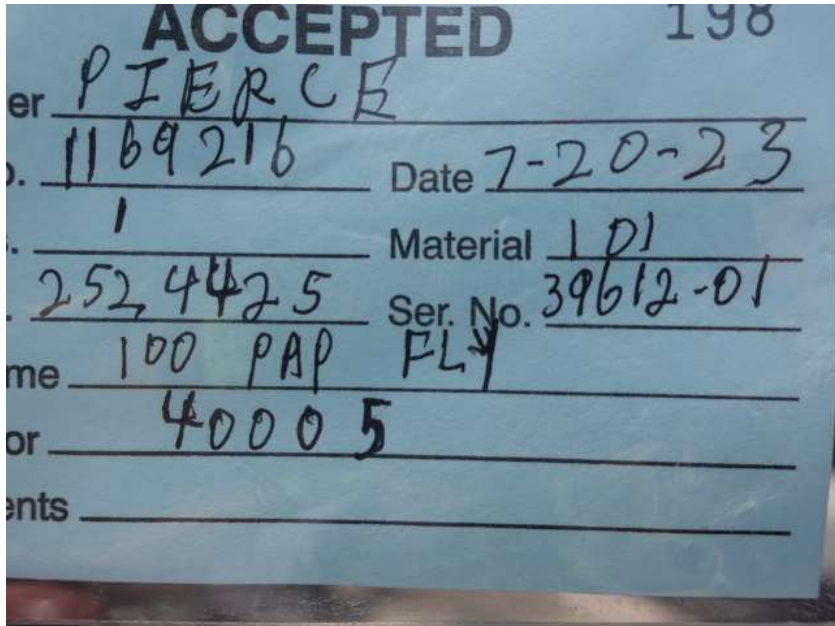
DSC01409



DSC01410



DSC01411



DSC03028



DSC03029



DSC03030



DSC03031



DSC03032



DSC03033



<https://allegiancefr.com>

POWERED BY
ALLEGIANCE
— TRUCKS® —



An Oshkosh Corporation Company