

In-Production Photo Report for Cambridge Fire Department, MA Job# 38010-01

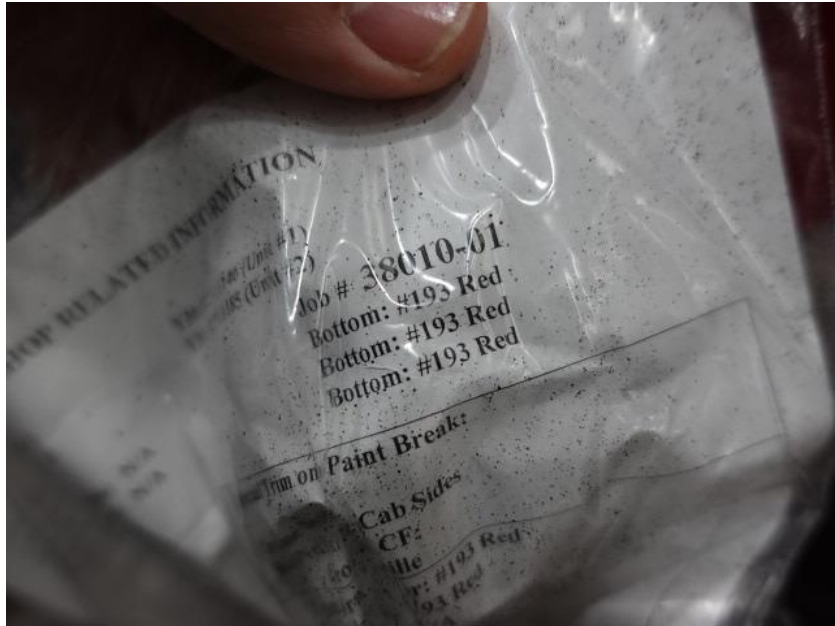
Status as of December 08, 2023

In this report the cab continued through paint, the pump house structure remained staged, and the body began fabrication. In the next report your cab may continue the paint process, the pump house structure may remain staged, and the body may continue fabrication.



POWERED BY
ALLEGIANCE
TRUCKS®

For Valued Customers of



DSC00644



DSC00645



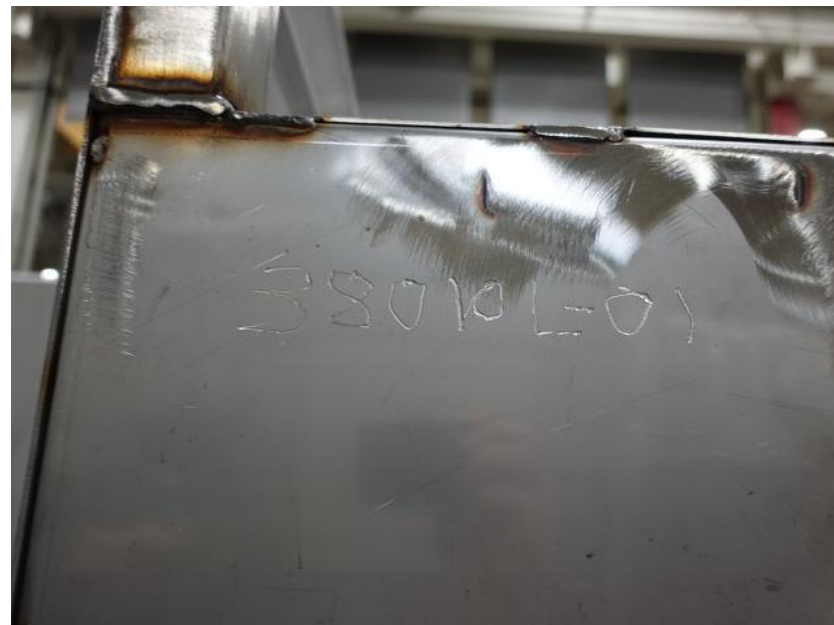
DSC00646



DSC00068



DSC00069



DSC00029



DSC00030



DSC00031



DSC00032



DSC00033



<https://allegiancefr.com>

POWERED BY
ALLEGIANCE
— T R U C K S —



An Oshkosh Corporation Company