

In-Production Photo Report for Cambridge Fire Department, MA Job# 38010-01

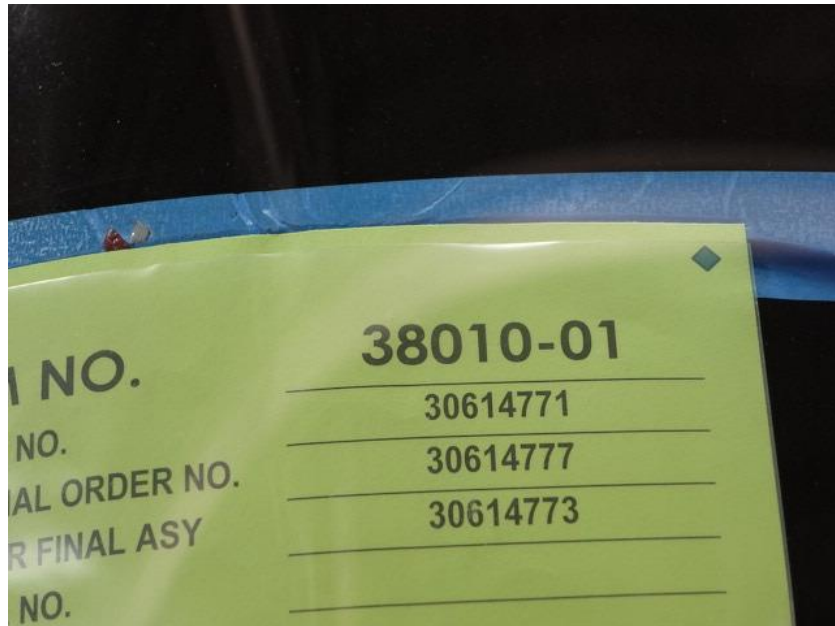
Status as of February 02, 2024

In this report the body was merged with the chassis followed by the start of initial assembly. In the next report initial assembly may continue.



POWERED BY
ALLEGIANCE
TRUCKS®

For Valued Customers of



DSC03047



DSC03048



DSC03049



DSC03050



DSC03051



DSC03052



DSC03053



DSC03054



DSC03055



<https://allegiancefr.com>

POWERED BY
ALLEGIANCE
— TRUCKS® —



An Oshkosh Corporation Company