

In-Production Photo Report for Cambridge Fire Department, MA Job# 38010-02

Status as of January 12, 2024

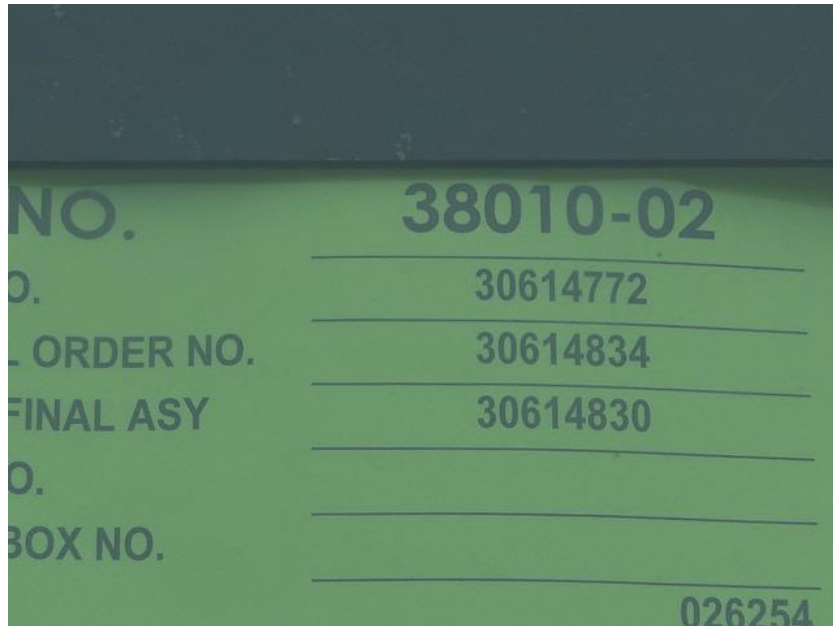
In this report your cab was staged to continue initial assembly, the pump house continued initial assembly, and the body began the paint process. In the next report your cab may remain staged, the pump house may continue initial assembly, and the body may continue through paint.



For Valued Customers of



POWERED BY
ALLEGIANCE
TRUCKS®



DSC03238



DSC03239



DSC03240



DSC00451



DSC00452



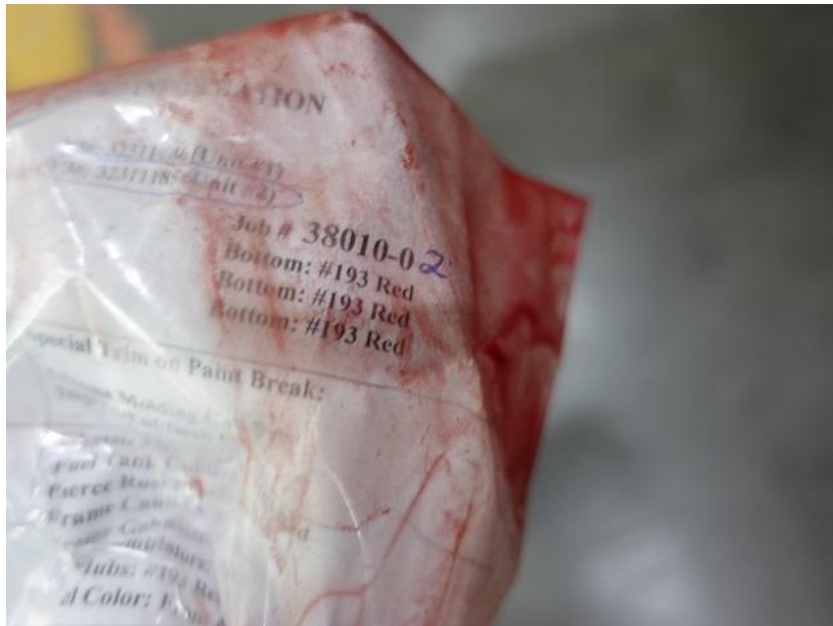
DSC00453



DSC00454



DSC00455



DSC00574



DSC00575



DSC00576



DSC00577



DSC00578



<https://allegiancefr.com>

POWERED BY
ALLEGIANCE
— TRUCKS® —



An Oshkosh Corporation Company