

In-Production Photo Report for Cambridge Fire Department, MA Job# 38010-02

Status as of February 02, 2024

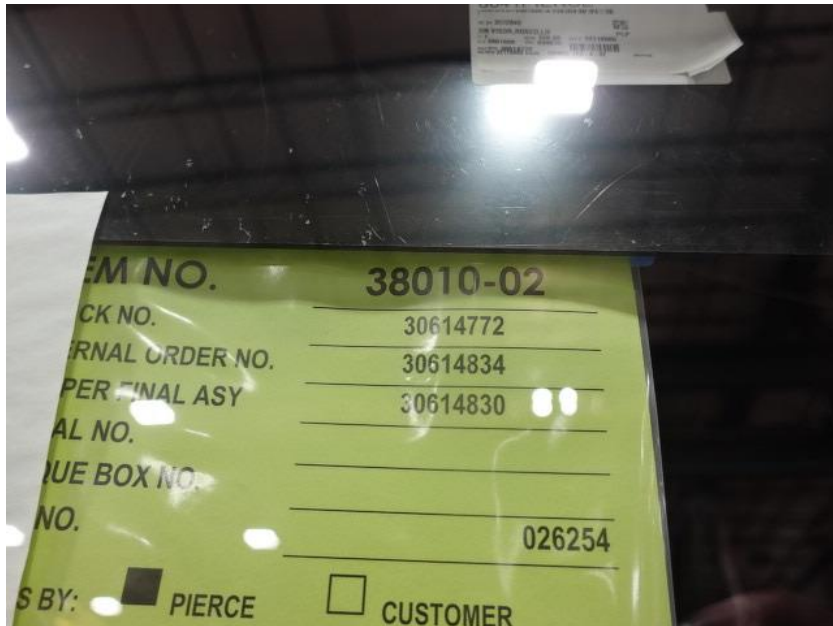
In this report your cab completed initial assembly and was installed on the frame while the pump house was queued for installation and the body completed initial assembly. In the next report the pump house may be installed on the chassis followed by the body being merged and the start of initial assembly.



For Valued Customers of



POWERED BY
ALLEGIANCE
TRUCKS®



DSC00224



DSC00225



DSC00226



DSC00227



DSC00228



DSC00229



DSC00230



DSC00231



DSC00232



DSC00233



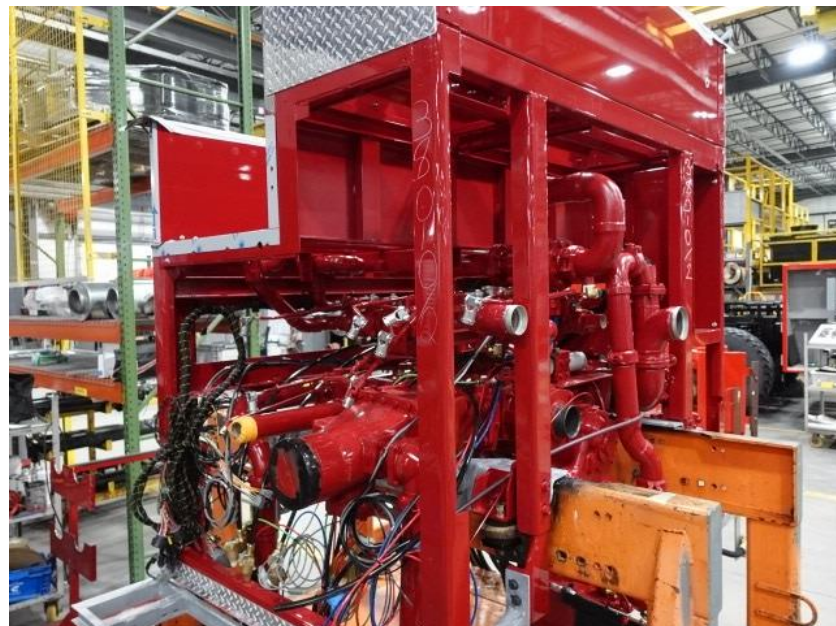
DSC00234



DSC00235



DSC00236



DSC00237



DSC00238



DSC00239



DSC00588



DSC00589



DSC00590



DSC00591



DSC00592



<https://allegiancefr.com>

POWERED BY
ALLEGIANCE
— TRUCKS® —



An Oshkosh Corporation Company