

In-Production Photo Report for Lowell Fire Department, MA Job# 40774

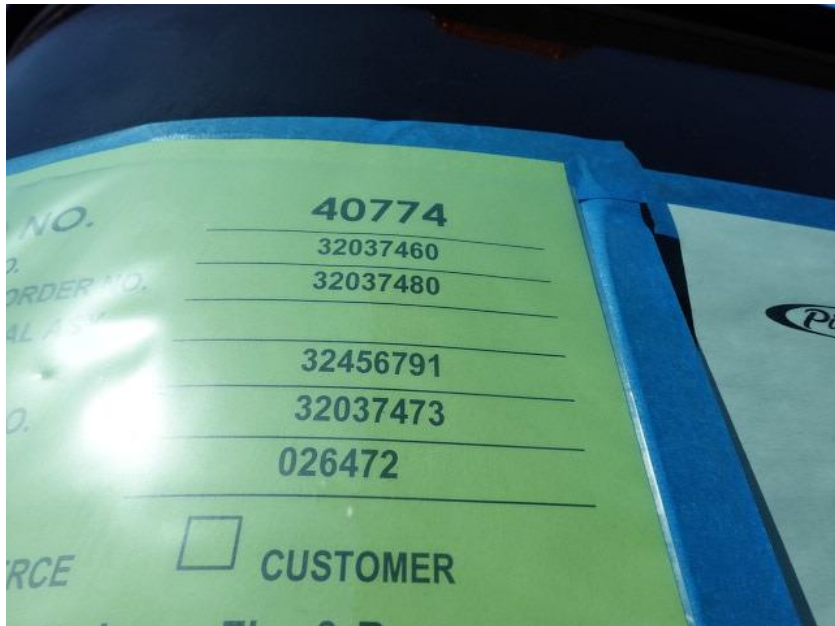
Status as of March 01, 2024

In this report your cab was staged, the frame build began, the transverse compartment began the paint process, the torque box continued initial assembly, the body completed paint, and the aerial device arrived and was staged. In the next report your cab may remain staged, the frame build may continue, the transverse may continue through paint, the torque box may continue initial assembly, the body may begin initial assembly, and the aerial device may remain staged.

For Valued Customers of



POWERED BY
ALLEGIANCE
TRUCKS®



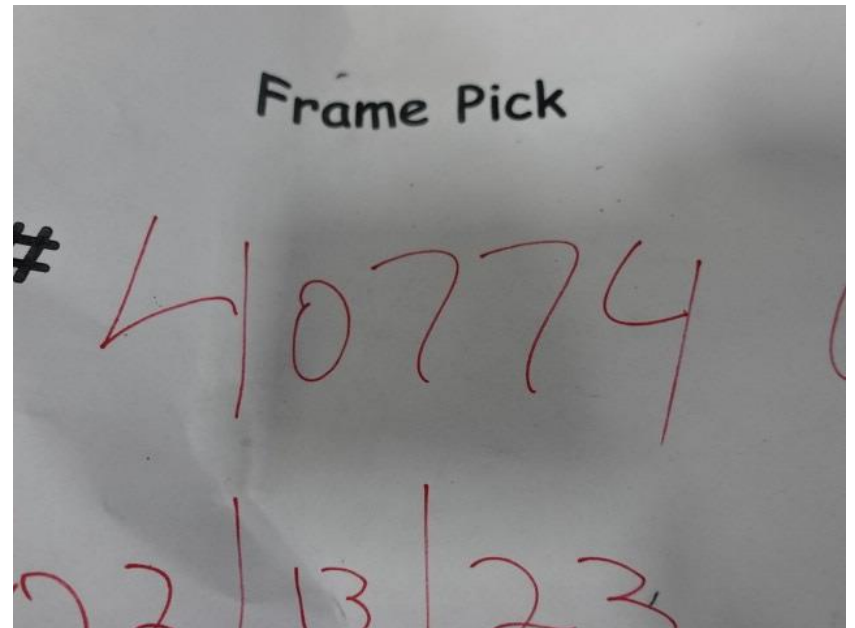
DSC00119



DSC00120



DSC00121



DSC00132



DSC00133



DSC00134



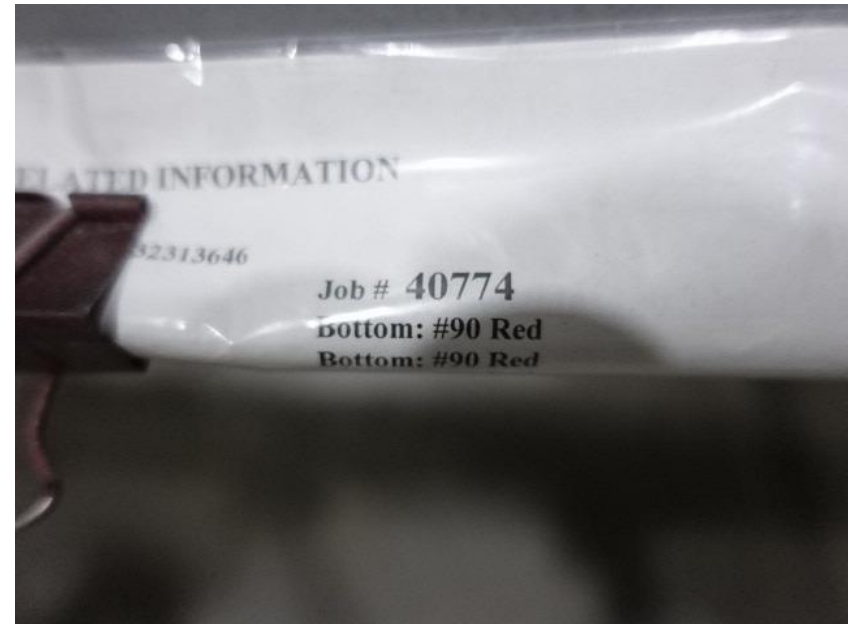
DSC00135



DSC00136



DSC00137



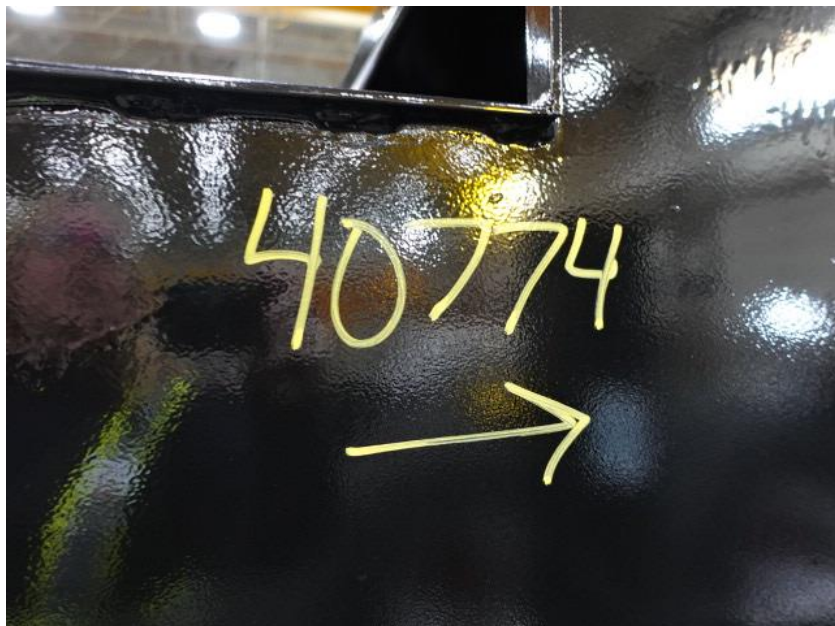
DSC00532



DSC00533



DSC00534



DSC03044



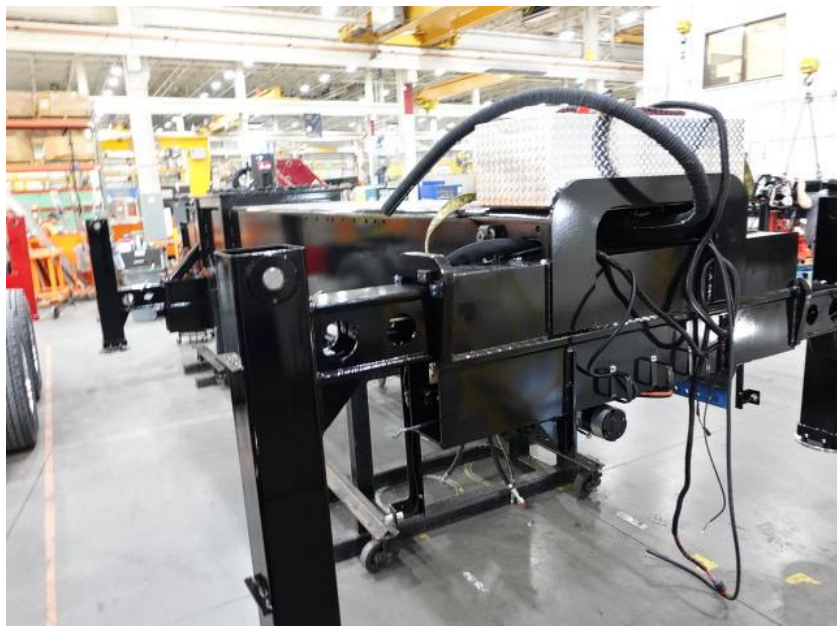
DSC03045



DSC03046



DSC03047



DSC03048



DSC00567



DSC00568



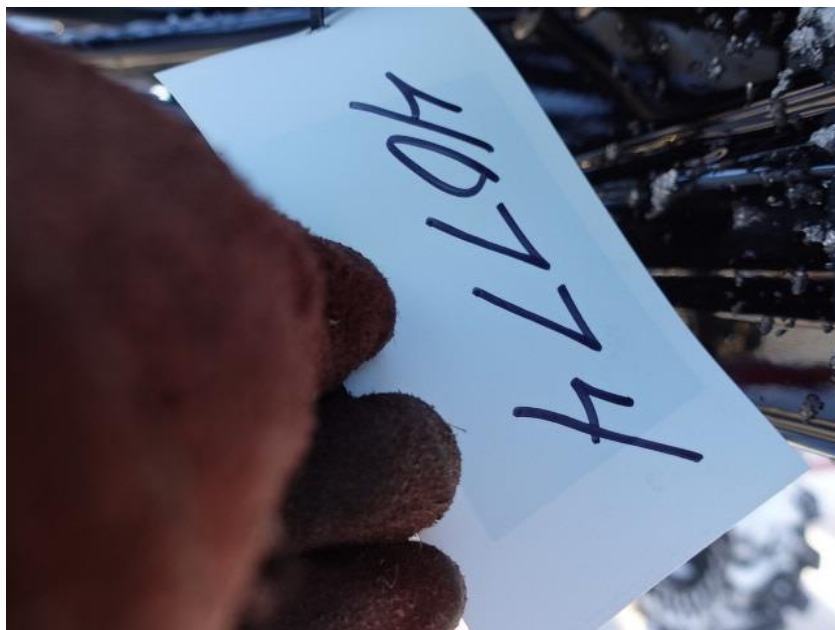
DSC00569



DSC00570



DSC00571



DSC00562



DSC00563



DSC00564



DSC00565



DSC00566



<https://allegiancefr.com>

POWERED BY
ALLEGIANCE
— TRUCKS® —



An Oshkosh Corporation Company