

In-Production Photo Report for South Portland Fire Department, ME Job# 38003

Status as of February 07, 2024

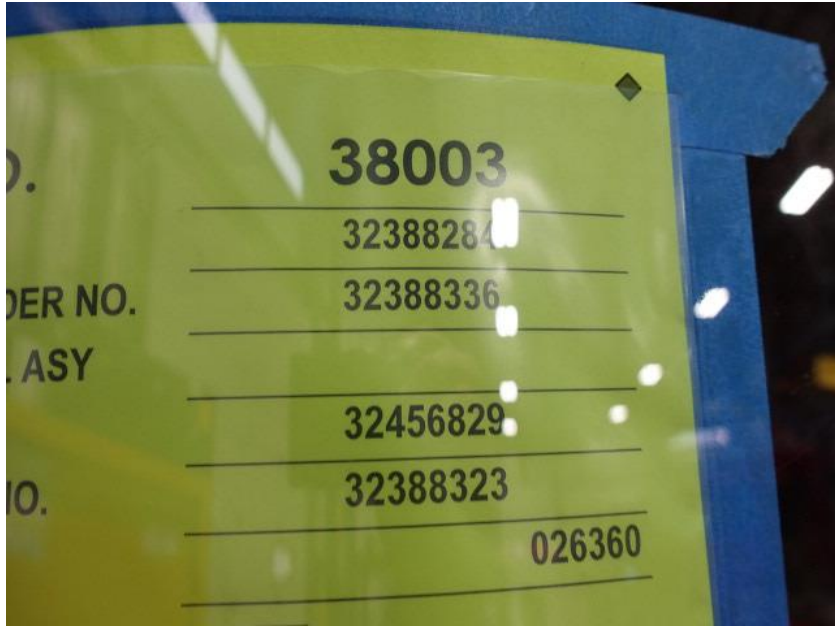
In this report your cab continued initial assembly, the frame build began, the pump house structure was painted, the torque box began initial assembly, the front body module was unavailable for photos, and the rear body module began the paint process. In the next report the cab may continue initial assembly, the frame build may continue, the pump house may begin initial assembly, the torque box may continue initial assembly, the front body module may be available, and rear body module may continue through paint.



For Valued Customers of



POWERED BY
ALLEGIANCE
TRUCKS®



DSC00027



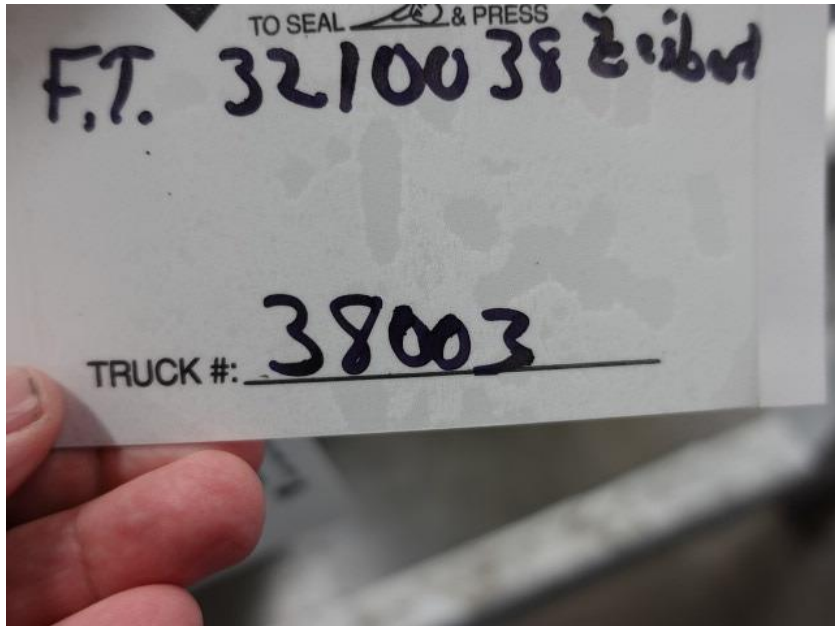
DSC00028



DSC00029



DSC00030



DSC00041



DSC00042



DSC00043



DSC00044



DSC00045



DSC00046



DSC03061



DSC03062



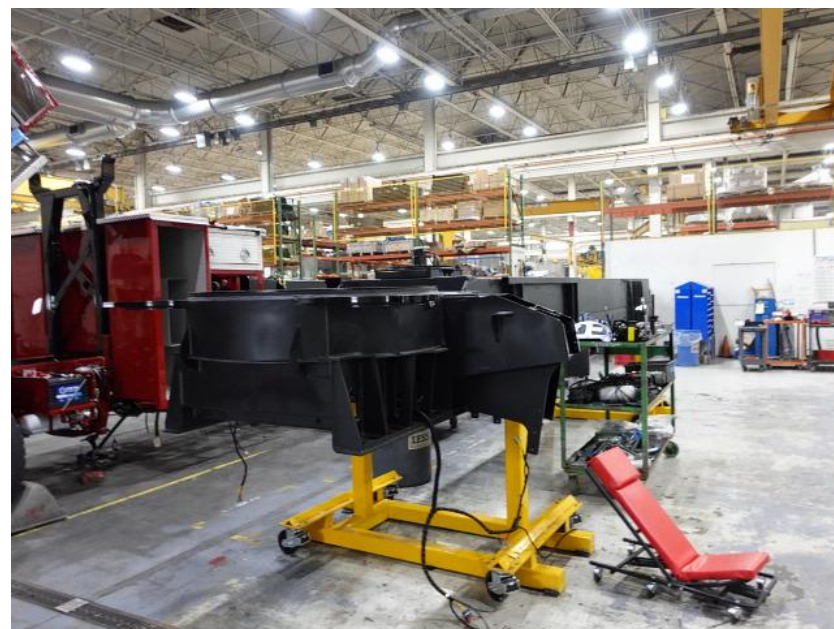
DSC03063



DSC03064



DSC03080



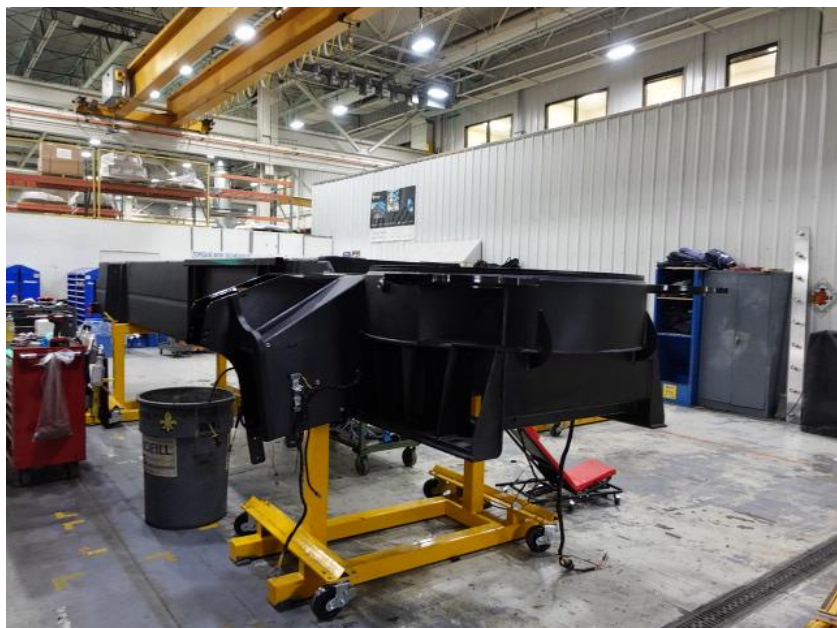
DSC03081



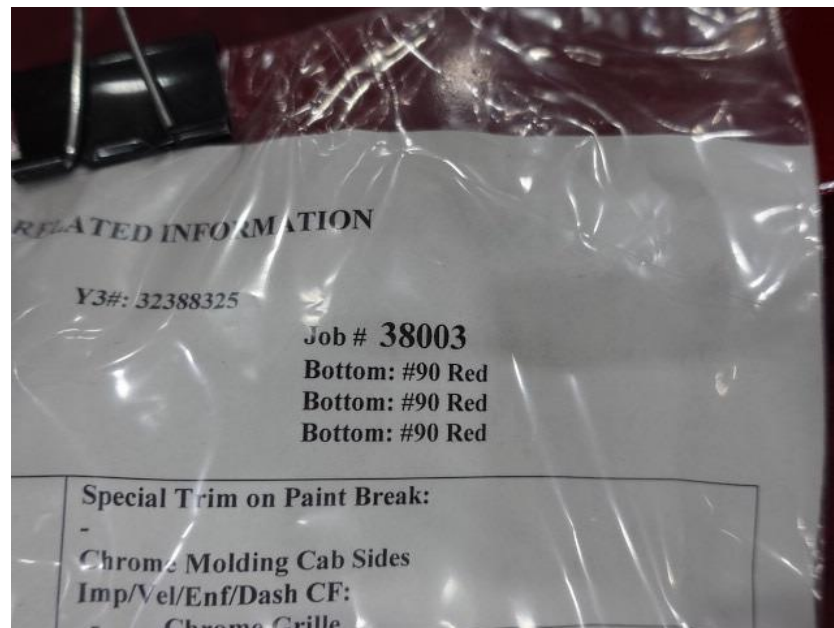
DSC03082



DSC03083



DSC03084



DSC01045



DSC01046



DSC01047



DSC01048



DSC01049



<https://allegiancefr.com>

POWERED BY
ALLEGIANCE
— TRUCKS® —



An Oshkosh Corporation Company