

In-Production Photo Report for South Portland Fire Department, ME Job# 38003

Status as of February 23, 2024

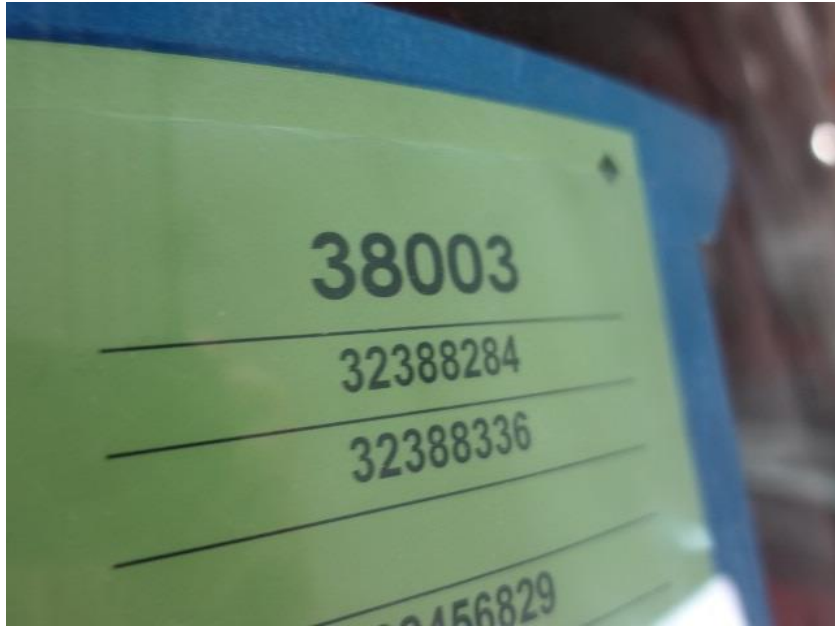
In this report your cab, pump house, and torque box were installed on the frame, the front body module completed paint, and the rear body module began initial assembly. In the next report the chassis may be staged to continue assembly, the front body module may begin initial assembly, and the rear body module may continue initial assembly.



For Valued Customers of



POWERED BY
ALLEGIANCE
TRUCKS®



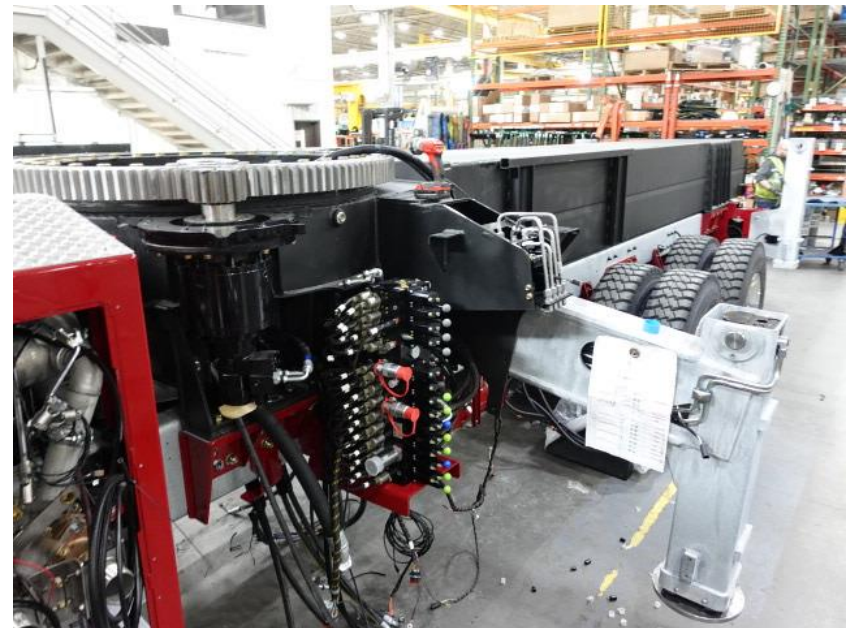
DSC00078



DSC00079



DSC00080



DSC00081



DSC00082



DSC00083



DSC00084



DSC00085



DSC00086



DSC00087



DSC01404



DSC01405



DSC01406



DSC03729



DSC03730



DSC03731



DSC03732



DSC03733



DSC03734



<https://allegiancefr.com>

POWERED BY
ALLEGIANCE
— T R U C K S —



An Oshkosh Corporation Company