

In-Production Photo Report for South Portland Fire Department, ME Job# 38003

Status as of March 01, 2024

In this report the rear body module was merged with the chassis and assembly continued while the front body module began initial assembly. In the next report the front body module may be installed, and your apparatus may complete initial assembly followed by the start of final assembly .



For Valued Customers of



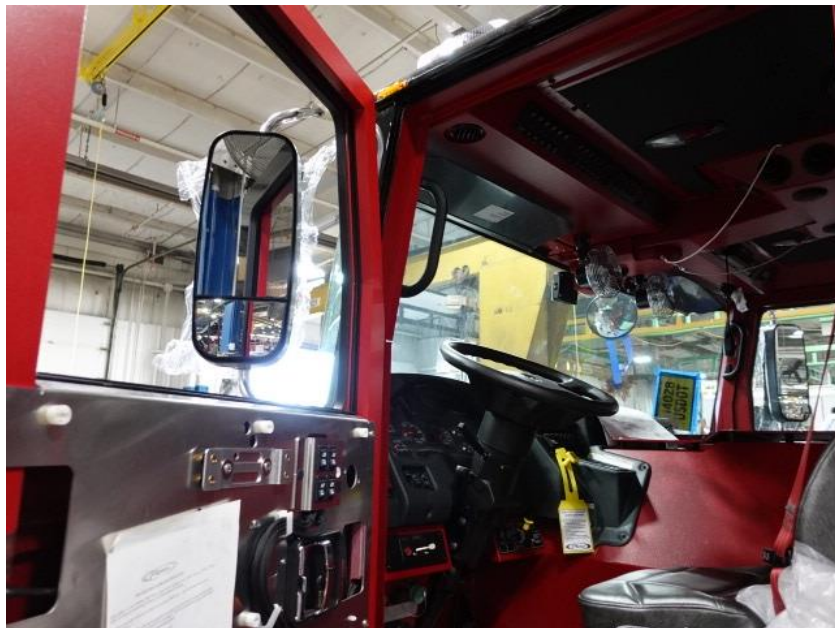
POWERED BY
ALLEGIANCE
TRUCKS®



DSC00325



DSC00326



DSC00327



DSC00328



DSC00329



DSC00330



DSC00331



DSC00332



DSC00333



DSC00334



DSC00335



DSC00336



DSC00337



DSC00338



DSC00339



DSC00340



DSC00341



DSC00342



DSC00343



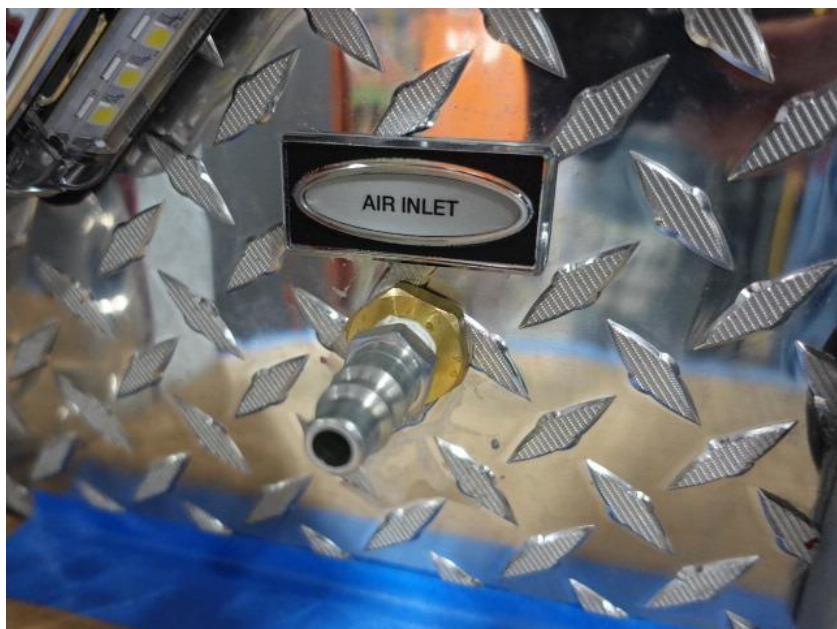
DSC00344



DSC00345



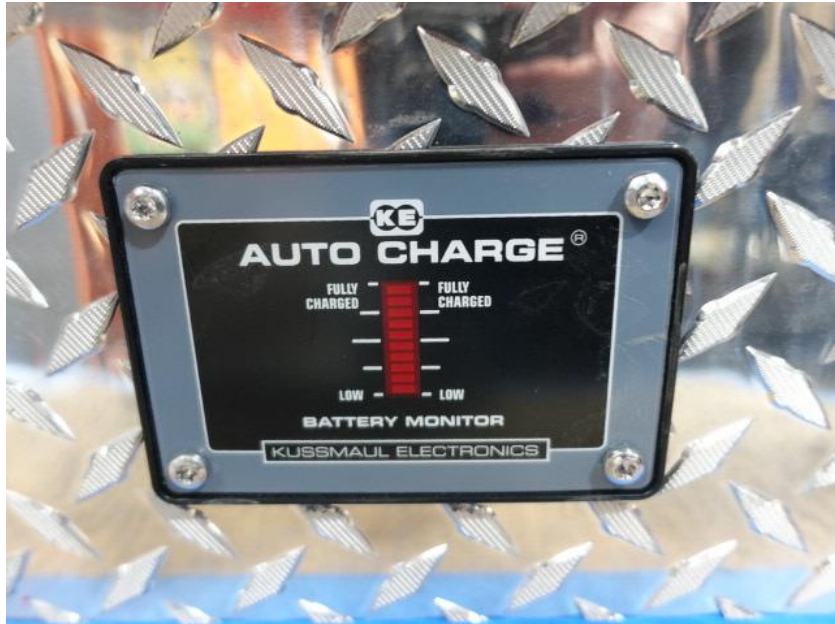
DSC00346



DSC00347



DSC00348



DSC00349



DSC00350



DSC00351



DSC00352



DSC00353



DSC00354



DSC00355



DSC00356



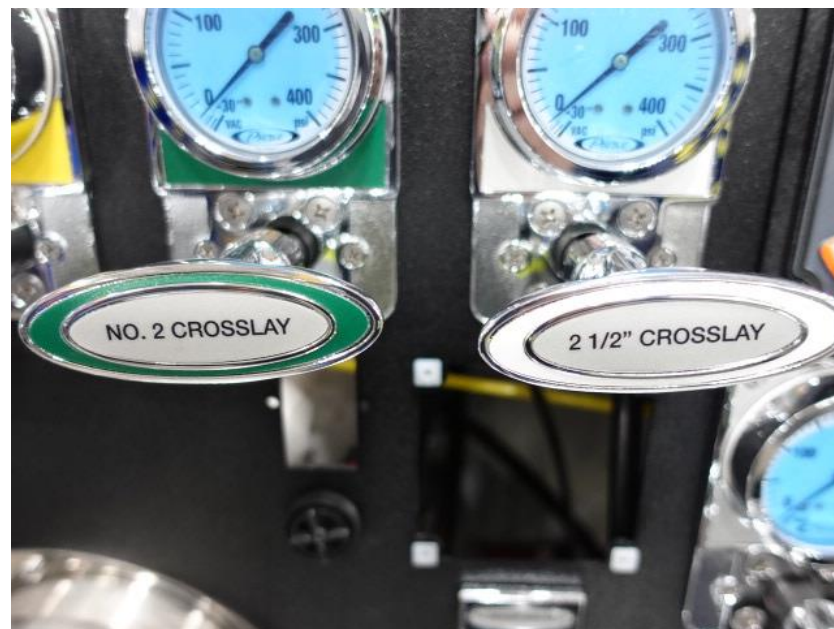
DSC00357



DSC00358



DSC00359



DSC00360



DSC00361



DSC00362



DSC00363



DSC00364



DSC00365



DSC00366



DSC00367



DSC00368



DSC00369



DSC00370



DSC00371



DSC00372



DSC00373



DSC00374



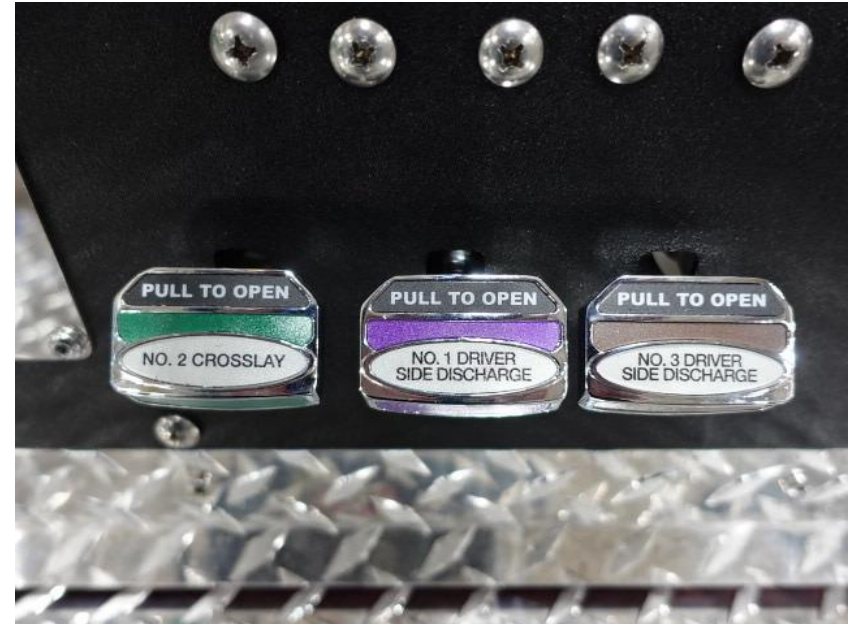
DSC00375



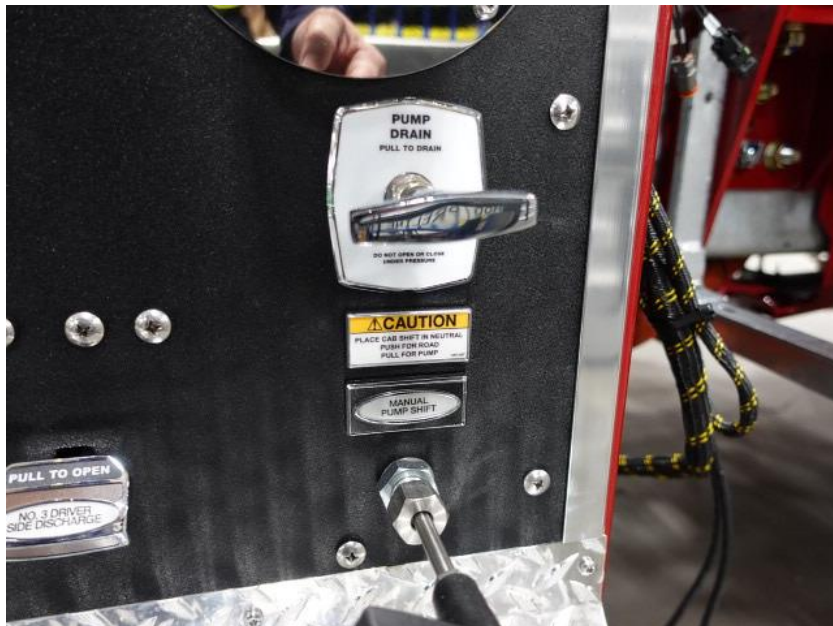
DSC00376



DSC00377



DSC00378



DSC00379



DSC00380



DSC00381



DSC00382



DSC00383



DSC00384



DSC00385



DSC00386



DSC00387



DSC00388



DSC00389



DSC00390



DSC00391



DSC00392



DSC00397



DSC00398



DSC00399



DSC00400



DSC00401



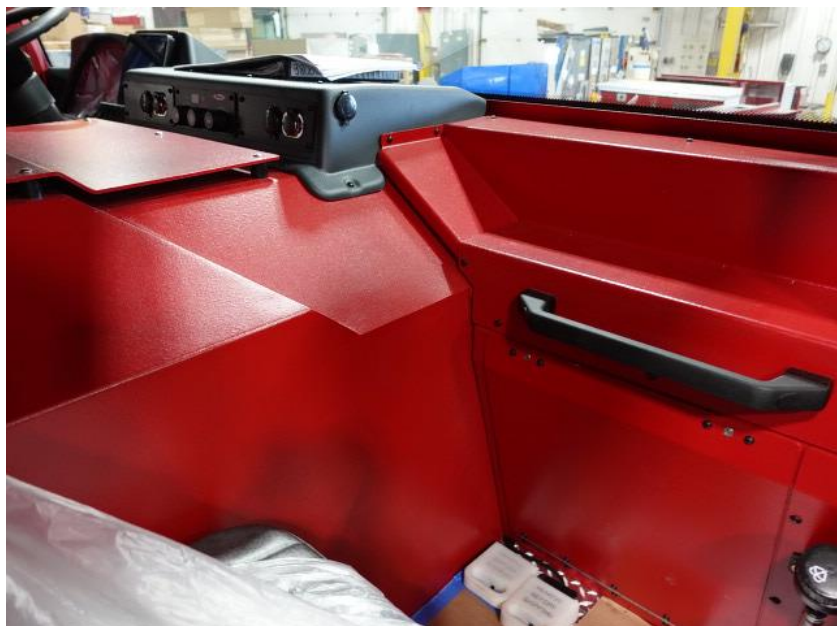
DSC00402



DSC00403



DSC00404



DSC00405



DSC00406



DSC00407



DSC00408



DSC00409



DSC00410



DSC00411



DSC00412



DSC00413



DSC00414



DSC00415



DSC00416



<https://allegiancefr.com>

POWERED BY
ALLEGIANCE
— TRUCKS® —



An Oshkosh Corporation Company