

# In-Production Photo Report for Brockton Fire Department, MA Job# 38748

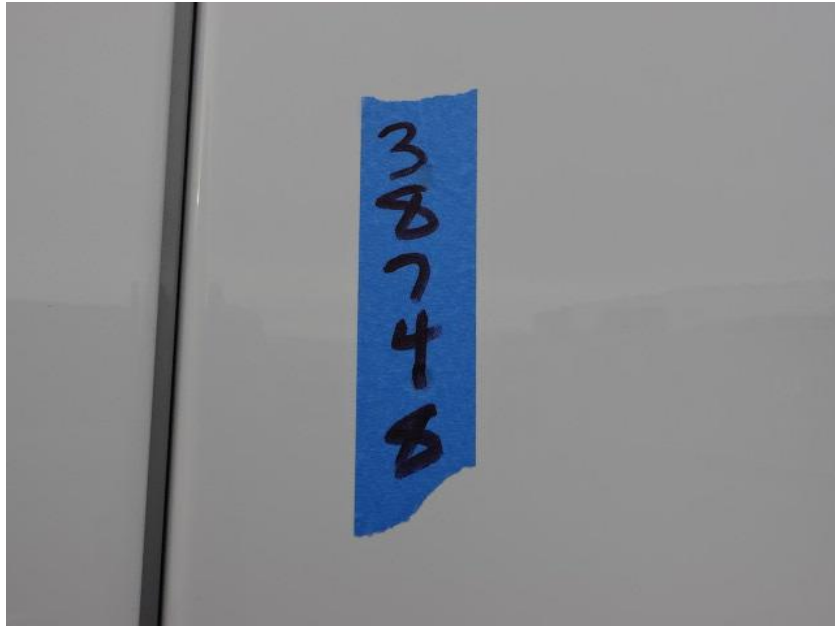
Status as of March 22, 2024

In this report the cab remained staged, the frame build began, the torque box began initial assembly, and the body completed paint and began initial assembly. In the next report the cab may remain staged, the frame build may continue, the torque box may continue initial assembly, and the body may continue initial assembly.



POWERED BY  
**ALLEGIANCE**  
TRUCKS®

*For Valued Customers of*



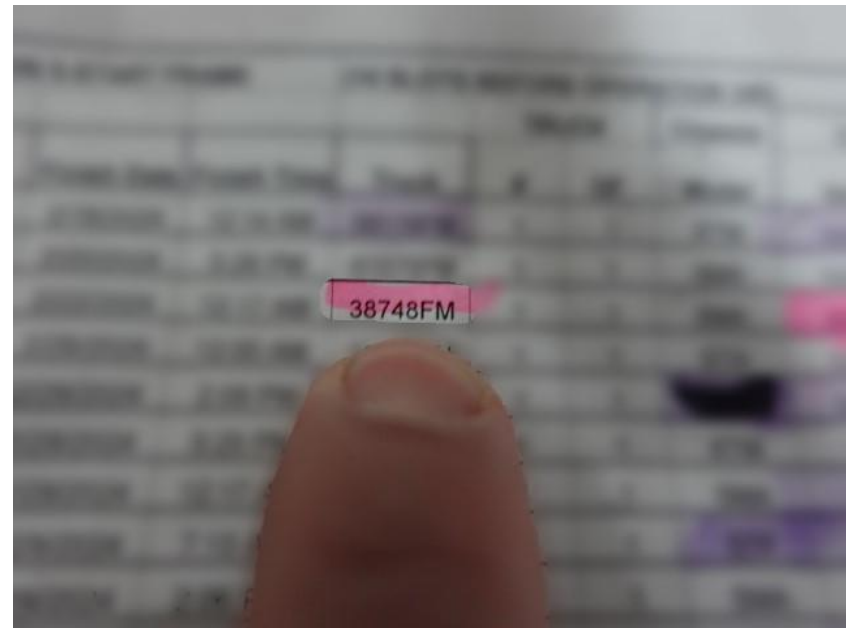
DSC00047



DSC00048



DSC00049



DSC00071



DSC00072



DSC00073



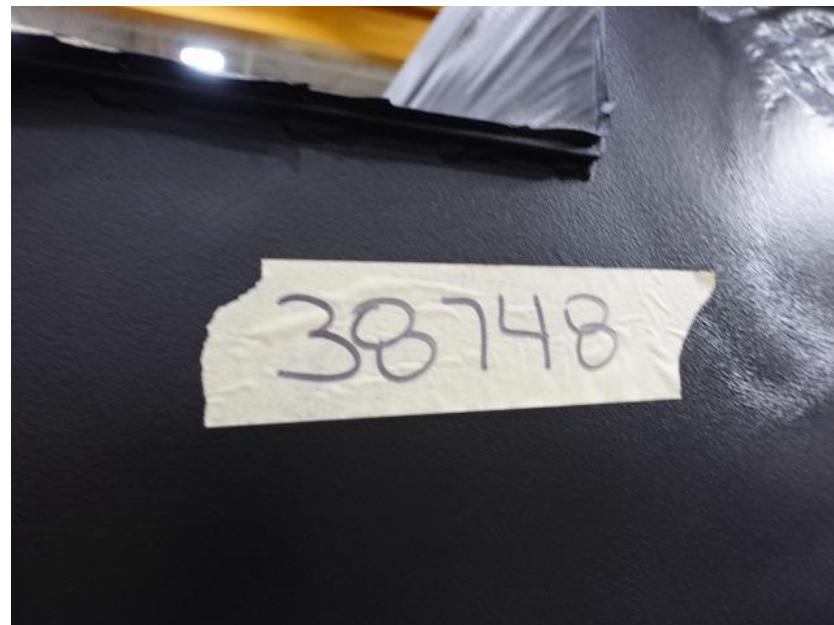
DSC00074



DSC00075



DSC00076



DSC03485



DSC03486



DSC03487



DSC03488



DSC03489



DSC03403



DSC03404



DSC03405



DSC03406



DSC03407



<https://allegiancefr.com>

POWERED BY  
**ALLEGIANCE**  
— TRUCKS® —



An Oshkosh Corporation Company