

# In-Production Photo Report for Belchertown Fire Department, MA Job# 38225

Status as of April 25, 2024

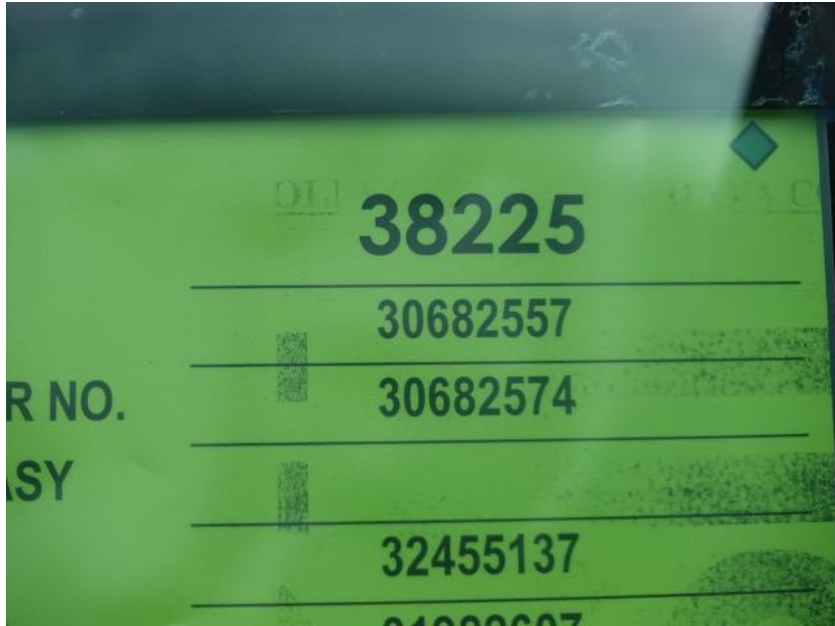
In this report your cab completed initial assembly, the pump house structure was fabricated, and the rear body module completed fabrication. In the next report your cab may be staged, and the pump house structure and rear body module may remain staged.



*For Valued Customers of*



POWERED BY  
**ALLEGIANCE**  
TRUCKS®



DSC00007



DSC00008



DSC00009



DSC00010



DSC00011



DSC03122



DSC03123



DSC03124



DSC03445



DSC03446



DSC03447



DSC03448



DSC03449



<https://allegiancefr.com>

POWERED BY  
**ALLEGIANCE**  
— TRUCKS® —



An Oshkosh Corporation Company