

# In-Production Photo Report for Belchertown Fire Department, MA Job# 38225

---

Status as of May 03, 2024

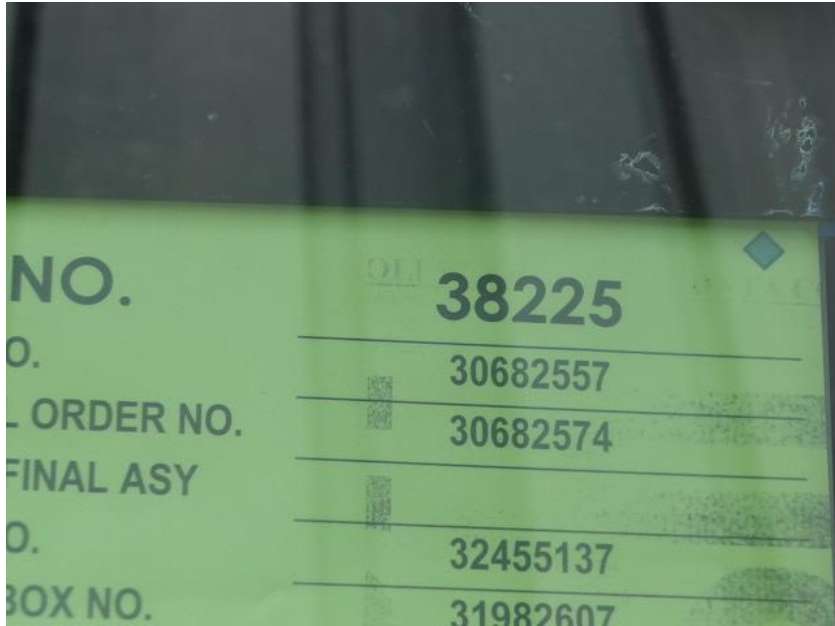
In this report your cab remained staged, the frame build began, and the pump house structure and rear body module were staged. In the next report your cab may remain staged, the frame build may continue, the pump house structure may be painted, and the rear body module may begin the paint process.



*For Valued Customers of*



POWERED BY  
**ALLEGIANCE**  
TRUCKS®



DSC03386



DSC03387



DSC03388



DSC03389



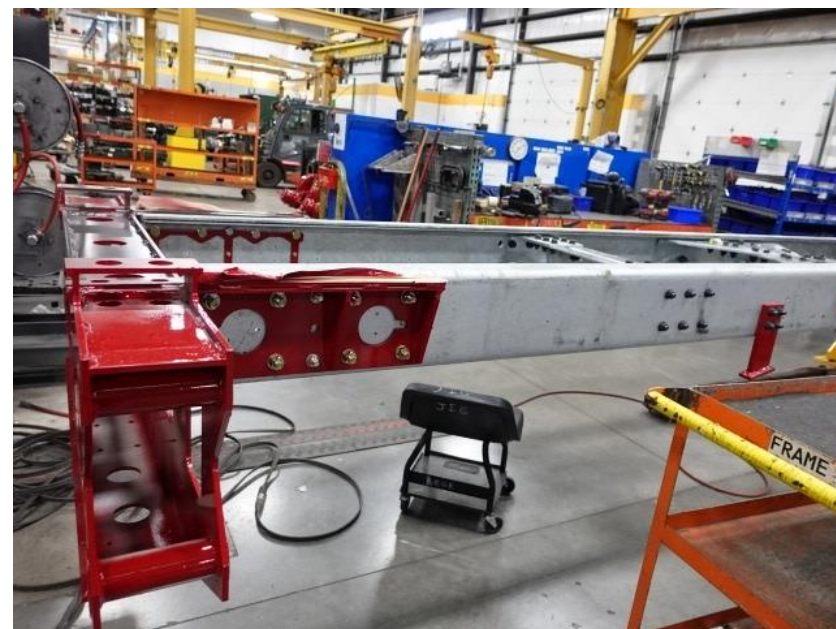
DSC03456



DSC03457



DSC03458



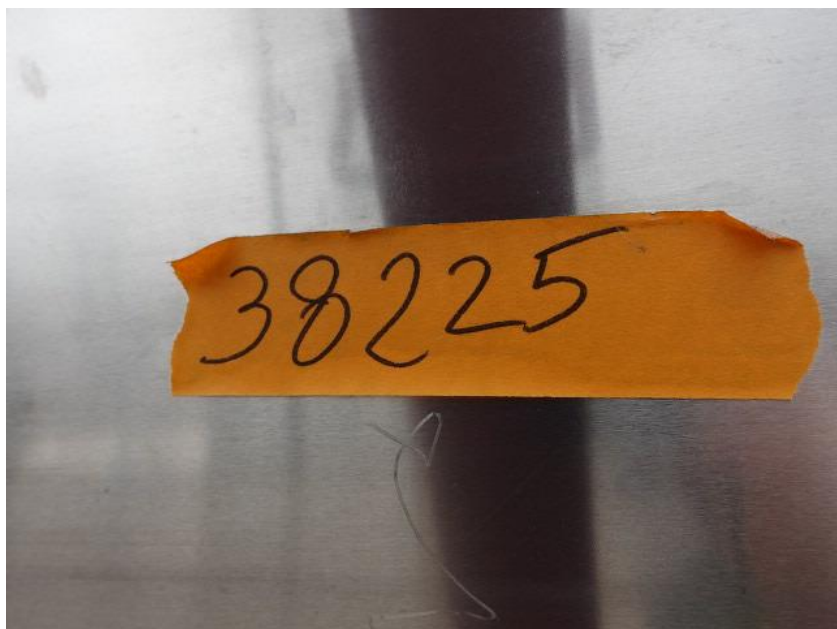
DSC03459



DSC03460



DSC03461



DSC03100



DSC03101



DSC03102



DSC03103



DSC03104



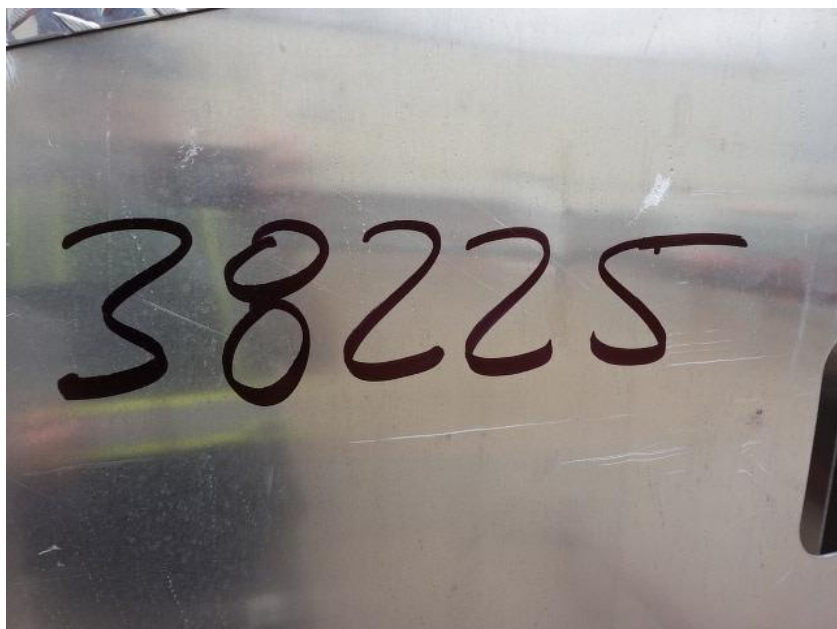
DSC00684



DSC00685



DSC00686



DSC00520



DSC00521



DSC00522



DSC00523



DSC00524



<https://allegiancefr.com>

POWERED BY  
**ALLEGIANCE**  
— T R U C K S —



An Oshkosh Corporation Company