

In-Production Photo Report for Brockton Fire Department, MA Job# 38749

Status as of April 12, 2024

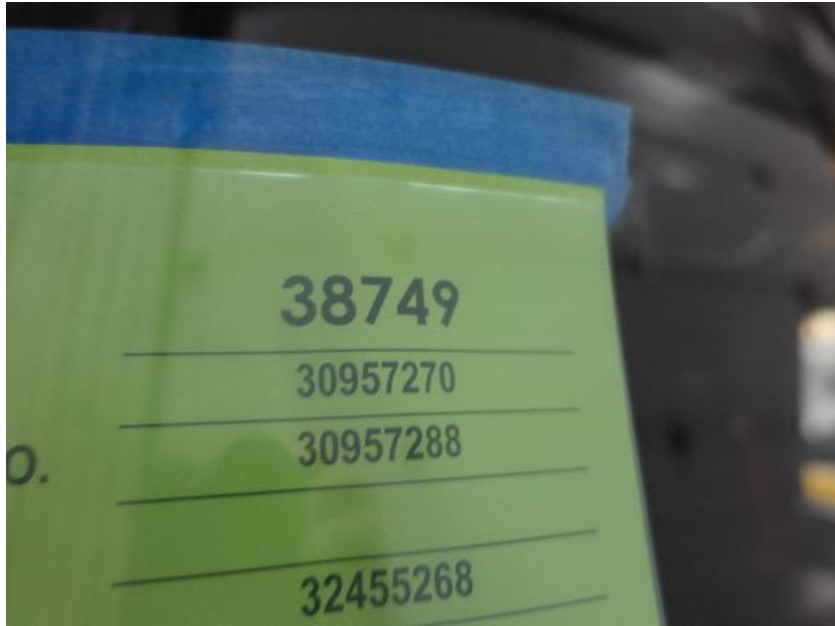
In this report the cab was installed on the frame, the transverse compartment remained staged, the torque box began initial assembly, the front body module remained staged, and the rear body module began initial assembly. In the next report the torque box may be installed on the chassis, the transverse compartment may remain staged, the front body module may remain staged, and the rear body module may continue initial assembly.



For Valued Customers of



POWERED BY
ALLEGIANCE
TRUCKS®



DSC00161



DSC00162



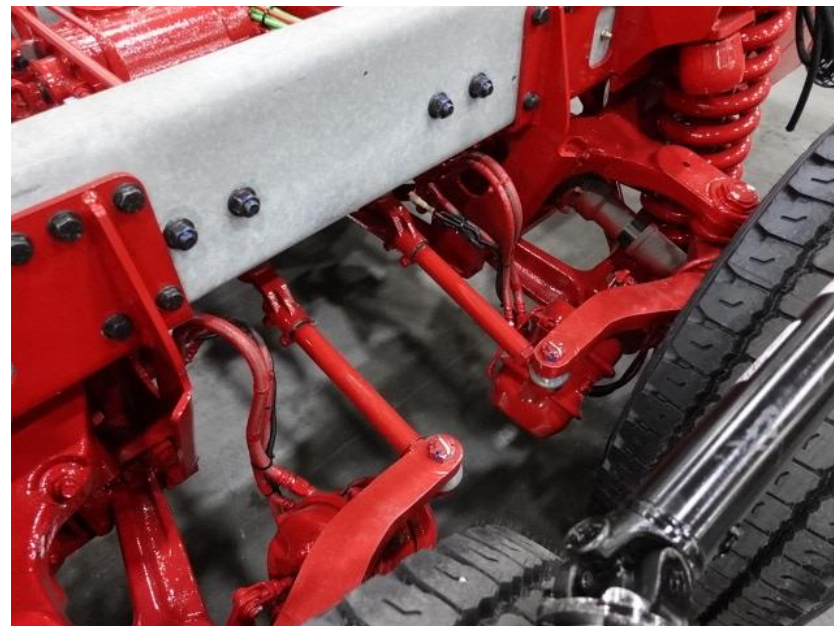
DSC00163



DSC00164



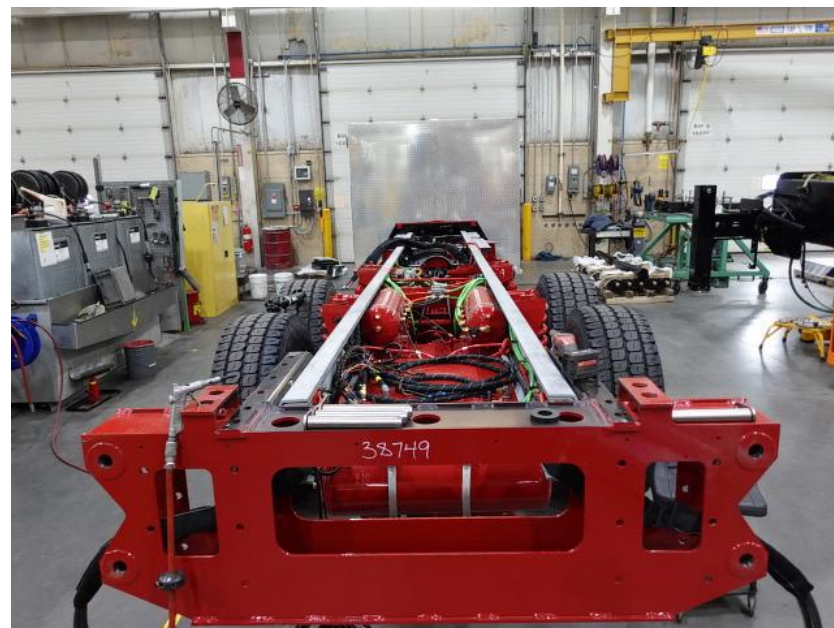
DSC00165



DSC00166



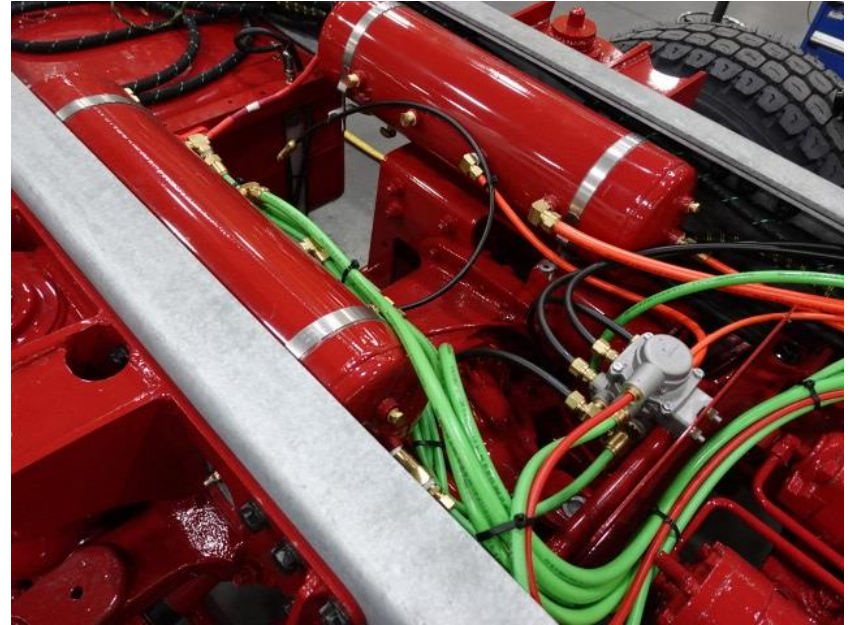
DSC00167



DSC00168



DSC00169



DSC00170



DSC00171



DSC00172



DSC00173



DSC00174



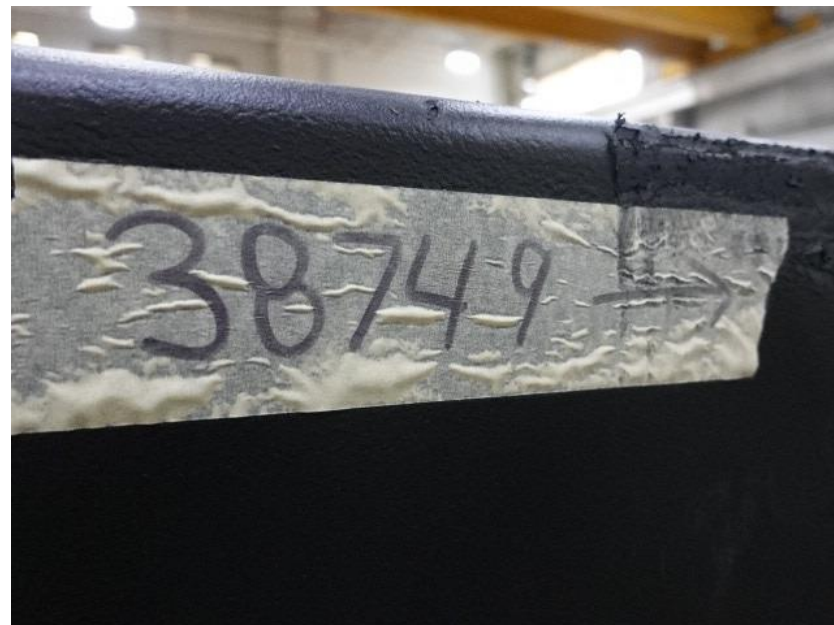
DSC03286



DSC03287



DSC03288



DSC00175



DSC00176



DSC00177



DSC00178



DSC00179



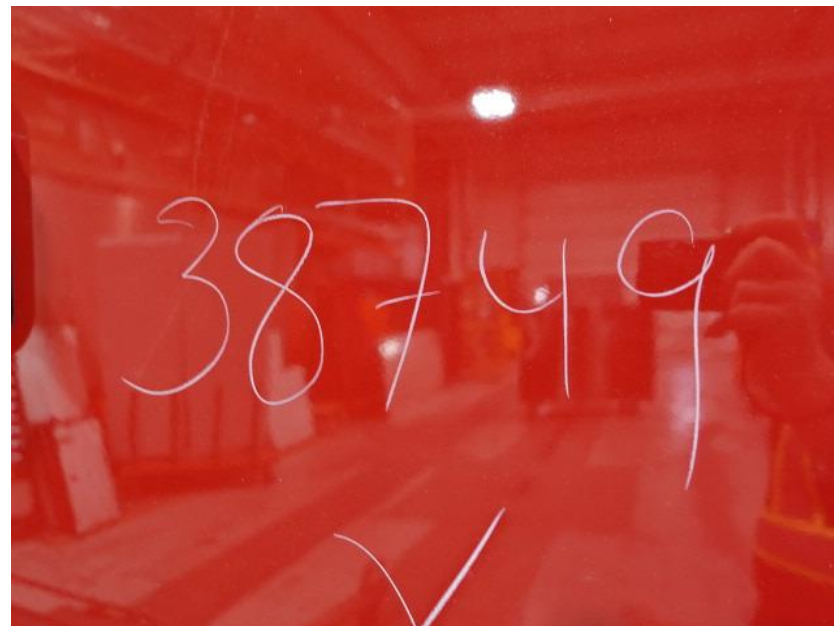
DSC03283



DSC03284



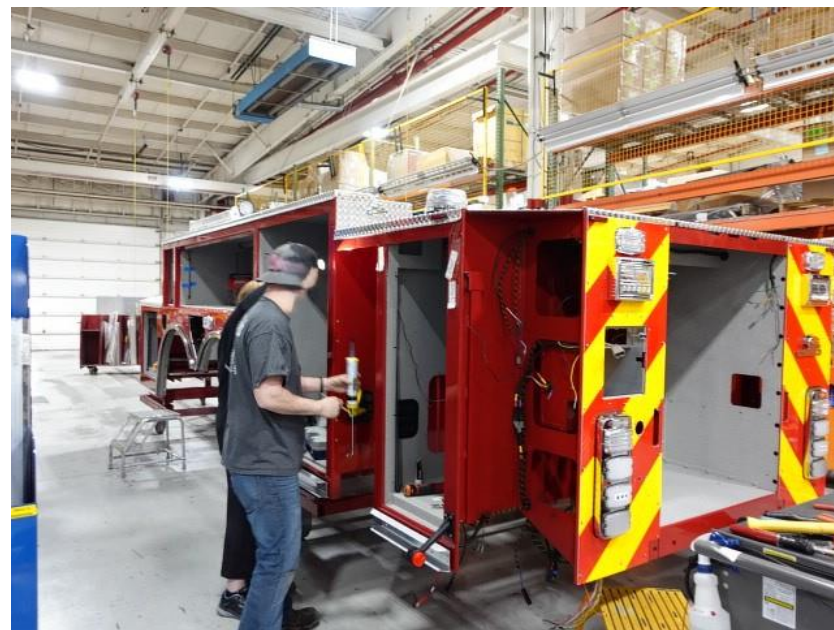
DSC03285



DSC03254



DSC03255



DSC03256



DSC03257



DSC03258



DSC03259



DSC03260



<https://allegiancefr.com>

POWERED BY
ALLEGIANCE
— T R U C K S —



An Oshkosh Corporation Company