

In-Production Photo Report for Brockton Fire Department, MA Job# 38749

Status as of April 19, 2024

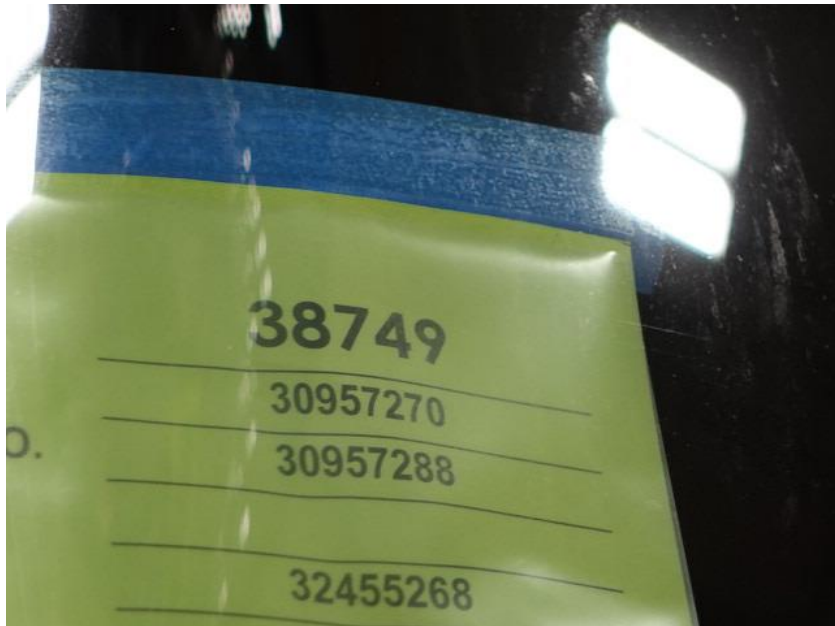
In this report the torque box, transverse compartment, and rear body module were merged with the chassis while the front body module began initial assembly. In the next report the front body module may be installed while your apparatus may continue initial assembly.



For Valued Customers of



POWERED BY
ALLEGIANCE
TRUCKS®



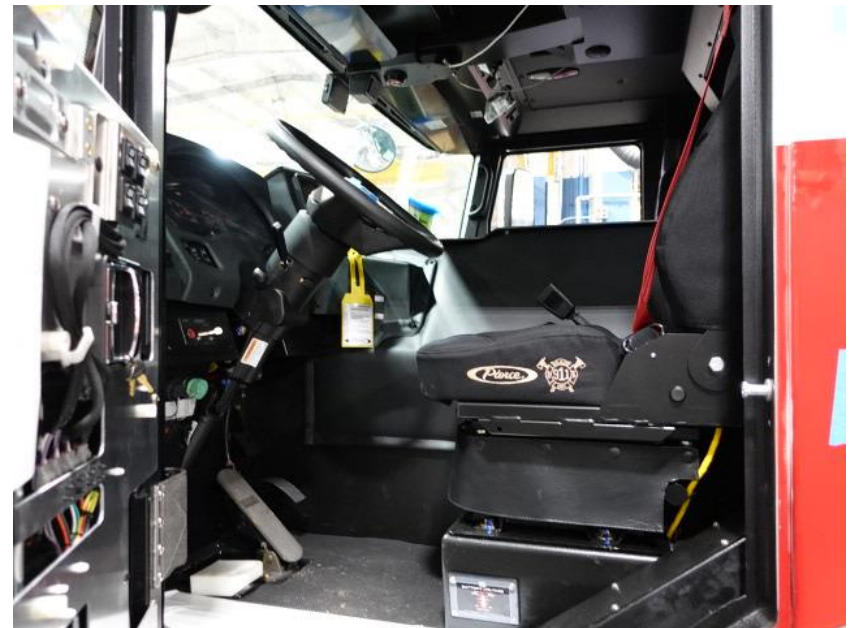
DSC03350



DSC03351



DSC03352



DSC03353



DSC03354



DSC03355



DSC03356



DSC03357



DSC03358



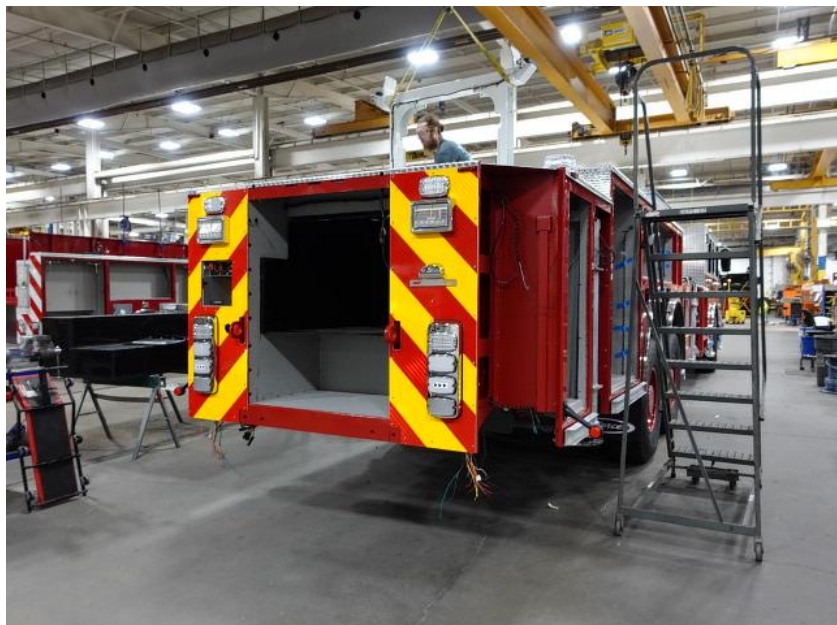
DSC03359



DSC03360



DSC03361



DSC03362



DSC03363



DSC03364



DSC03365



DSC03366



DSC03367



DSC03368



DSC03369



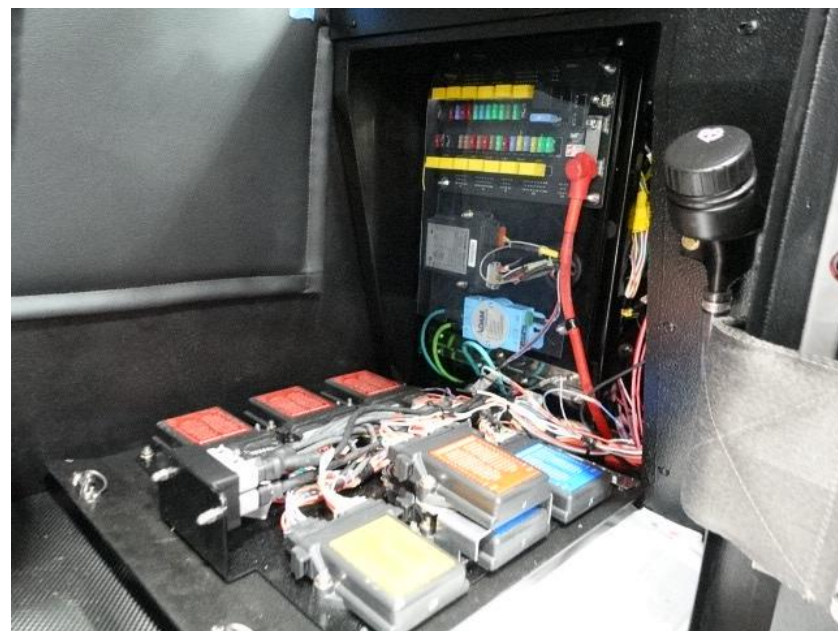
DSC03370



DSC03371



DSC03372



DSC03373



DSC03374



DSC03375



DSC03376



DSC03377



DSC03164



DSC03165



DSC03166



<https://allegiancefr.com>

POWERED BY
ALLEGIANCE
— T R U C K S —



An Oshkosh Corporation Company