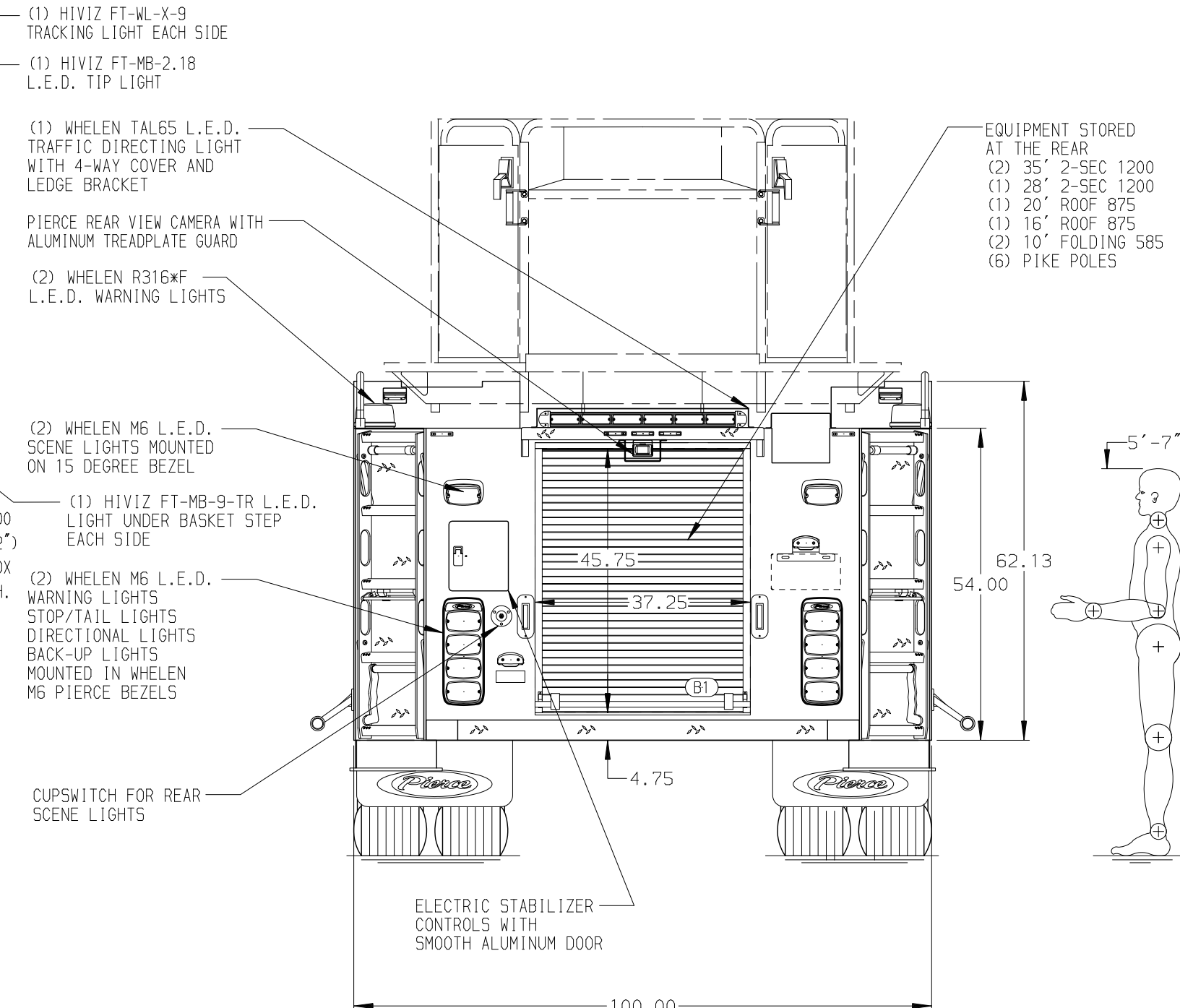
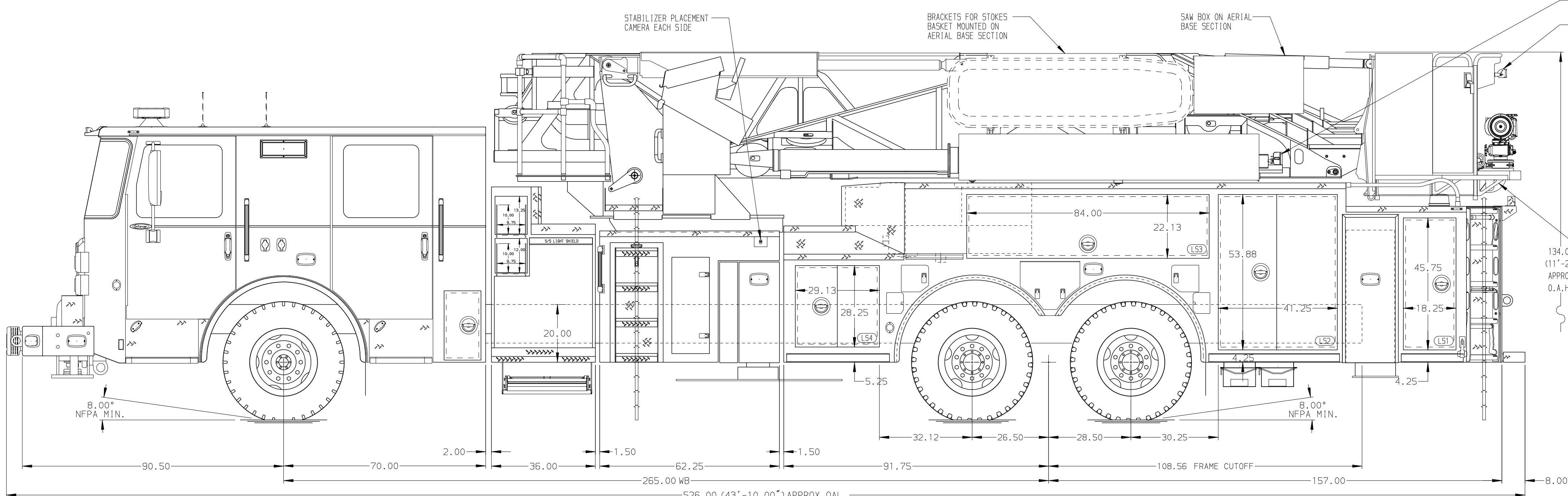


BODY 100' Ascendant Aerial Tower Alum Body COMPT, LEFT SIDE Full Height Lap Doors COMPT, RIGHT SIDE Full Height Lap Doors	WATER TANK 300 Gallon Poly Water Tank Foam System Foam System Not Required Foam Cell Foam Cell Not Required
---	---



CHASSIS Enforcer Chassis 500 HP Cummins X12 Engine	CAB 7000 Enforcer Cab BUMPER 21" Painted Aluminum	AXLE, FRONT, CUSTOM 21,500 Lb Dana Axle AXLE, REAR 54,000 Lb Meritor Axle	TRANSMISSION Allison 6th Gen, 4000 EV5 P	PUMPHOUSE 36" Control Zone Side Mount PUMP 1500 GPM DSD Hole Single Stage	CROSSLAYS, 1.50" (2) 1.50", With Trays, 200' CROSSLAYS, 2.50" 2.50" Crosslay Not Required	SPEEDLAYS Speedlays Not Required GENERATOR Generator Not Required	-	-
---	--	--	--	--	--	--	---	---

		JOB NO.	38808
		SCALE	DATE

NOTE
DIMENSIONS SHOWN ARE APPROXIMATE AND ARE SUBJECT TO MINOR DEVIATIONS AS MAY OCCUR OR BE NECESSARY IN CONSTRUCTION. MINOR DETAILS NOT SHOWN.

- TWO SHORELINE RECEPTACLES WITH KUSSMAUL SUPER AUTO-EJECT LOCATED ON DRIVER SIDE OF THE CAB
- RUNG LIGHTING ON AERIAL LADDER
- VANNER LIFELINE INVERTER/BATTERY CHARGER LOCATED PER ORDER
- THREE ADJUSTABLE SHELVES LOCATED PER ORDER
- NON-RAISED AERIAL PEDESTAL
- 3-in-1 LYFECOMBO BRACKETS AT AERIAL BASKET
- FOUR FLOOR MOUNTED SLIDE-OUT TRAYS PER ORDER
- ONE CETECH (3) DRAINER ASSEMBLY PER ORDER
- ONE SWING-OUT TOOLBOARD PER ORDER
- TEN 120V RECEPTACLES PER ORDER
- RUNG LIGHTING ON AERIAL LADDER
- DC POWER TO AERIAL TIP
- TWO SLIDE-OUT TOOLBOARDS PER ORDER
- PEG BOARD ON BACK WALL PER ORDER

MAXIMUM O.A.H. 143.00

CHASSIS DATA	TITLE	100' ASCENDANT AERIAL TOWER AND BODY ASSEMBLY
MAKE	FOR	MERRIMACK FIRE DEPARTMENT NH
MODEL		MERRIMACK, NH
REV	DATE	DWG NO.
110CT23	LWE JLL	38808AD
060CT23	LWE JLL	

DRAWN BY	LWE	31JULY23
CHECKED BY	NAK	03AUG23
SHEET SIZE	D	SHEET NO.
		1 OF 1