

In-Production Photo Report for Merrimack Fire Department, NH Job# 38808

Status as of April 19, 2024

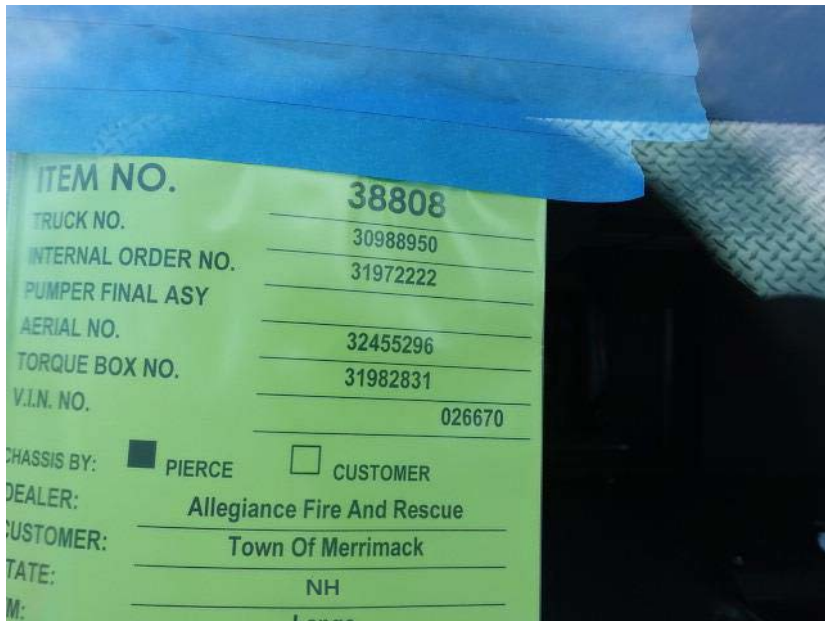
In this report your cab completed initial assembly, the pump house began initial assembly, the torque box and front body module remained staged, and the rear body module was staged to begin the paint process. In the next report your cab may remain staged, the pump house may continue initial assembly, the torque box may remain staged, the front body module may remain staged, and the rear body module may continue through paint.



For Valued Customers of



POWERED BY
ALLEGIANCE
TRUCKS®



DSC00310



DSC00311



DSC00312



DSC00097



DSC00098



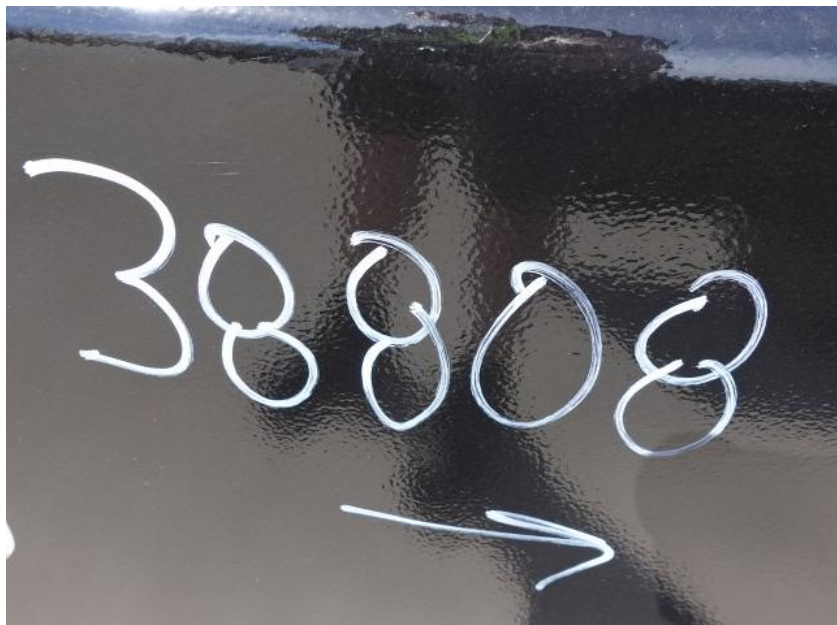
DSC00099



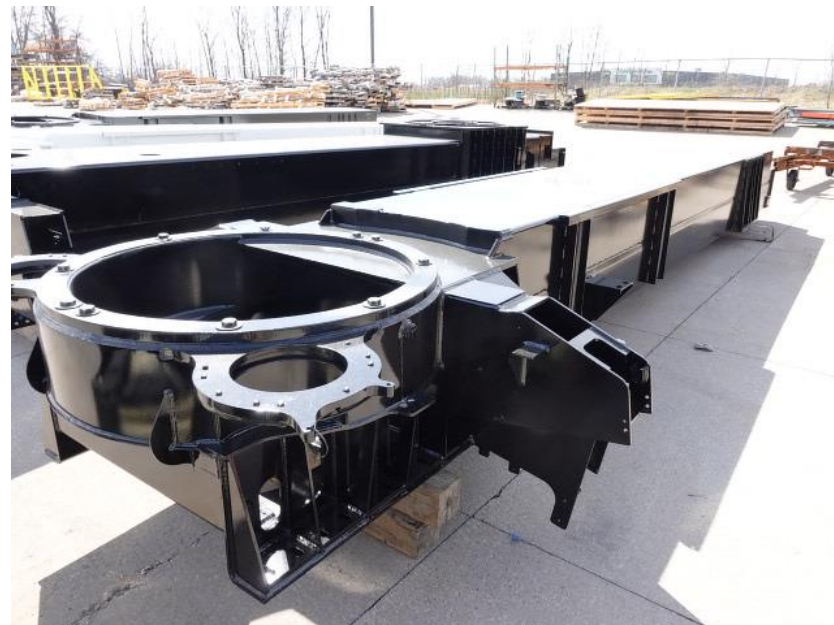
DSC00100



DSC00101



DSC00121



DSC00122



DSC00123



DSC00124



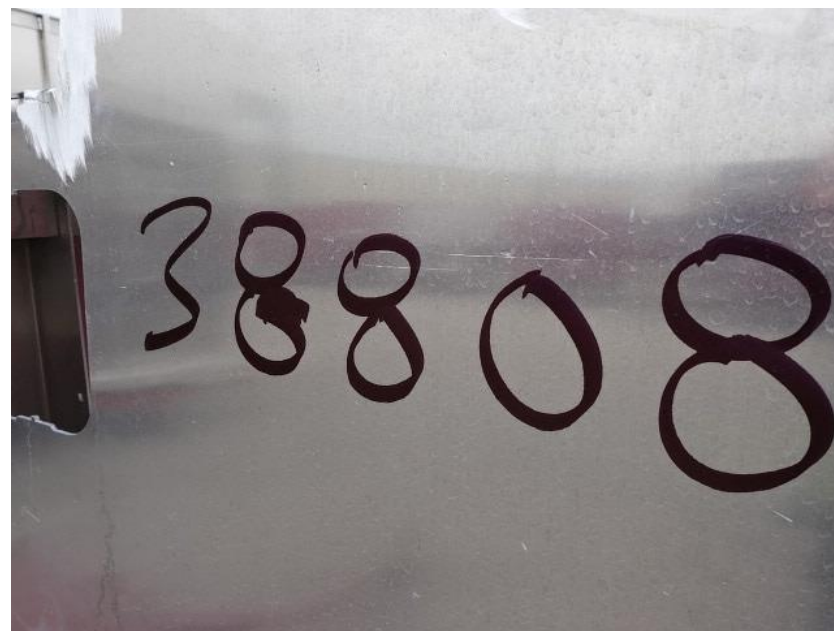
DSC00125



DSC00846



DSC00847



DSC00787



DSC00788



DSC00789



DSC00790



DSC00791



<https://allegiancefr.com>

POWERED BY
ALLEGIANCE
— T R U C K S —



An Oshkosh Corporation Company