

In-Production Photo Report for Plaistow Fire Department, NH Job# 38805

Status as of April 25, 2024

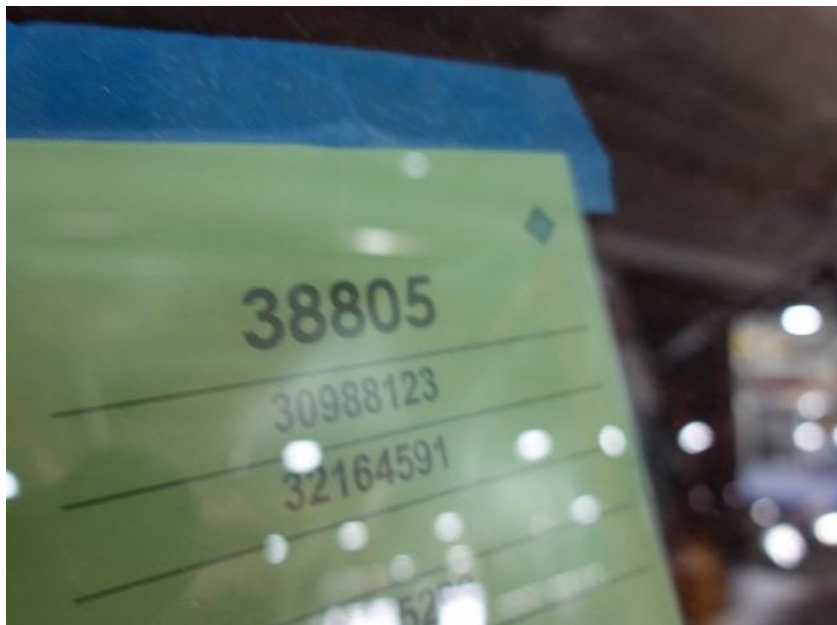
In this report the rear body module completed initial assembly and was merged with the chassis while the front body module began initial assembly. In the next report the front body module may remain staged while your apparatus may continue initial assembly.



For Valued Customers of



POWERED BY
ALLEGIANCE
TRUCKS®



DSC00337



DSC00338



DSC00339



DSC00340



DSC00341



DSC00342



DSC00343



DSC00344



DSC00345



DSC00346



DSC00347



DSC00348



DSC03484



DSC03485



DSC03486



<https://allegiancefr.com>

POWERED BY
ALLEGIANCE
— T R U C K S —



An Oshkosh Corporation Company