

In-Production Photo Report for Plaistow Fire Department, NH Job# 38805

Status as of April 19, 2024

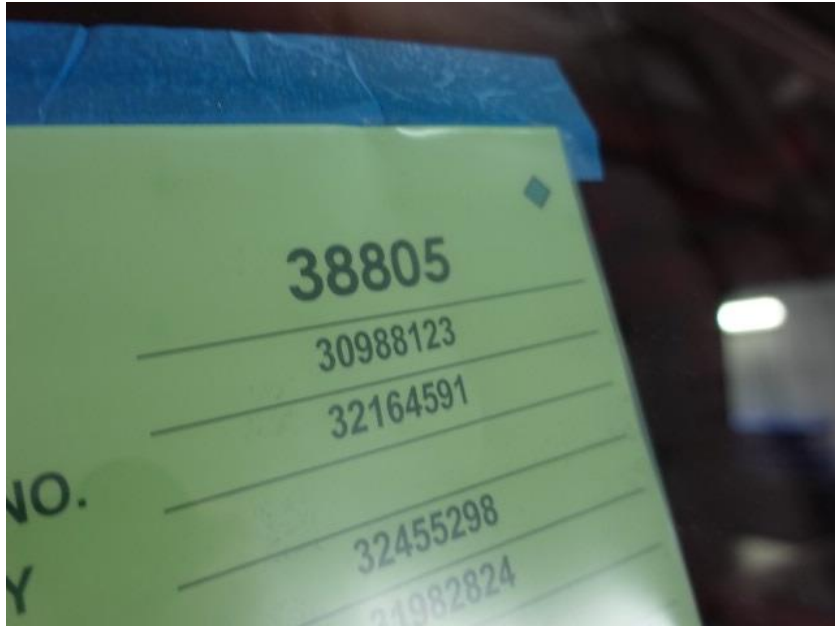
In this report the torque box completed initial assembly and was being installed on the chassis, the front body module remained staged, and the rear body module completed paint and began initial assembly. In the next report your chassis may be staged to continue assembly, the front body module may remain staged, and the rear body module may continue initial assembly.



For Valued Customers of



POWERED BY
ALLEGIANCE
TRUCKS®



DSC00136



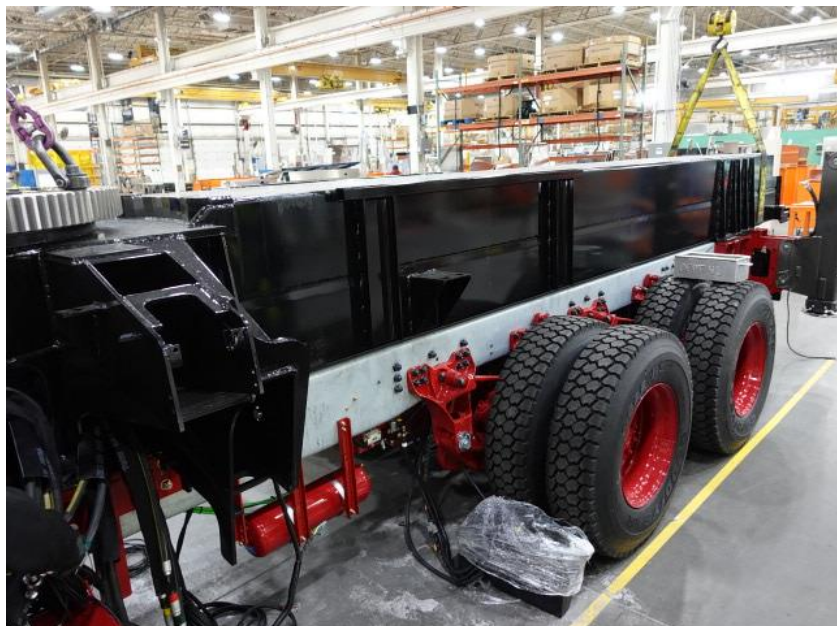
DSC00137



DSC00138



DSC00139



DSC00140



DSC00141



DSC00142



DSC00143



DSC00144



DSC00145



DSC00146



DSC00848



DSC00849



DSC00850



DSC03262



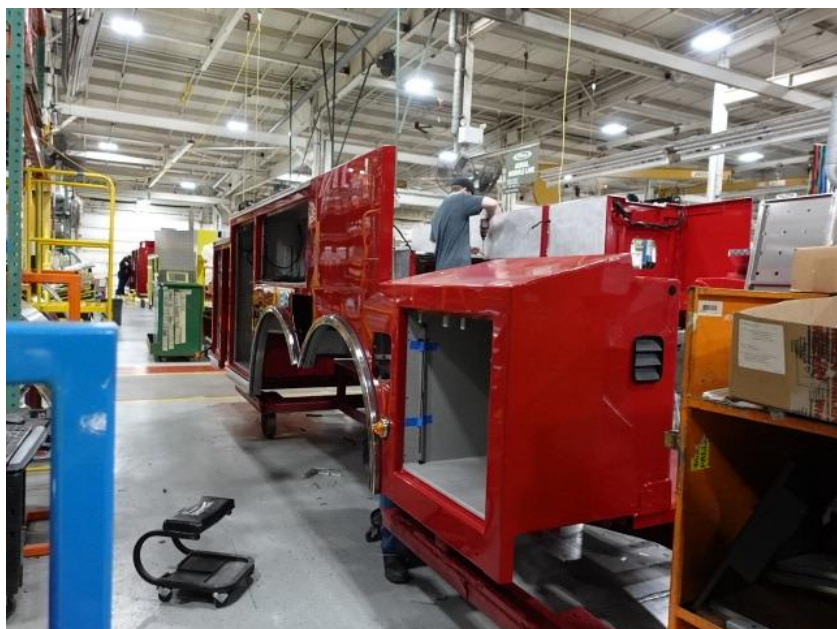
DSC03263



DSC03264



DSC03265



DSC03266



<https://allegiancefr.com>

POWERED BY
ALLEGIANCE
— T R U C K S —



An Oshkosh Corporation Company