

In-Production Photo Report for Plymouth Fire Department, NH Job# 38693

Status as of May 03, 2024

In this report your cab completed initial assembly, the frame build began, the pump house completed initial assembly, and the body completed the paint process. In the next report your cab may remain staged, the frame build may continue, the pump house may remain staged, and the body may begin initial assembly.



For Valued Customers of



POWERED BY
ALLEGIANCE
TRUCKS®



DSC03397



DSC03398



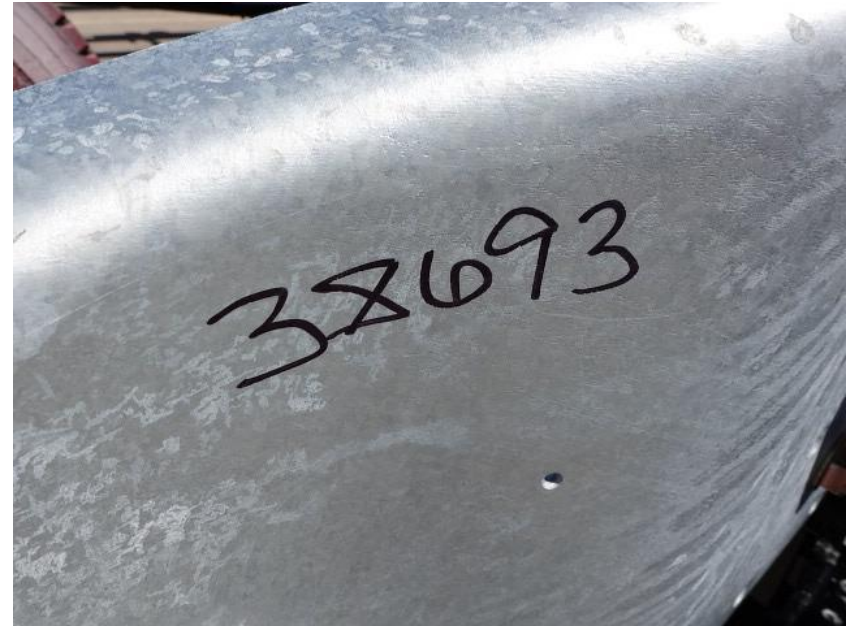
DSC03399



DSC03400



DSC03401



DSC03449



DSC03450



DSC03451



DSC03452



DSC03453



DSC03454



DSC03455



DSC03540



DSC03541



DSC03542



DSC00582



DSC00583



DSC00584



DSC00585



DSC00586



<https://allegiancefr.com>

POWERED BY
ALLEGIANCE
— TRUCKS® —



An Oshkosh Corporation Company