

# In-Production Photo Report for South Portland Fire Department, ME Job# 38003

---

Status as of April 12, 2024

In this report your apparatus completed testing and released to quality and graphics where any remaining content will be applied. Once finished it will be made ready for your customer acceptance inspection. This is your last scheduled report.



*For Valued Customers of*



POWERED BY  
**ALLEGIANCE**  
TRUCKS®



DSC00501



DSC00502



DSC00503



DSC00504



DSC00505



DSC00506



DSC00507

**Pierce**  
 Manufactured by: Pierce Manufacturing, Inc.  
 Custom Designed and Manufactured Exclusively For  
**CITY OF SOUTH PORTLAND**

Mo./Yr of Mfg	Mar - 2024	Job No.	35003	WO No.	32388264
GVWR	35,381 KG ( 78,000 LB)	Tree-Limited Max Speed	88 mph	Chassis	Enforcer
DAWR		TIRES		RIMS	COLD-TIRE INFLATION
Front	10,886 KG ( 24,000 LB)	44S65R22.5 (L)	22.50x13.00	R27 4Pa ( 120 PSI)	SINGLE
Rear	24,494 KG ( 54,000 LB)	12R22.5 (H)	22.50x8.25	R27 4Pa ( 120 PSI)	DUAL

THIS VEHICLE CONFORMS TO ALL APPLICABLE U.S. FEDERAL MOTOR VEHICLE SAFETY STANDARDS IN EFFECT ON THE DATE OF MANUFACTURE SHOWN ABOVE.

Component	Fluid Capacity	Fluid Type
Engine	41.0 Liter	41.0 Quarts
Trans	26.8 Liter	26.8 Quarts
Transfer	47.0 Liter	47.0 Quarts
Power Steering	3.0 Liter	3.0 Quarts
Front Axle Oil (if so Equipped)	16.0 Liter	16.0 Quarts
Rear Axle Oil	17.1 Liter	17.1 Quarts
Leaf Oil	1.0 Liter	1.0 Quarts
Leaf Grease	6.0 Liter	6.0 Quarts
Shock Oil	1.0 Liter	1.0 Quarts
Emergency Brake Hydraulic System	1.0 Liter	1.0 Quarts
Brake Oil	1.0 Liter	1.0 Quarts

**WARNING**  
 Diesel engine exhaust and some of its constituents are known to the State of California to cause cancer, birth defects and other reproductive harm.

**CAUTION**  
 Equipment Damage  
 Read service manual  
 Before working disconnect battery  
 Electrical devices  
 Failure to comply may damage vehicle.

DSC00508



DSC00509



DSC00510



DSC00511



DSC00512



DSC00513



DSC00514



DSC00515



DSC00516



DSC00517



DSC00518



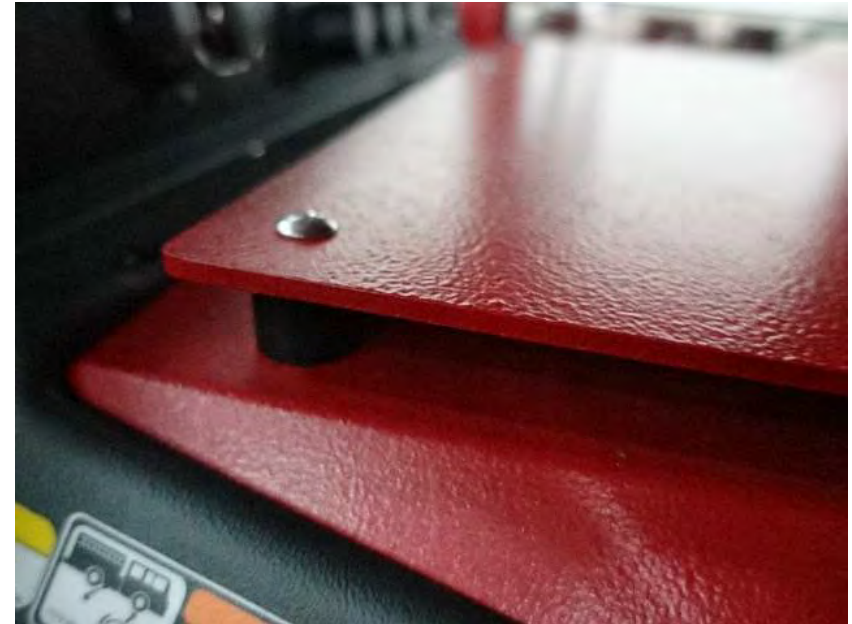
DSC00519



DSC00520



DSC00521



DSC00522



DSC00523



DSC00524



DSC00525



DSC00526



DSC00527



DSC00528

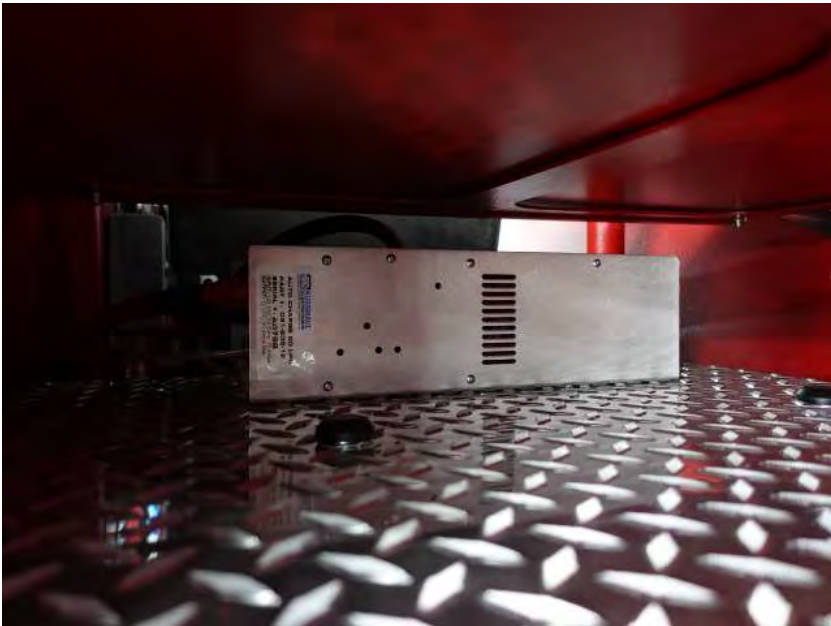




DSC00529



DSC00530



DSC00531



DSC00532



DSC00533



DSC00534



DSC00535



DSC00536



DSC00537



DSC00538



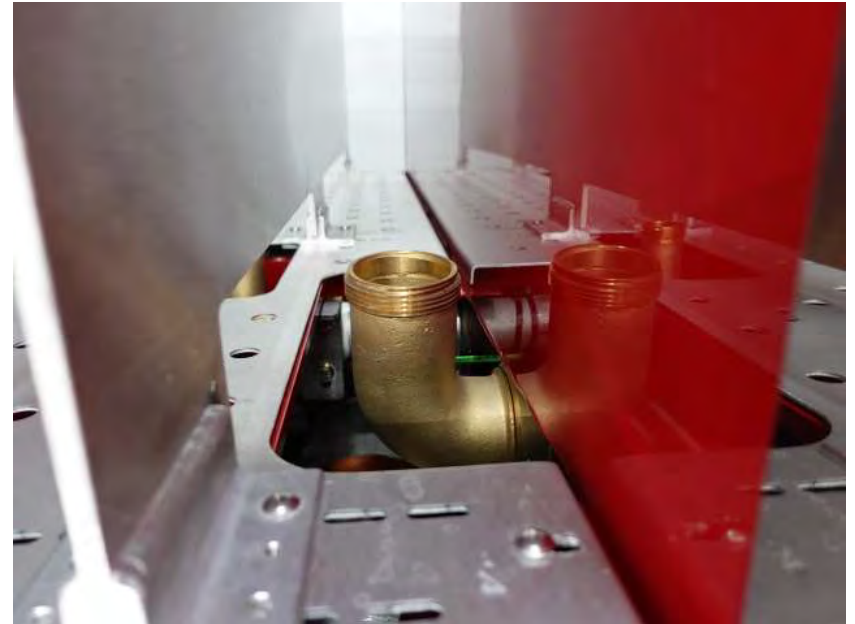
DSC00539



DSC00540



DSC00541



DSC00542



DSC00543



DSC00544



DSC00545



DSC00546



DSC00547



DSC00548



DSC00549



DSC00550



DSC00551



DSC00552



DSC00553



DSC00554



DSC00555



DSC00556



DSC00557



DSC00558



DSC00559



DSC00560





DSC00561



DSC00562



DSC00563



DSC00564



DSC00565



DSC00566



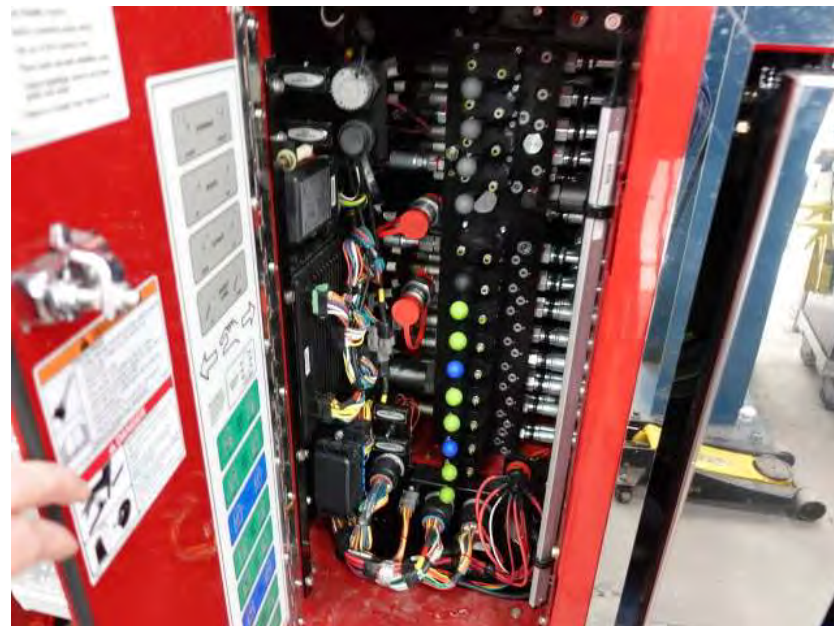
DSC00567



DSC00568



DSC00569



DSC00570



DSC00571



DSC00572



DSC00573



DSC00574



DSC00575



DSC00576



DSC00577



DSC00578



DSC00579



DSC00580



DSC00581



DSC00582



DSC00583



DSC00584



DSC00585



DSC00586



DSC00587



DSC00588



DSC00589



DSC00590



DSC00591



DSC00592





DSC00593



DSC00594



DSC00595



DSC00596



DSC00597



DSC00598



DSC00599



DSC00600



DSC00601



DSC00602



DSC00603



DSC00604



DSC00605



DSC00606



DSC00607



DSC00608



DSC00609



DSC00610



DSC00611



DSC00612



DSC00613



DSC00614



DSC00615



DSC00616



DSC00617



DSC00618



DSC00619



DSC00620



DSC00621



DSC00622



DSC00623



DSC00624





DSC00625



DSC00626



DSC00627



DSC00628



DSC00629



DSC00630



DSC00631



DSC00632



DSC00633



DSC00634



DSC00635



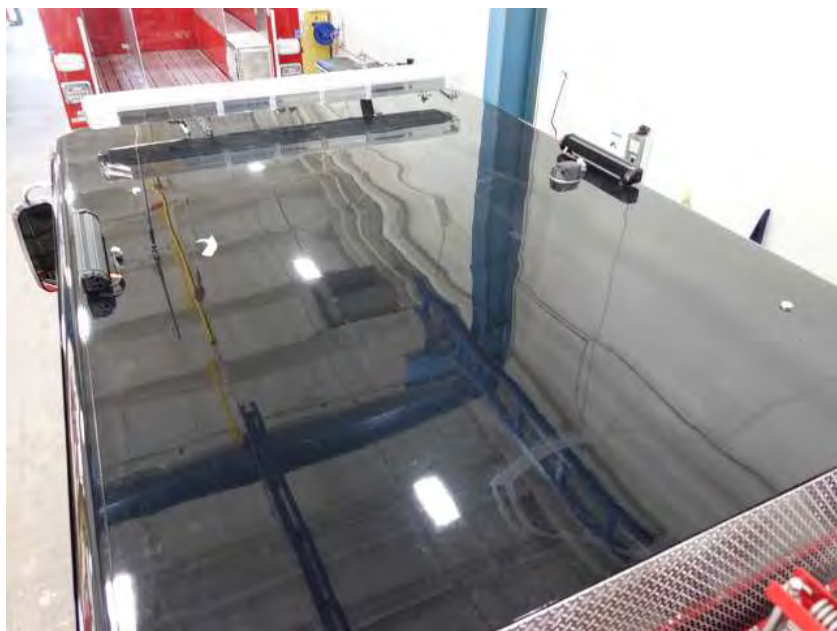
DSC00636



DSC00637



DSC00638



DSC00639



DSC00640



DSC00641



DSC00642



DSC00643



DSC00644



DSC00645



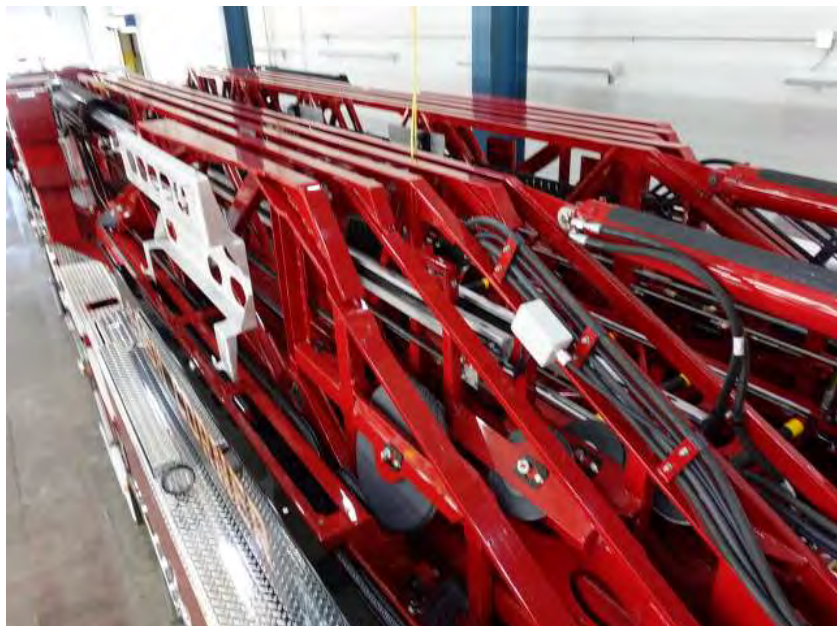
DSC00646



DSC00647



DSC00648



DSC00649



DSC00650



DSC00651



DSC00652



DSC00653



DSC00654



DSC00655



DSC00656





DSC00657



DSC00658



DSC00659



DSC00660



DSC00661



DSC00662



DSC00663



DSC00664



DSC00665



DSC00666



DSC00667



DSC00668



<https://allegiancefr.com>

POWERED BY  
**ALLEGIANCE**  
— TRUCKS® —



An Oshkosh Corporation Company