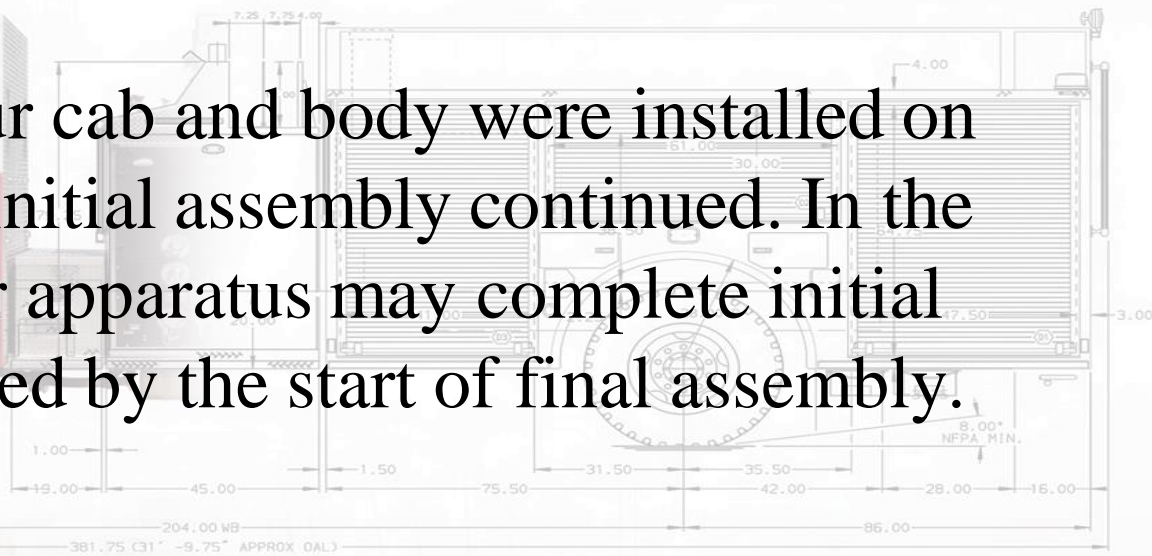


# In-Production Photo Report for Springfield Fire Department, MA Job# 38331

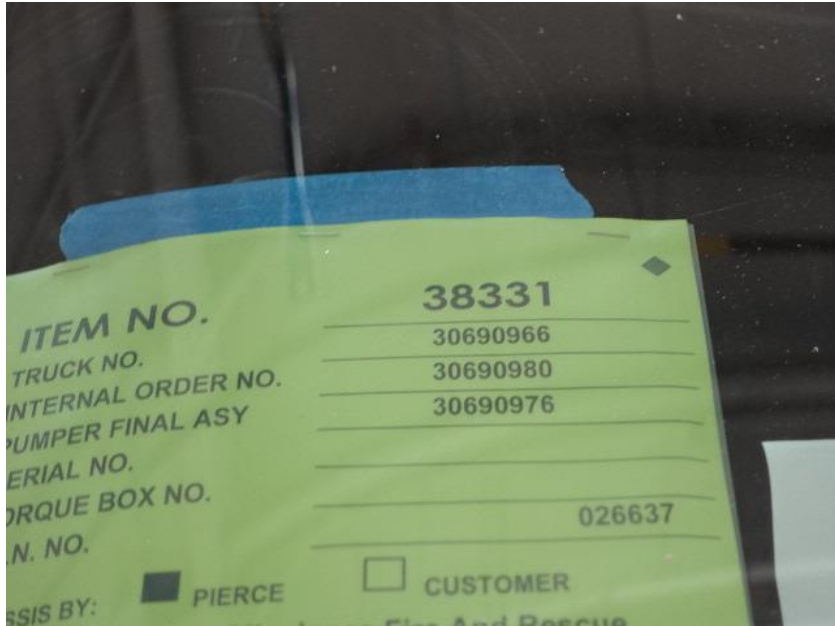
Status as of April 19, 2024

In this report your cab and body were installed on the frame while initial assembly continued. In the next report your apparatus may complete initial assembly followed by the start of final assembly.



*For Valued Customers of*





DSC03272



DSC03273



DSC03274



DSC03275



DSC03276



DSC03277



DSC03278



DSC03279



DSC03280



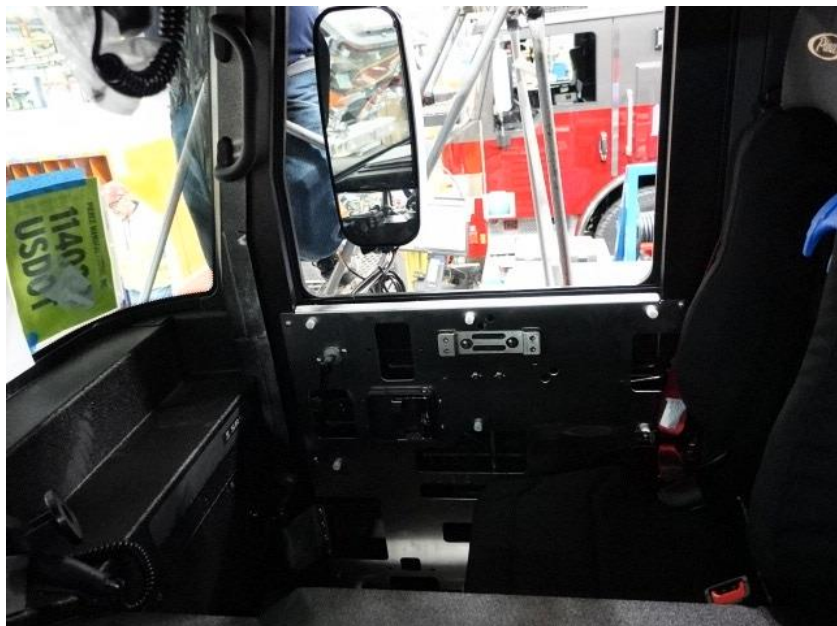
DSC03281



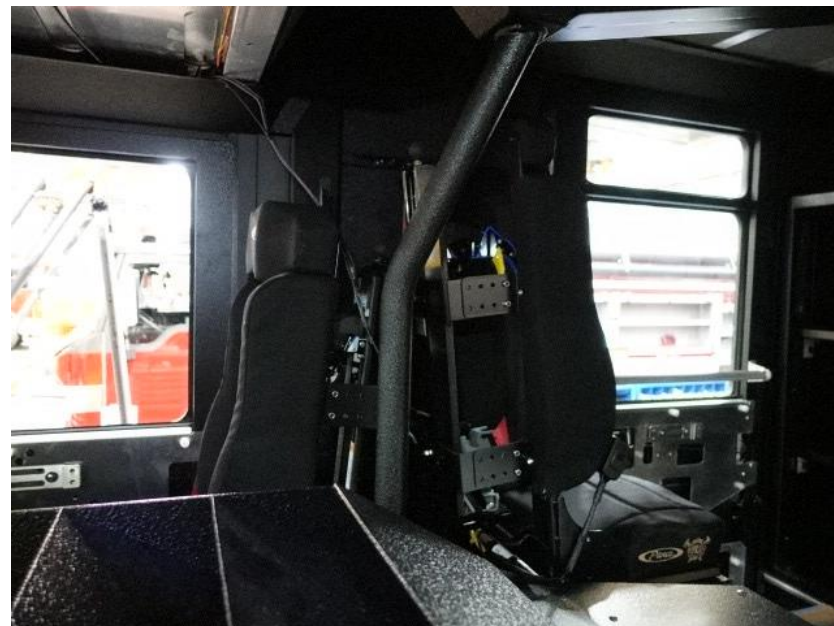
DSC03282



DSC03283



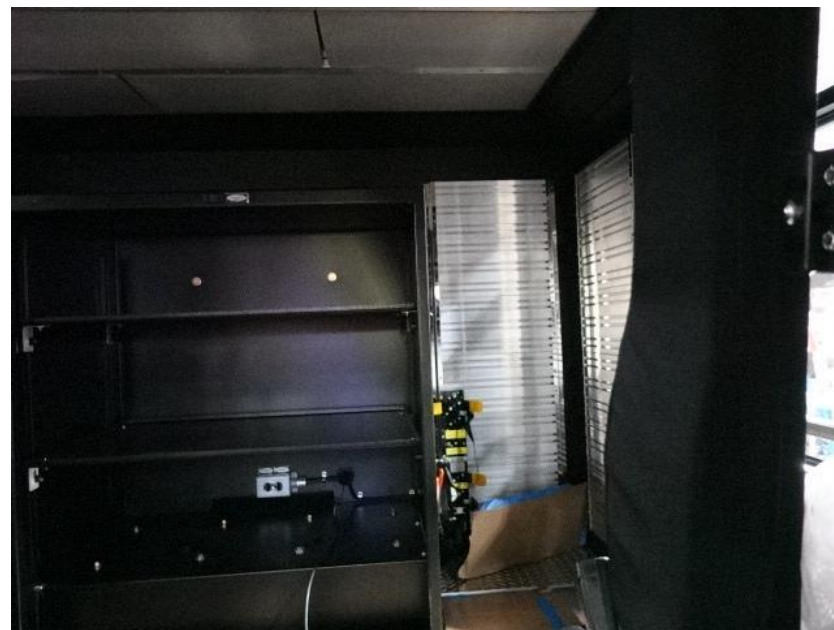
DSC03284



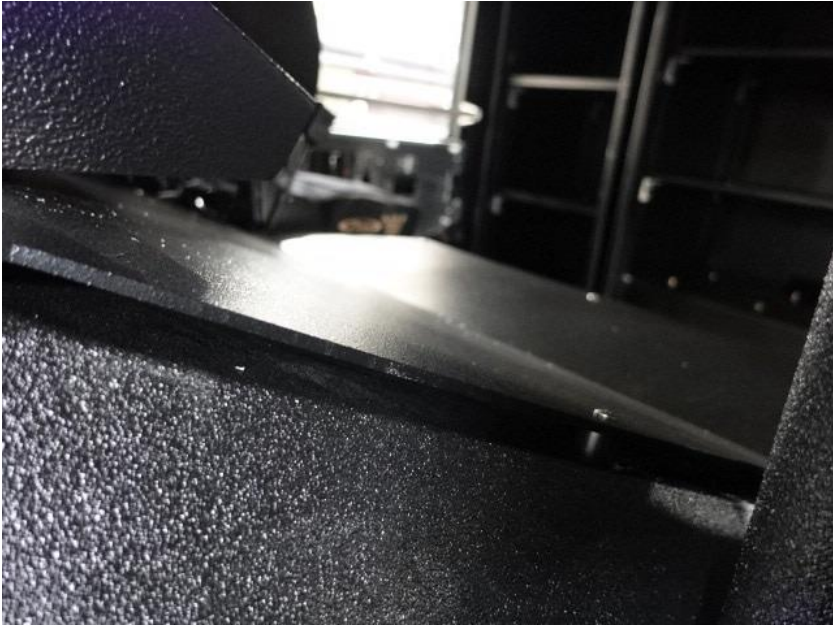
DSC03285



DSC03286



DSC03287



DSC03288



DSC03289



DSC03290



DSC03291



DSC03292



DSC03293



DSC03294



DSC03295



DSC03296



DSC03297



DSC03298



DSC03299





DSC03300



DSC03301



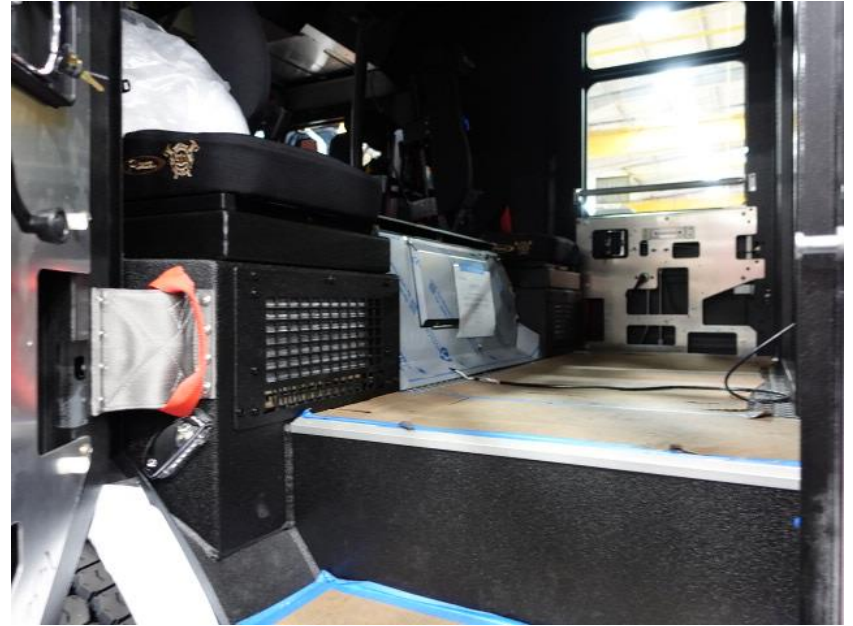
DSC03302



DSC03303



DSC03304



DSC03305



DSC03306



DSC03307



DSC03308



DSC03309



DSC03310



DSC03311



DSC03312



DSC03313



DSC03314



DSC03315



DSC03316



DSC03317



DSC03318



DSC03320



DSC03321



DSC03322



DSC03323



DSC03324



<https://allegiancefr.com>

POWERED BY  
**ALLEGIANCE**  
— T R U C K S —



An Oshkosh Corporation Company