

In-Production Photo Report for Belchertown Fire Department, MA Job# 38225

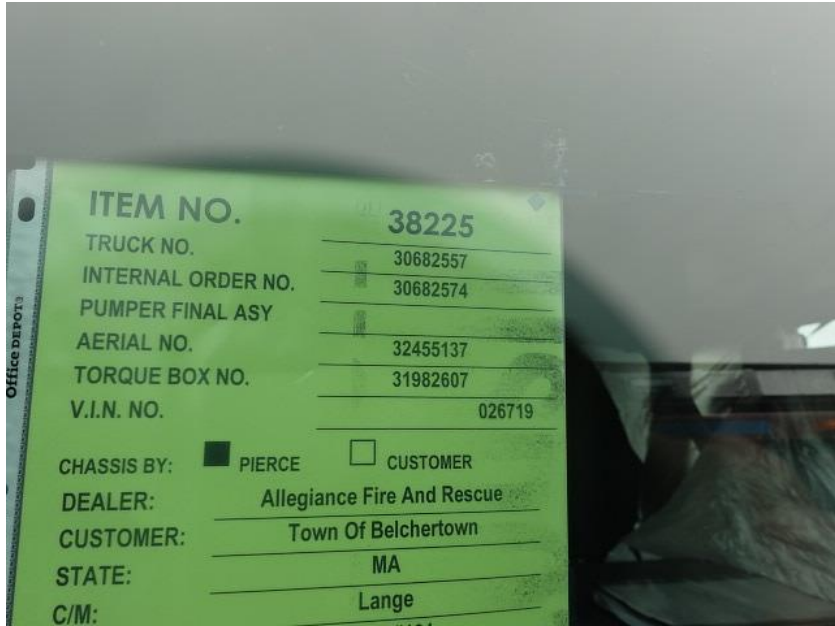
Status as of May 10, 2024

In this report your cab remained staged, the frame build continued, and the pump house began initial assembly, the front body module was staged, and the rear body module began the paint process. In the next report your cab may be installed on the frame, the pump house may continue initial assembly, the torque box and the front body module may remain staged, and the rear body module may continue through paint.

For Valued Customers of



POWERED BY
ALLEGIANCE
TRUCKS®



DSC00526



DSC00527



DSC00528



DSC00529



DSC00530



DSC00803



DSC00804



DSC00805



DSC00806



DSC00807



DSC00808



DSC00809



DSC00810



DSC00811



DSC00812



DSC00364



DSC00365



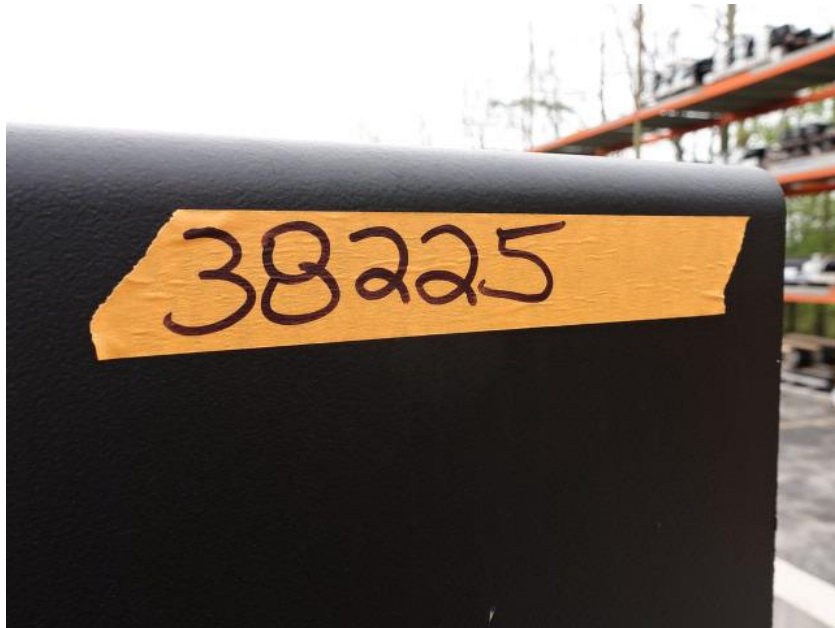
DSC00366



DSC00367



DSC00368



DSC00429



DSC00430



DSC00431



DSC00432



DSC00433



DSC01616



DSC01617



DSC01618



DSC01439



DSC01440



DSC01441



DSC01442



DSC01443



<https://allegiancefr.com>

POWERED BY
ALLEGIANCE
— TRUCKS® —



An Oshkosh Corporation Company