

In-Production Photo Report for Plymouth Fire Department, NH Job# 38693

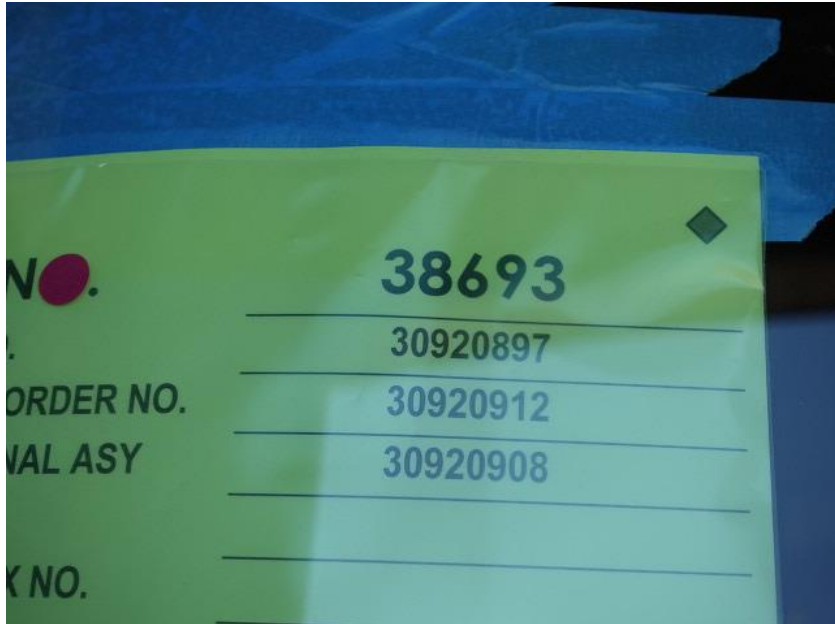
Status as of May 10, 2024

In this report your cab, pump house, and body were installed on the frame while chassis assembly continued. In the next report your apparatus may complete initial assembly followed by the start of final assembly.



POWERED BY
ALLEGIANCE
TRUCKS®

For Valued Customers of



DSC03322



DSC03323



DSC03324



DSC03325



DSC03326



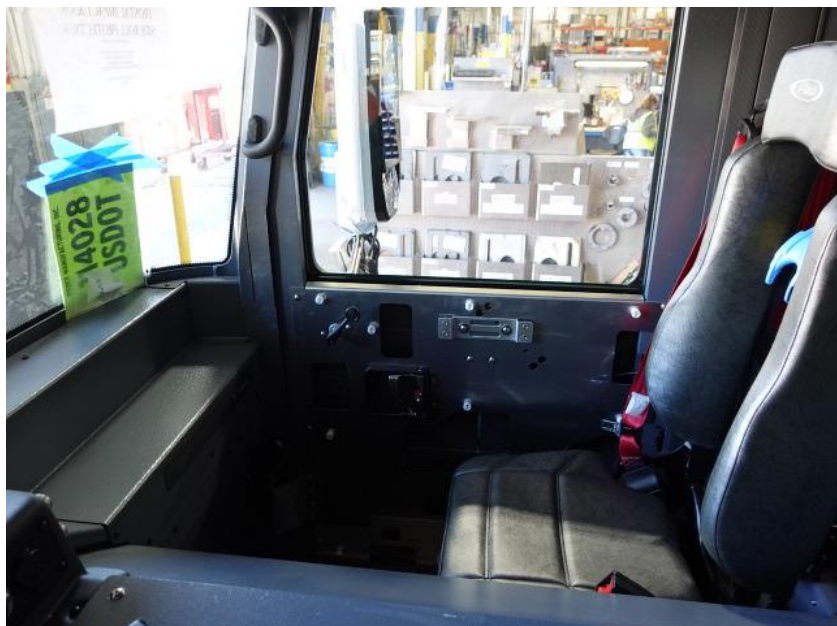
DSC03327



DSC03328



DSC03329



DSC03330



DSC03331



DSC03332



DSC03333



DSC03334



DSC03335



DSC03336



DSC03337



DSC03338



DSC03339



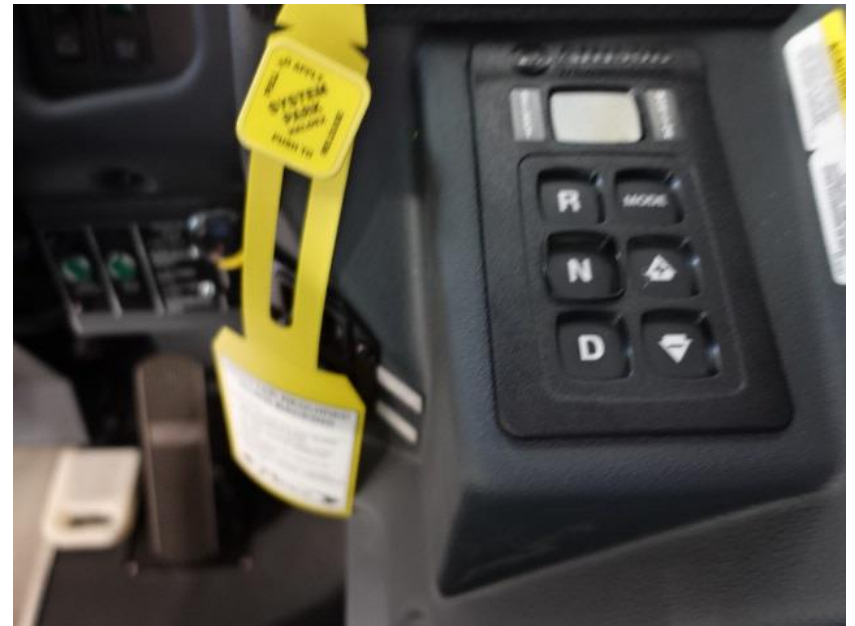
DSC03340



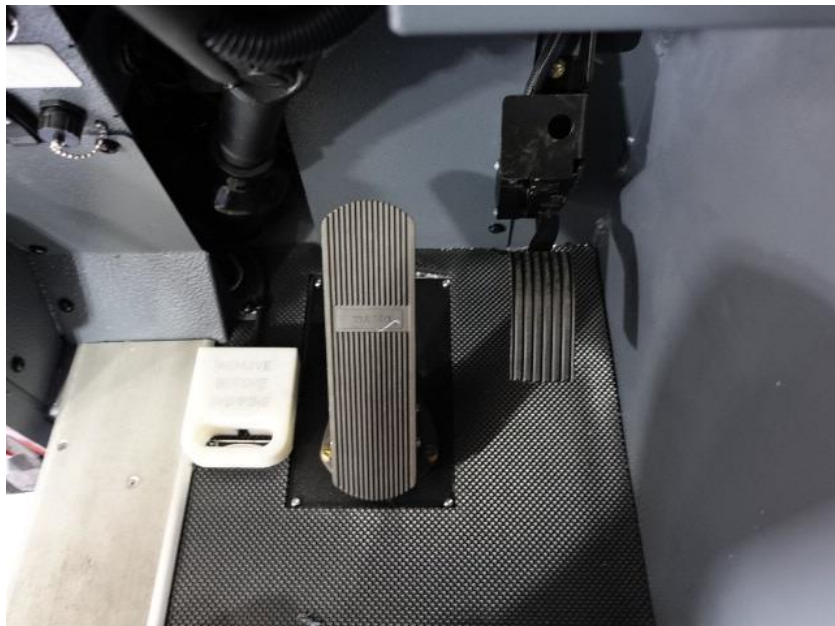
DSC03341



DSC03342



DSC03343



DSC03344



DSC03345



DSC03346



DSC03347



DSC03348



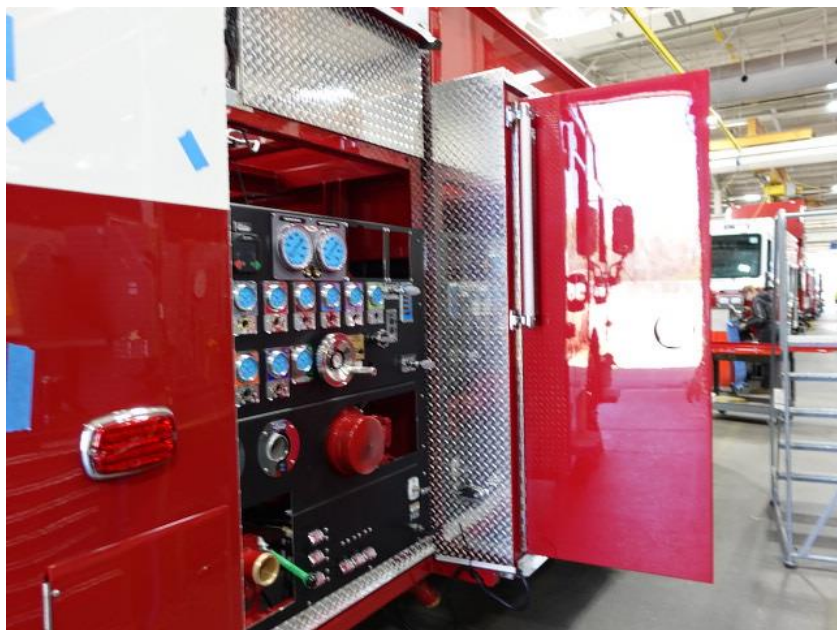
DSC03349



DSC03350



DSC03351



DSC03352



DSC03353



DSC03354



DSC03355



DSC03356



DSC03357



DSC03358



DSC03359



DSC03360



DSC03361



DSC03362



DSC03363



DSC03364



DSC03365



DSC03366



DSC03367



DSC03368



DSC03369



DSC03370



DSC03371



DSC03372



DSC03373



DSC03374



DSC03375



<https://allegiancefr.com>

POWERED BY
ALLEGIANCE
— T R U C K S —



An Oshkosh Corporation Company