

In-Production Photo Report for Brockton Fire Department, MA Job# 38747

Status as of June 07, 2024

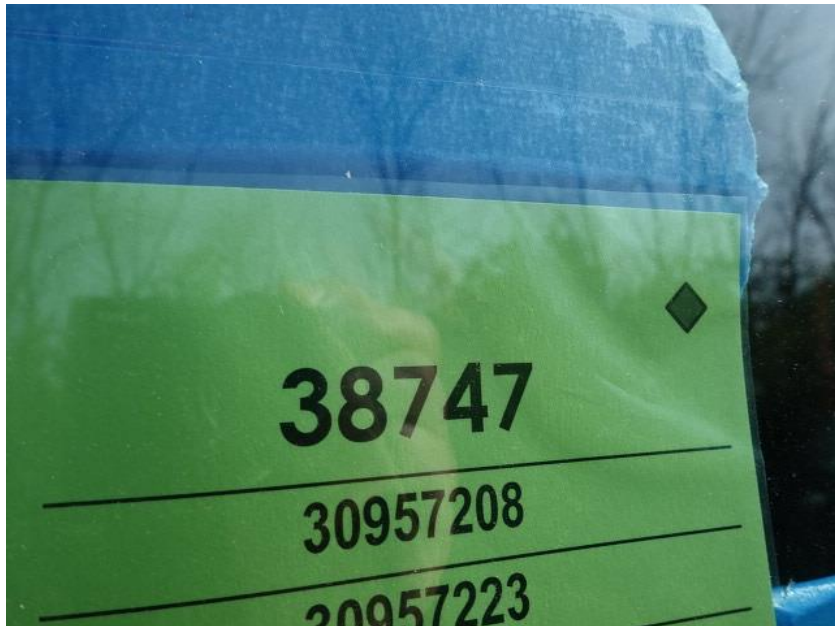
In this report your chassis remained staged to continue assembly, the transverse compartment completed paint, the pump house was painted then continued initial assembly, and the body completed initial assembly. In the next report your chassis may remain staged, the transverse compartment and pump house may continue initial assembly together, and the body may remain staged.



For Valued Customers of



POWERED BY
ALLEGIANCE
TRUCKS®



DSC00007



DSC00008



DSC00009



DSC00010



DSC00011



DSC00012



DSC00013



DSC00014



DSC00015



DSC00016



DSC00017



DSC00018



DSC00019



DSC00020



DSC00021



DSC00022



DSC03083



DSC03084



DSC03085



DSC03086



DSC03087



DSC03088



DSC03089



DSC03090



DSC03091



DSC00969



DSC00970



DSC00971



DSC00972



DSC00973



<https://allegiancefr.com>

POWERED BY
ALLEGIANCE
— TRUCKS® —



An Oshkosh Corporation Company