

# In-Production Photo Report for New Bedford Fire Department, MA Job# 38803

---

Status as of June 14, 2024

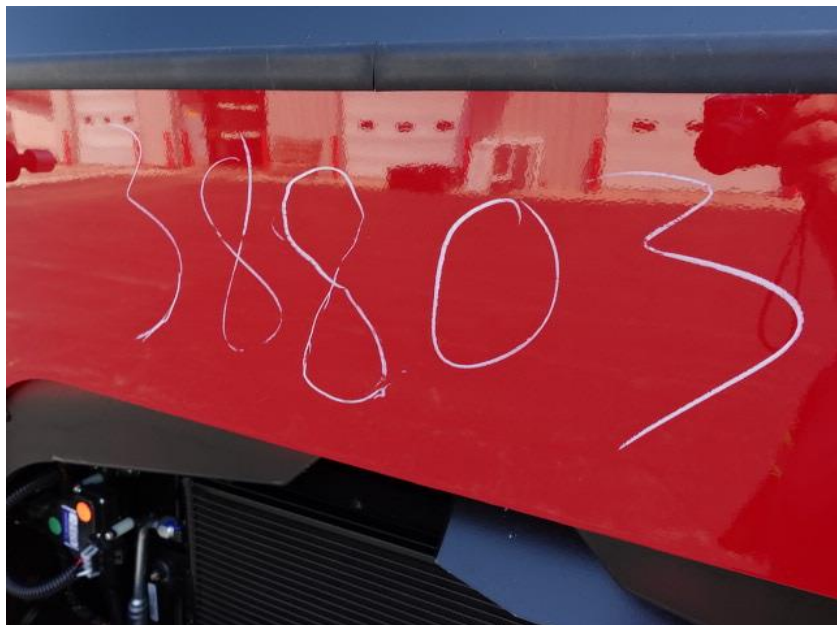
In this report the tractor cab was merged with the frame then staged for protective coating application, the transverse compartment completed paint, the front body modules began in paint, the rear body module continued through paint, and the tiller cab remained staged. In the next report the tractor chassis may be staged to continue assembly, the transverse may be staged, the front body modules may continue the paint process, the rear body module may begin initial assembly, and the tiller cab may remain staged.



*For Valued Customers of*



POWERED BY  
**ALLEGIANCE**  
TRUCKS®



DSC01559



DSC01560



DSC01561



DSC01562



DSC01563



DSC01564



DSC01565



DSC01566



DSC01567



DSC01568



DSC01569



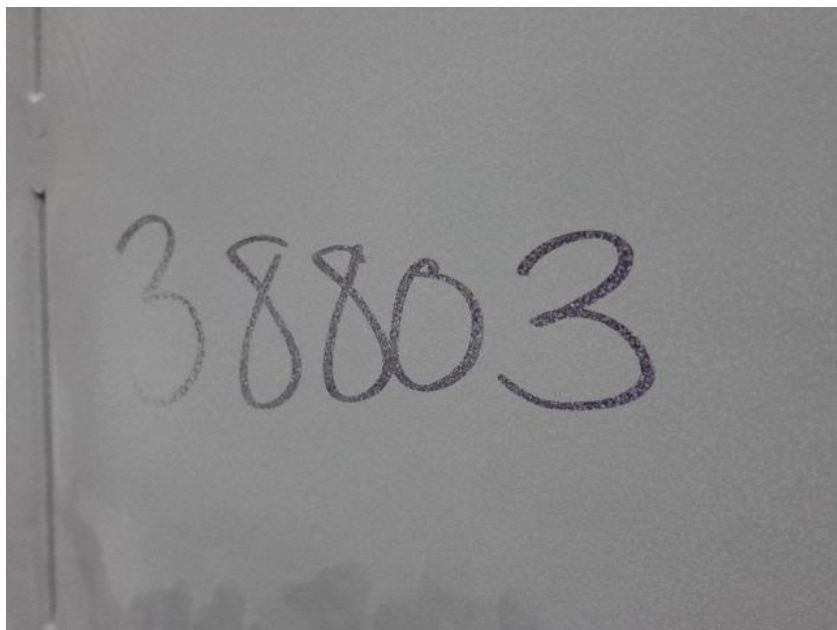
DSC01269



DSC01270



DSC01271



DSC01160



DSC01161



DSC01162



DSC01163



DSC01164



DSC01266



DSC01267



DSC01268



DSC01251



DSC01252



DSC01253



DSC01254



DSC01255



DSC01238





DSC01239



DSC01240



<https://allegiancefr.com>

POWERED BY  
**ALLEGIANC E**  
— T R U C K S ® —



An Oshkosh Corporation Company