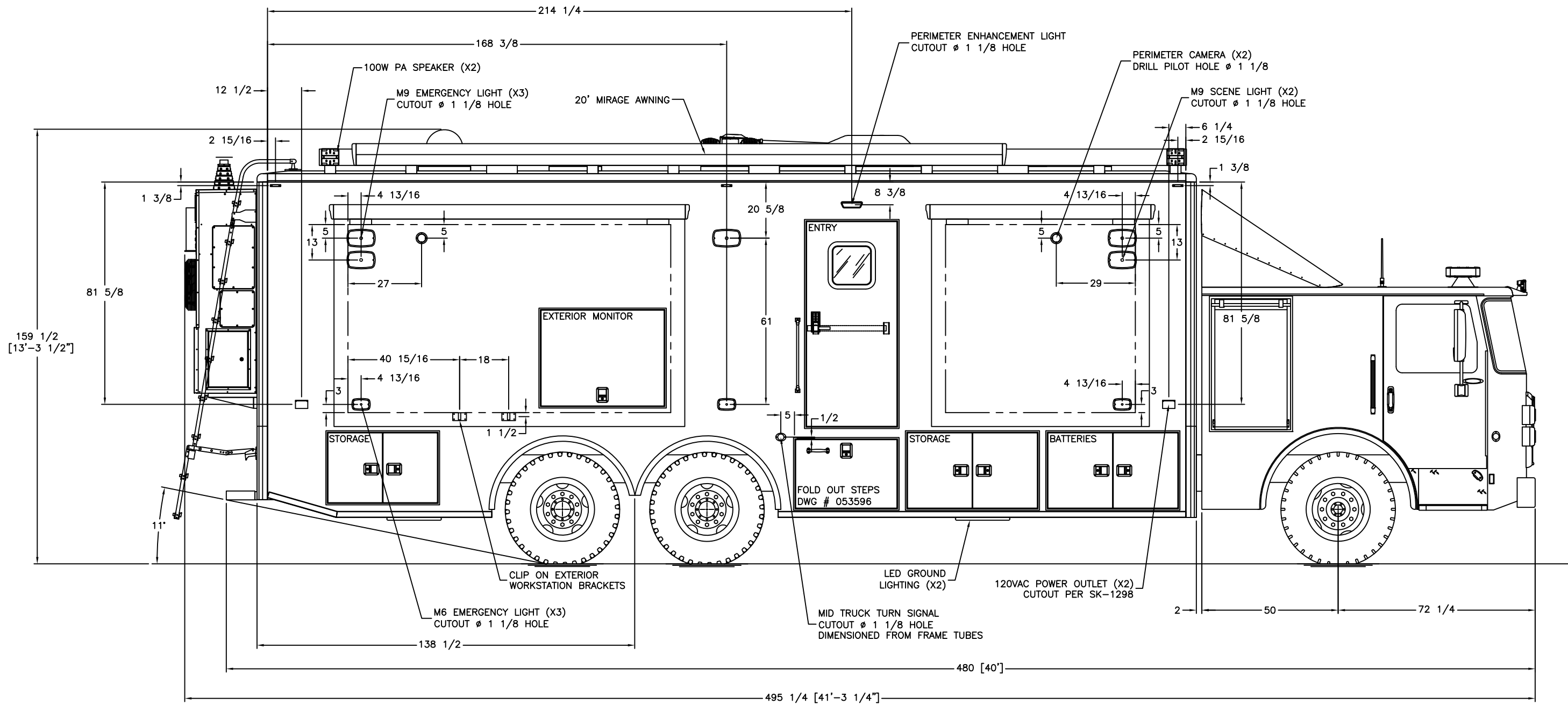


REVISIONS


CHK DATE	CHK BY	DESCRIPTION	DATE	BY	REV
6/29/23	MRS	ENGINEERING RELEASE	6/14/23	CJM	00



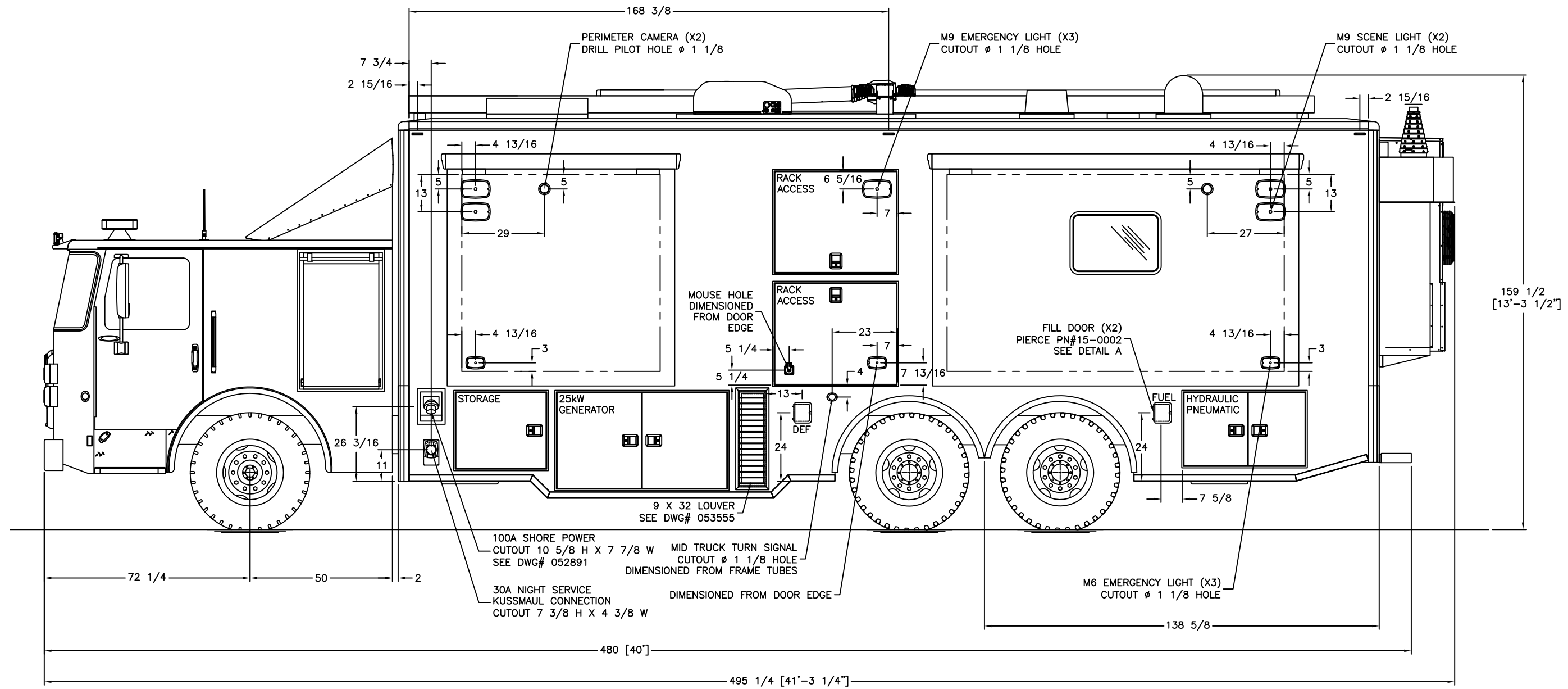
159 1/2
[13'-3 1/2"]

----- INSIDE EDGE OF FRAME TUBE

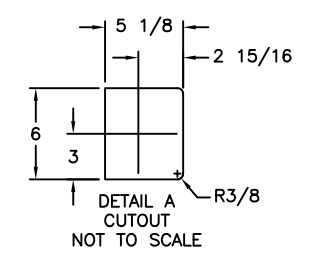
THIS DRAWING IS THE PROPERTY OF FRONTLINE COMMUNICATIONS CORPORATION. IT IS CONFIDENTIAL AND ALL RIGHTS ARE RESERVED. IT SHALL NOT BE REPRODUCED, COPIED, LENT, NOR USED FOR ANY PURPOSE OTHER THAN THAT FOR WHICH IT IS SPECIFICALLY FURNISHED.

DO NOT SCALE THIS DRAWING DIMENSIONS ARE IN INCHES UNLESS OTHERWISE SPECIFIED		MATERIAL SEE NOTES		 <p>12770 44th Street North Clearwater, FL 33762-4713 (727) 573-0400 FAX (727) 571-3295</p>	
TOLERANCES: ANGULAR: ± 1° BEND: ± 1° 2 PLACE DECIMAL ± .010 3 PLACE DECIMAL ± .005 FRACTIONS ± 1/16		FINISH MILL FINISH			
JOB NUMBER OR PRODUCT LINE 91986		DRAWN BY CJM	DATE 6/14/23	<p>EXTERIOR LAYOUT CURB SIDE</p>	
SHEET 1 OF 1	SCALE 40	CHECKED BY MRS	DATE 6/29/23		

REVISIONS						
CHK DATE	CHK BY	DESCRIPTION		DATE	BY	REV
6/29/23	MRS	ENGINEERING RELEASE		6/16/23	CJM	00



NOTE: DEF AND FUEL CUTOUTS DIMENSIONED FROM FRAME TUBES



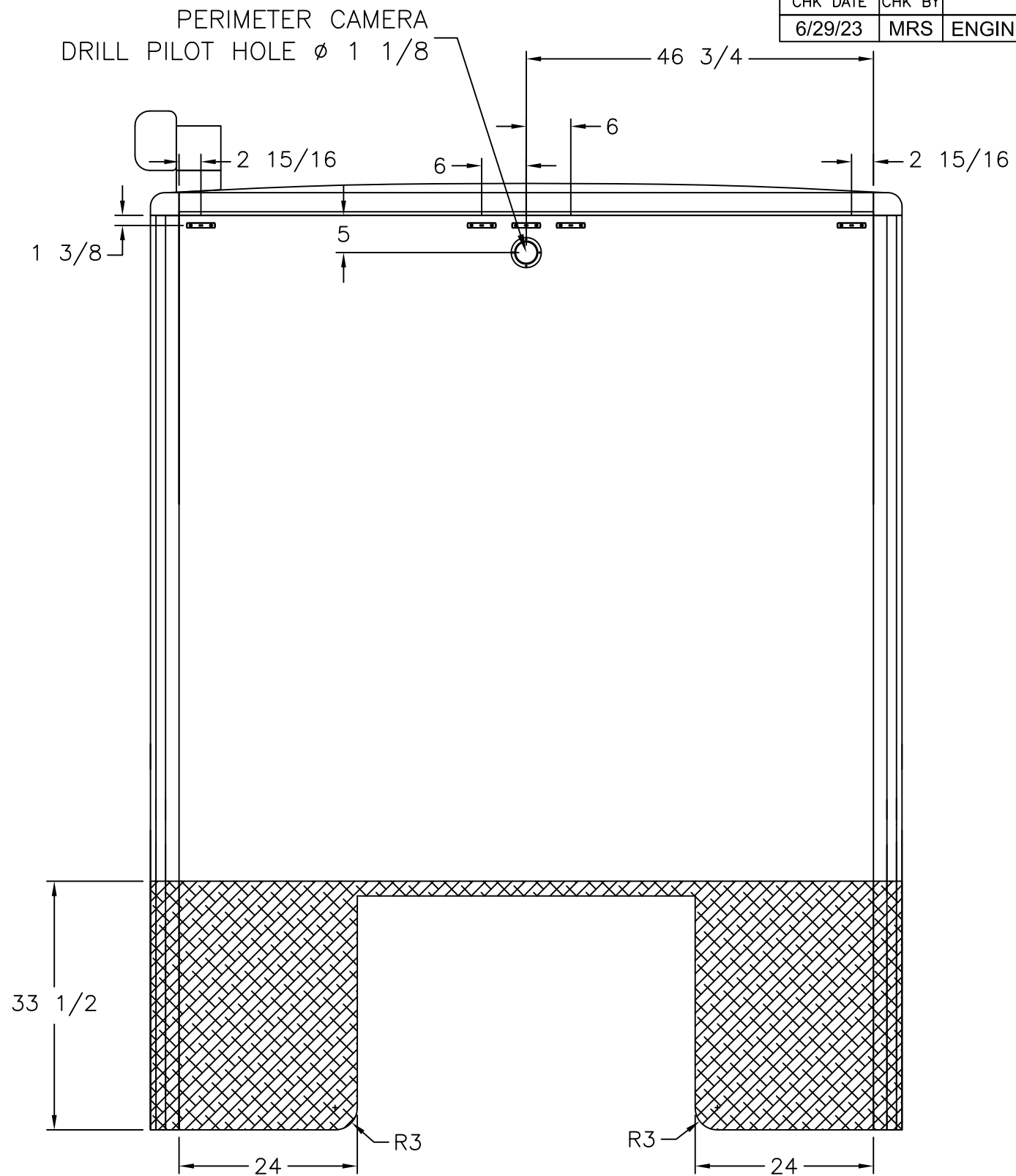
----- INSIDE EDGE OF FRAME TUBE

THIS DRAWING IS THE PROPERTY OF FRONTLINE COMMUNICATIONS CORPORATION. IT IS CONFIDENTIAL AND ALL RIGHTS ARE RESERVED. IT SHALL NOT BE REPRODUCED, COPIED, LENT, NOR USED FOR ANY PURPOSE OTHER THAN THAT FOR WHICH IT IS SPECIFICALLY FURNISHED.


DO NOT SCALE THIS DRAWING DIMENSIONS ARE IN INCHES UNLESS OTHERWISE SPECIFIED		MATERIAL SEE NOTES		<p>12770 44th Street North Clearwater, FL 33762-4713 (727) 573-0400 FAX (727) 571-3295</p>	
TOLERANCES: ANGULAR: \pm 1° BEND: \pm 1° 2 PLACE DECIMAL \pm .010 3 PLACE DECIMAL \pm .005 FRACTIONS \pm 1/16		FINISH MILL FINISH		<p>EXTERIOR LAYOUT STREET SIDE</p>	
JOB NUMBER OR PRODUCT LINE 91986		DRAWN BY CJM	DATE 6/16/23	SIZE B	DWG NO. 91986-50300
SHEET 1 OF 1	SCALE 40	CHECKED BY MRS	DATE 6/29/23		

REVISIONS

CHK DATE	CHK BY	DESCRIPTION	DATE	BY	REV
6/29/23	MRS	ENGINEERING RELEASE	6/16/23	CJM	00

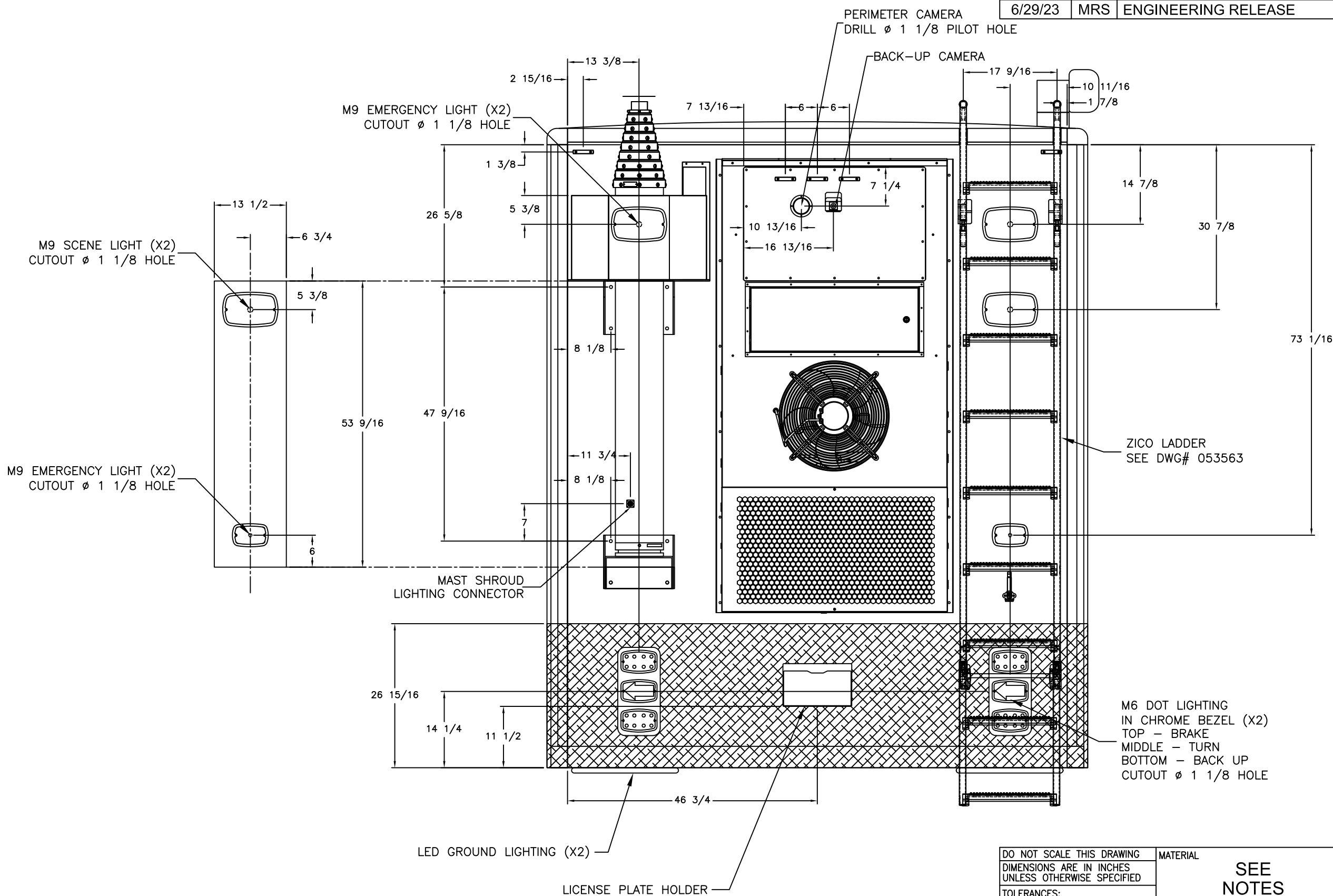


THIS DRAWING IS THE PROPERTY OF FRONTLINE COMMUNICATIONS CORPORATION. IT IS CONFIDENTIAL AND ALL RIGHTS ARE RESERVED. IT SHALL NOT BE REPRODUCED, COPIED, LENT, NOR USED FOR ANY PURPOSE OTHER THAN THAT FOR WHICH IT IS SPECIFICALLY FURNISHED.

DO NOT SCALE THIS DRAWING DIMENSIONS ARE IN INCHES UNLESS OTHERWISE SPECIFIED		MATERIAL SEE NOTES		 12770 44th Street North Clearwater, FL 33762-4713 (727) 573-0400 FAX (727) 571-3295	
TOLERANCES: ANGULAR: ± 1° BEND: ± 1° 2 PLACE DECIMAL ± .010 3 PLACE DECIMAL ± .005 FRACTIONS ± 1/16		FINISH MILL FINISH		EXTERIOR LAYOUT FRONT	
JOB NUMBER OR PRODUCT LINE 91986		DRAWN BY CJM	DATE 6/16/23		
SHEET 1 OF 1	SCALE 20	CHECKED BY MRS	DATE 6/29/23	SIZE B	DWG NO. 91986-50400

REVISIONS

CHK DATE	CHK BY	DESCRIPTION	DATE	BY	REV
6/29/23	MRS	ENGINEERING RELEASE	6/26/23	CJM	00



ZICO LADDER
SEE DWG# 053563

M6 DOT LIGHTING
IN CHROME BEZEL (X2)
TOP - BRAKE
MIDDLE - TURN
BOTTOM - BACK UP
CUTOUT Ø 1 1/8 HOLE

THIS DRAWING IS THE PROPERTY OF FRONTLINE COMMUNICATIONS CORPORATION. IT IS CONFIDENTIAL AND ALL RIGHTS ARE RESERVED. IT SHALL NOT BE REPRODUCED, COPIED, LENT, NOR USED FOR ANY PURPOSE OTHER THAN THAT FOR WHICH IT IS SPECIFICALLY FURNISHED.

DO NOT SCALE THIS DRAWING
DIMENSIONS ARE IN INCHES
UNLESS OTHERWISE SPECIFIED
TOLERANCES:
ANGULAR: ± 1° BEND: ± 1°
2 PLACE DECIMAL ± .010
3 PLACE DECIMAL ± .005
FRACTIONS ± 1/16

MATERIAL
SEE NOTES
FINISH
MILL FINISH

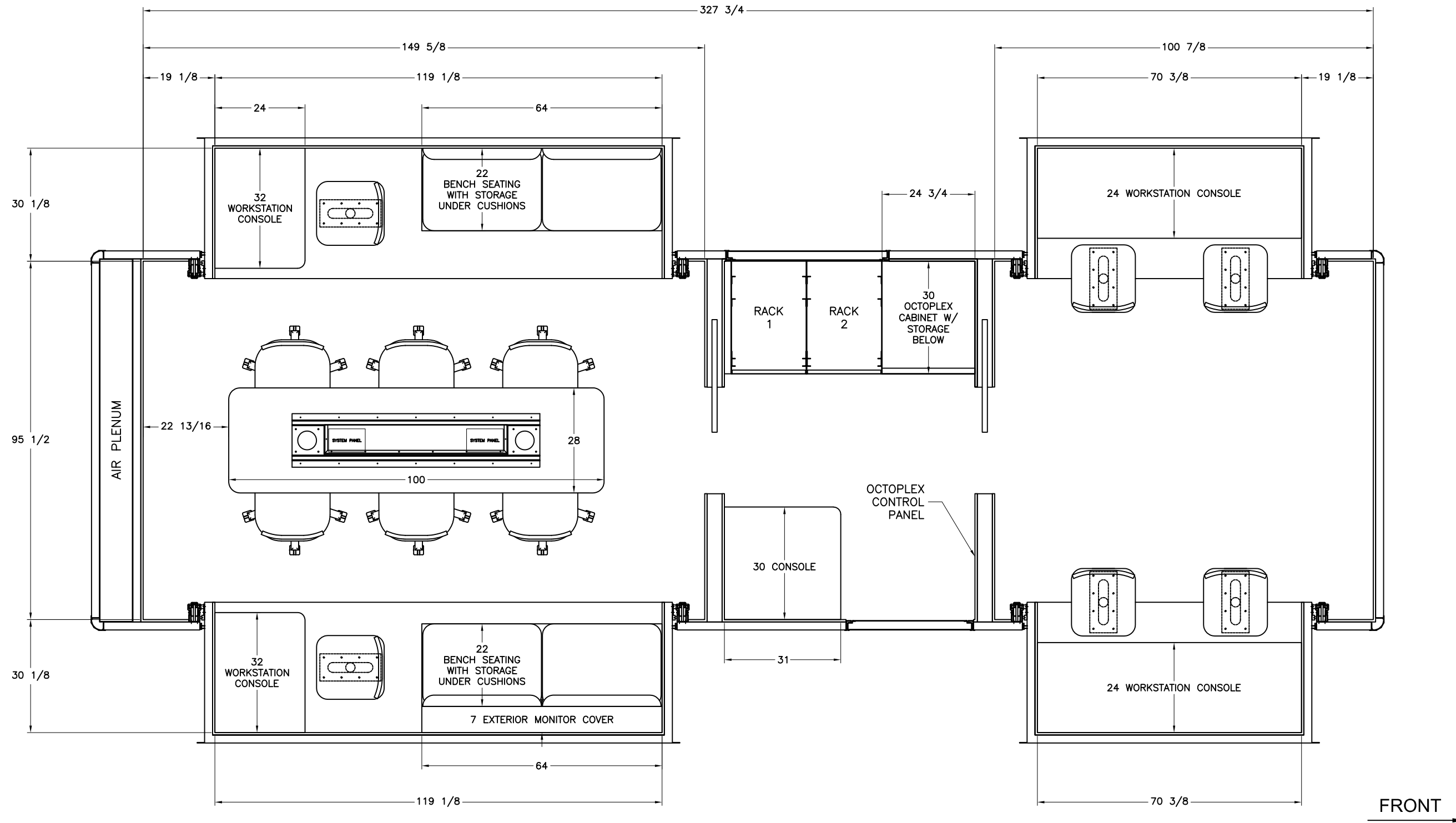
JOB NUMBER OR PRODUCT LINE
91986
SHEET
1 OF 1
SCALE
20

DRAWN BY
CJM
DATE
6/26/23
CHECKED BY
MRS
DATE
6/29/23

FRONTLINE COMMUNICATIONS
A Division of Pierce Manufacturing Inc.
12770 44th Street North
Clearwater, FL 33762-4713
(727) 573-0400
FAX (727) 571-3295


EXTERIOR LAYOUT REAR
SIZE
B
DWG NO.
91986-50500

REVISIONS					
CHK DATE	CHK BY	DESCRIPTION	DATE	BY	REV
7/19/23	MRS	ENGINEERING RELEASE	7/7/23	CJM	00

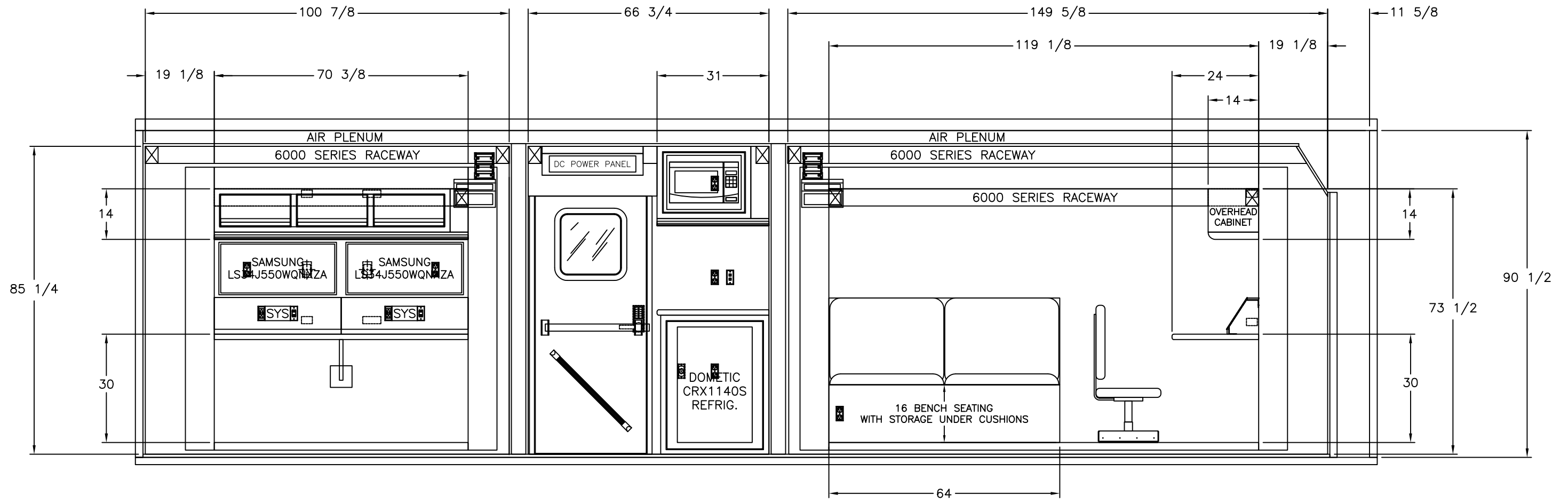


FRONT →

THIS DRAWING IS THE PROPERTY OF FRONTLINE COMMUNICATIONS CORPORATION. IT IS CONFIDENTIAL AND ALL RIGHTS ARE RESERVED. IT SHALL NOT BE REPRODUCED, COPIED, LENT, NOR USED FOR ANY PURPOSE OTHER THAN THAT FOR WHICH IT IS SPECIFICALLY FURNISHED.

DO NOT SCALE THIS DRAWING DIMENSIONS ARE IN INCHES UNLESS OTHERWISE SPECIFIED		MATERIAL SEE NOTES		 12770 44th Street North Clearwater, FL 33762-4713 (727) 573-0400 FAX (727) 571-3295	
TOLERANCES: ANGULAR: ± 1° BEND: ± 1° 2 PLACE DECIMAL ± .010 3 PLACE DECIMAL ± .005 FRACTIONS ± 1/16		FINISH MILL FINISH		INTERIOR LAYOUT FLOOR	
JOB NUMBER OR PRODUCT LINE 91986		DRAWN BY CJM	DATE 7/7/23		
SHEET 1 OF 1	SCALE 30	CHECKED BY MRS	DATE 7/19/23	SIZE B	DWG NO. 91986-40100

REVISIONS						
CHK DATE	CHK BY	DESCRIPTION		DATE	BY	REV
7/19/23	MRS	ENGINEERING RELEASE		7/11/23	CJM	00



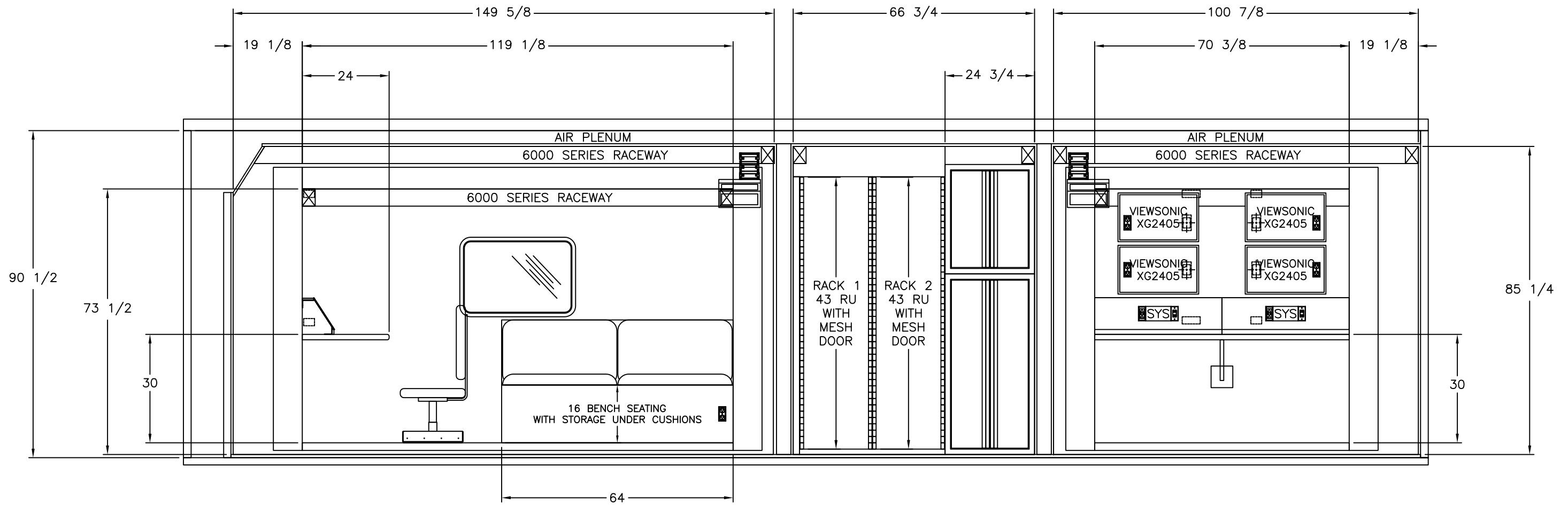
FRONT
←

- NETWORK / PHONE
- DIMMER SWITCH (LED LIGHTS)
- 120V AC POWER / USB POWER
- 120V AC POWER (DUPLEX)
- 12V DC POWER
- LOW VOLTAGE DEVICE RING (SYSTEM)

THIS DRAWING IS THE PROPERTY OF FRONTLINE COMMUNICATIONS CORPORATION. IT IS CONFIDENTIAL AND ALL RIGHTS ARE RESERVED. IT SHALL NOT BE REPRODUCED, COPIED, LENT, NOR USED FOR ANY PURPOSE OTHER THAN THAT FOR WHICH IT IS SPECIFICALLY FURNISHED.

DO NOT SCALE THIS DRAWING		MATERIAL		 12770 44th Street North Clearwater, FL 33762-4713 (727) 573-0400 FAX (727) 571-3295 A Division of Pierce Manufacturing Inc.	
DIMENSIONS ARE IN INCHES UNLESS OTHERWISE SPECIFIED		SEE NOTES			
TOLERANCES:		FINISH		INTERIOR LAYOUT CURB SIDE	
ANGULAR: ± 1° BEND: ± 1°		MILL FINISH			
2 PLACE DECIMAL ± .010		DRAWN BY		DATE	
3 PLACE DECIMAL ± .005		CJM		7/11/23	
FRACTIONS ± 1/16		CHECKED BY		DATE	
JOB NUMBER OR PRODUCT LINE		MRS		7/19/23	
91986		SHEET		SIZE	
1 OF 1		SCALE		DWG NO.	
30		B		91986-40200	

REVISIONS						
CHK DATE	CHK BY	DESCRIPTION		DATE	BY	REV
7/19/23	MRS	ENGINEERING RELEASE		7/12/23	CJM	00

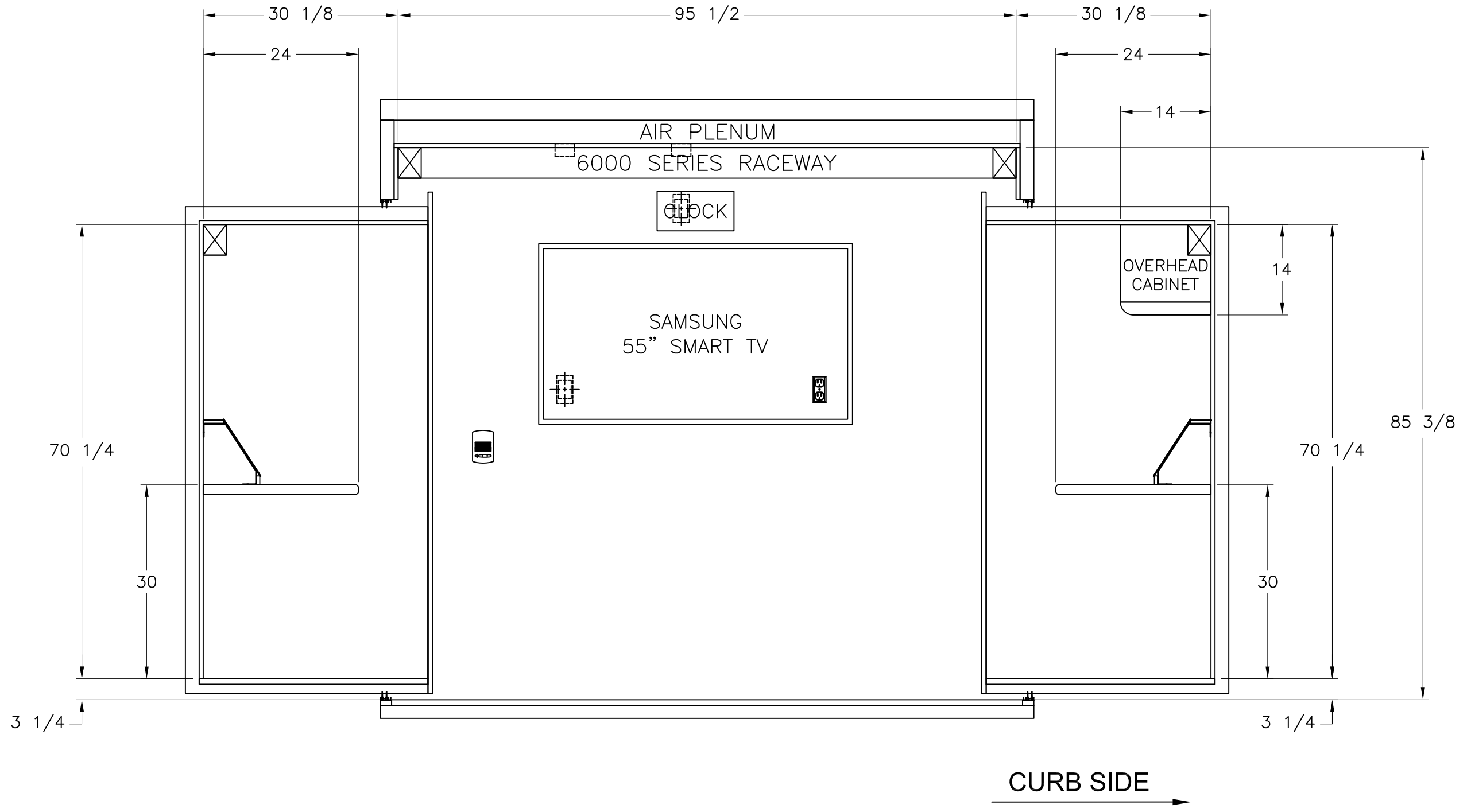


- DIMMER SWITCH (LED LIGHTS)
- 120V AC POWER / USB POWER
- 120V AC POWER (DUPLEX)
- 12V DC POWER
- LOW VOLTAGE DEVICE RING (SYSTEM)

THIS DRAWING IS THE PROPERTY OF FRONTLINE COMMUNICATIONS CORPORATION. IT IS CONFIDENTIAL AND ALL RIGHTS ARE RESERVED. IT SHALL NOT BE REPRODUCED, COPIED, LENT, NOR USED FOR ANY PURPOSE OTHER THAN THAT FOR WHICH IT IS SPECIFICALLY FURNISHED.

DO NOT SCALE THIS DRAWING		MATERIAL		 12770 44th Street North Clearwater, FL 33762-4713 (727) 573-0400 FAX (727) 571-3295	
DIMENSIONS ARE IN INCHES UNLESS OTHERWISE SPECIFIED		SEE NOTES			
TOLERANCES:		FINISH		INTERIOR LAYOUT STREET SIDE	
ANGULAR: ± 1° BEND: ± 1°		MILL FINISH			
2 PLACE DECIMAL ± .010		DRAWN BY		DATE	
3 PLACE DECIMAL ± .005		CJM		7/12/23	
FRACTIONS ± 1/16		CHECKED BY		DATE	
JOB NUMBER OR PRODUCT LINE		MRS		7/19/23	
91986		SHEET		SIZE	
1 OF 1		SCALE		DWG NO.	
30		B		91986-40300	

REVISIONS						
CHK DATE	CHK BY	DESCRIPTION		DATE	BY	REV
7/19/23	MRS	ENGINEERING RELEASE		7/13/23	CJM	00

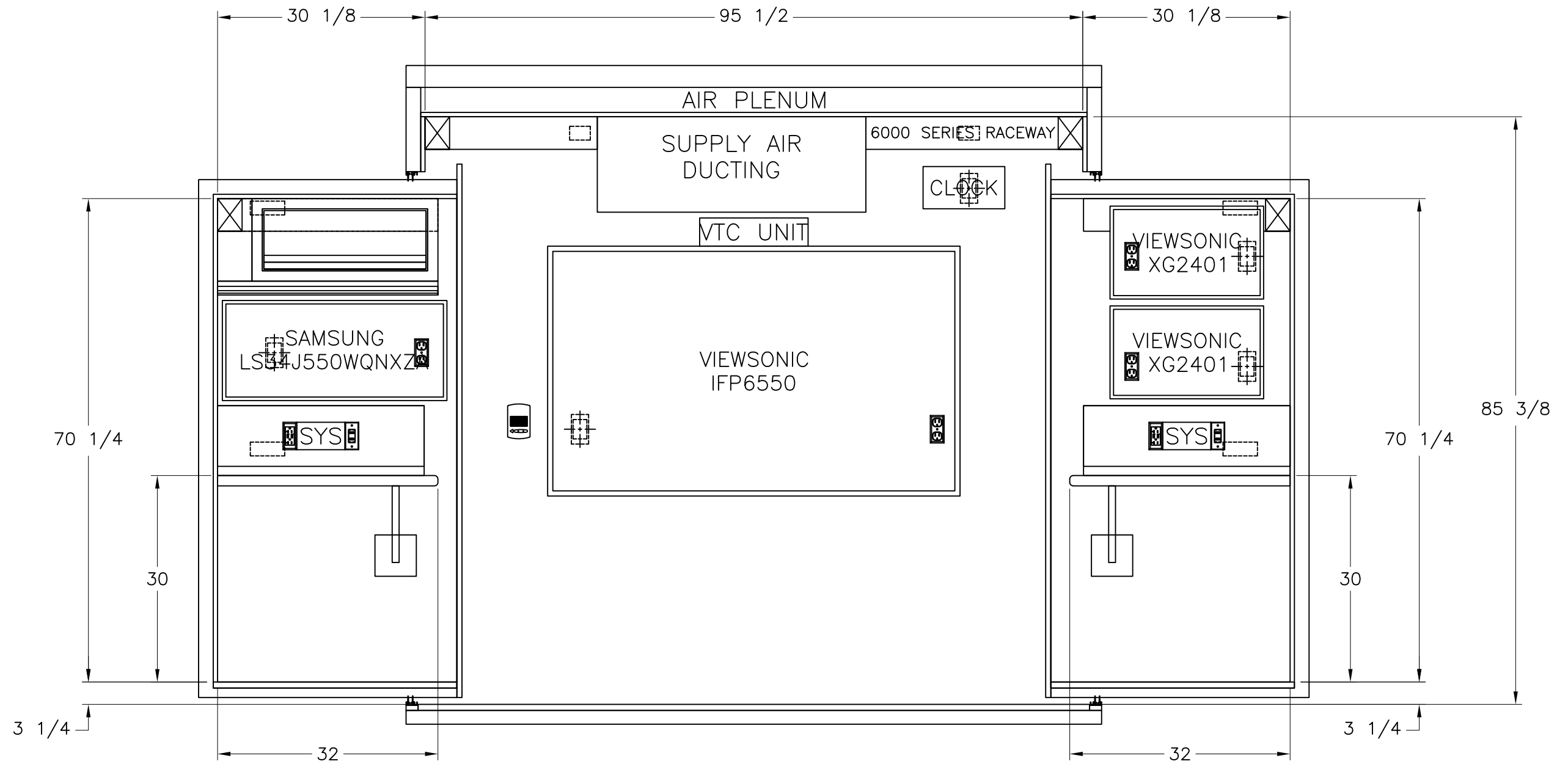


- 120V AC POWER (DUPLEX)
- LOW VOLTAGE DEVICE RING (SYSTEM)
- CO DETECTOR

THIS DRAWING IS THE PROPERTY OF FRONTLINE COMMUNICATIONS CORPORATION. IT IS CONFIDENTIAL AND ALL RIGHTS ARE RESERVED. IT SHALL NOT BE REPRODUCED, COPIED, LENT, NOR USED FOR ANY PURPOSE OTHER THAN THAT FOR WHICH IT IS SPECIFICALLY FURNISHED.

DO NOT SCALE THIS DRAWING DIMENSIONS ARE IN INCHES UNLESS OTHERWISE SPECIFIED		MATERIAL SEE NOTES		 12770 44th Street North Clearwater, FL 33762-4713 (727) 573-0400 FAX (727) 571-3295	
TOLERANCES: ANGULAR: ± 1° BEND: ± 1° 2 PLACE DECIMAL ± .010 3 PLACE DECIMAL ± .005 FRACTIONS ± 1/16		FINISH MILL FINISH		INTERIOR LAYOUT FRONT WALL	
JOB NUMBER OR PRODUCT LINE 91986		DRAWN BY CJM	DATE 7/13/23	SIZE B	
SHEET 1 OF 1	SCALE 18	CHECKED BY MRS	DATE 7/19/23	DWG NO. 91986-40400	

REVISIONS						
CHK DATE	CHK BY	DESCRIPTION		DATE	BY	REV
7/19/23	MRS	ENGINEERING RELEASE		7/13/23	CJM	00



← CURB SIDE

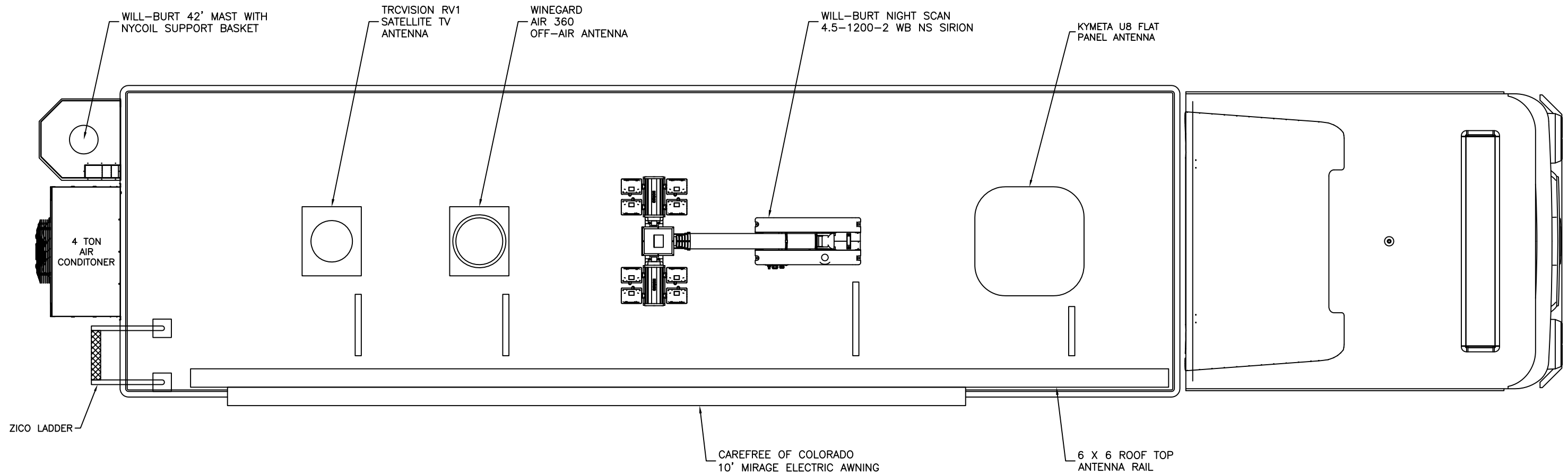
- 120V AC POWER (DUPLEX)
- LOW VOLTAGE DEVICE RING (SYSTEM)
- CO DETECTOR

THIS DRAWING IS THE PROPERTY OF FRONTLINE COMMUNICATIONS CORPORATION. IT IS CONFIDENTIAL AND ALL RIGHTS ARE RESERVED. IT SHALL NOT BE REPRODUCED, COPIED, LENT, NOR USED FOR ANY PURPOSE OTHER THAN THAT FOR WHICH IT IS SPECIFICALLY FURNISHED.


DO NOT SCALE THIS DRAWING		MATERIAL		 12770 44th Street North Clearwater, FL 33762-4713 (727) 573-0400 FAX (727) 571-3295	
DIMENSIONS ARE IN INCHES UNLESS OTHERWISE SPECIFIED		SEE NOTES			
TOLERANCES:		FINISH		INTERIOR LAYOUT REAR WALL	
ANGULAR: ± 1° BEND: ± 1"		MILL FINISH			
2 PLACE DECIMAL ± .010		DRAWN BY		DATE	
3 PLACE DECIMAL ± .005		CJM		7/13/23	
FRACTIONS ± 1/16		CHECKED BY		DATE	
JOB NUMBER OR PRODUCT LINE		MRS		7/19/23	
91986		SHEET		SIZE	
1 OF 1		SCALE		DWG NO.	
18		B		91986-40500	

REVISIONS

CHK DATE	CHK BY	DESCRIPTION	DATE	BY	REV
6/29/23	MRS	ENGINEERING RELEASE	6/27/23	CJM	00



THIS DRAWING IS THE PROPERTY OF FRONTLINE COMMUNICATIONS CORPORATION. IT IS CONFIDENTIAL AND ALL RIGHTS ARE RESERVED. IT SHALL NOT BE REPRODUCED, COPIED, LENT, NOR USED FOR ANY PURPOSE OTHER THAN THAT FOR WHICH IT IS SPECIFICALLY FURNISHED.

DO NOT SCALE THIS DRAWING DIMENSIONS ARE IN INCHES UNLESS OTHERWISE SPECIFIED		MATERIAL SEE NOTES		 12770 44th Street North Clearwater, FL 33762-4713 (727) 573-0400 FAX (727) 571-3295 A Division of Pierce Manufacturing Inc.	
TOLERANCES: ANGULAR: ± 1° BEND: ± 1° 2 PLACE DECIMAL ± .010 3 PLACE DECIMAL ± .005 FRACTIONS ± 1/16		FINISH MILL FINISH		EXTERIOR LAYOUT ROOF	
JOB NUMBER OR PRODUCT LINE 91986		DRAWN BY CJM	DATE 6/27/23		
SHEET 1 OF 2	SCALE 35	CHECKED BY MRS	DATE 6/29/23	SIZE B	DWG NO. 91986-50600