

In-Production Photo Report for New Bedford Fire Department, MA Job# 38803

Status as of August 16, 2024

In this report your apparatus continued the quality and graphics process where any remaining content will be applied. Once finished, it will be made ready for your customer acceptance inspection. This is your last scheduled report.



For Valued Customers of

...ce Manufacturing, Inc.
 ...nufactured Exclusively For -
NEW BEDFORD

...nkoff Corporation
 VEHICLE EMISSIONS
 CONTROL INFORMATION
 Vehicle Family: ROUSH
 Sub-Category: Emergency
 THIS VEHICLE COMPLIES WITH
 EPA REGULATIONS FOR 2004
 YEAR HEAVY-DUTY VEHICLES
 VEHICLE WAS CERTIFIED
 EMERGENCY VEHICLE UNDER
 1037.1020

Job No.	38803	WO No.	308900
Tire-Limited Max Speed	68 mph	Chassis	Ember
TIRES	RIMS	COLD TIRE INFLATION	
315/80R22.5 (L)	22.50x9.00	861 kPa (125 PSI)	
315/80R22.5 (L)	22.50x9.00	827 kPa (120 PSI)	
425/65R22.5 (L)	22.50x12.25	827 kPa (120 PSI)	

TO ALL APPLICABLE U.S. FEDERAL MOTOR VEHICLE SAFETY
 ... DATE OF MANUFACTURE SHOWN ABOVE

DSC01425



DSC01426



DSC01427



DSC01428



DSC01429



DSC01430



DSC01431



DSC01432



DSC01433



DSC01434



DSC01435



DSC01436



DSC01437



DSC01438



DSC01439



DSC01440



DSC01441



DSC01442



DSC01443



DSC01444



DSC01445



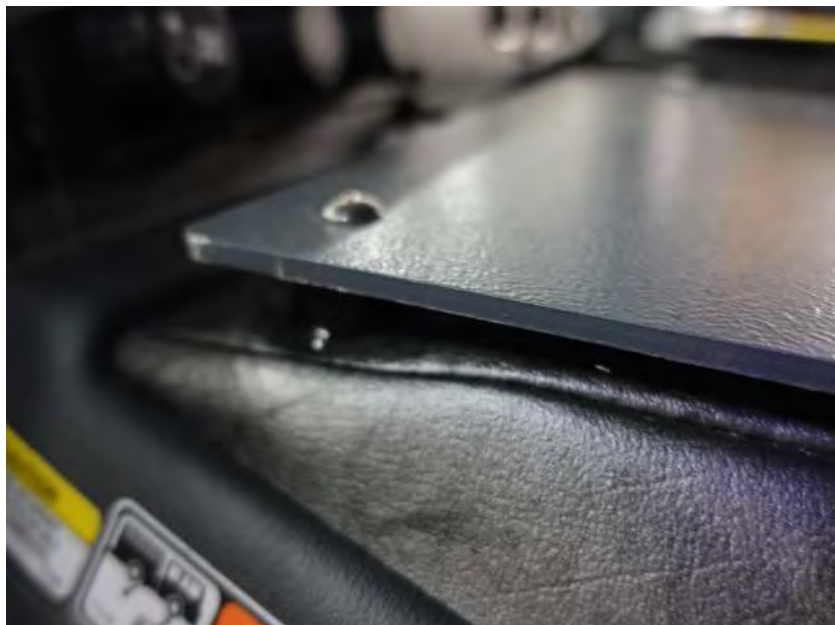
DSC01446



DSC01447



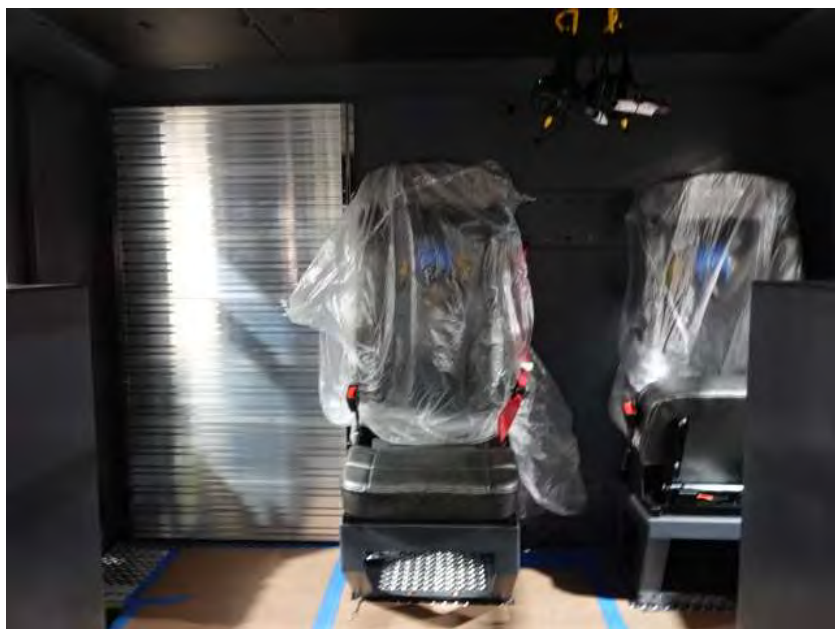
DSC01448



DSC01449



DSC01450



DSC01451



DSC01452



DSC01453



DSC01454



DSC01455



DSC01456



DSC01457



DSC01458



DSC01459



DSC01460



DSC01461



DSC01462



DSC01463



DSC01464



DSC01465



DSC01466



DSC01467



DSC01468



DSC01469



DSC01470



DSC01471



DSC01472



DSC01473



DSC01474



DSC01475



DSC01476



DSC01477



DSC01478



DSC01479



DSC01480



DSC01481



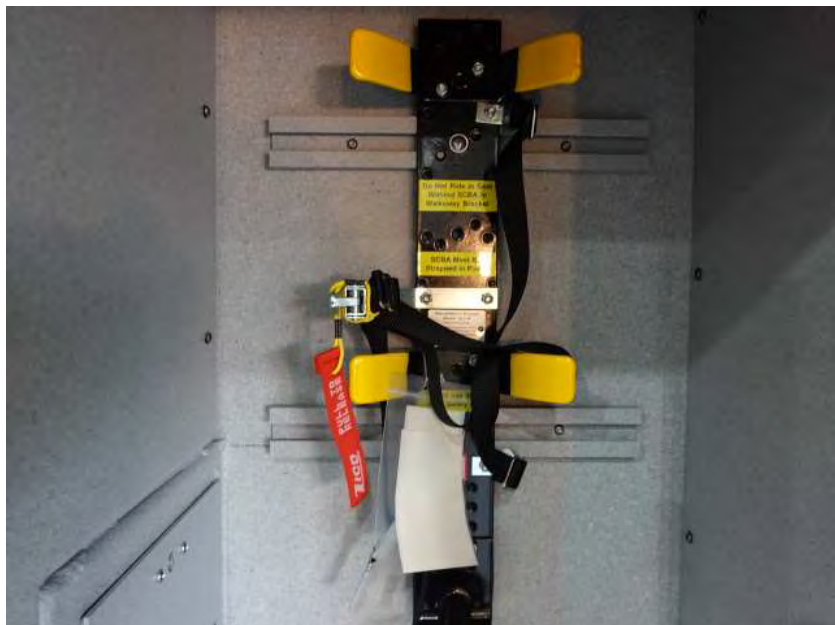
DSC01482



DSC01483



DSC01484



DSC01485



DSC01486



DSC01487



DSC01488



DSC01489



DSC01490



DSC01491



DSC01492



DSC01493



DSC01494



DSC01495



DSC01496



DSC01497



DSC01498



DSC01499



DSC01500



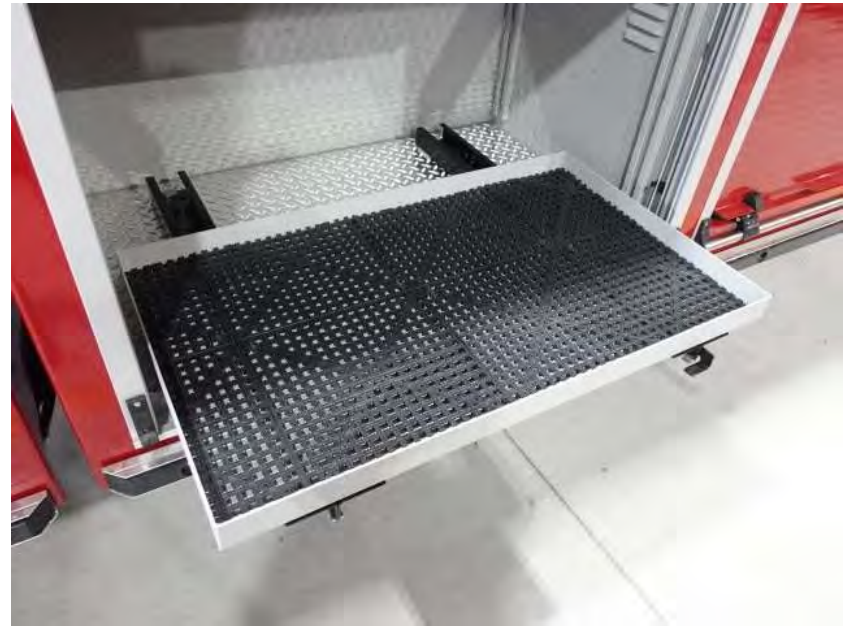
DSC01501



DSC01502



DSC01503



DSC01504



DSC01505



DSC01506



DSC01507



DSC01508



DSC01509



DSC01510



DSC01511



DSC01512



DSC01513



DSC01514



DSC01515



DSC01516



DSC01517



DSC01518



DSC01519



DSC01520



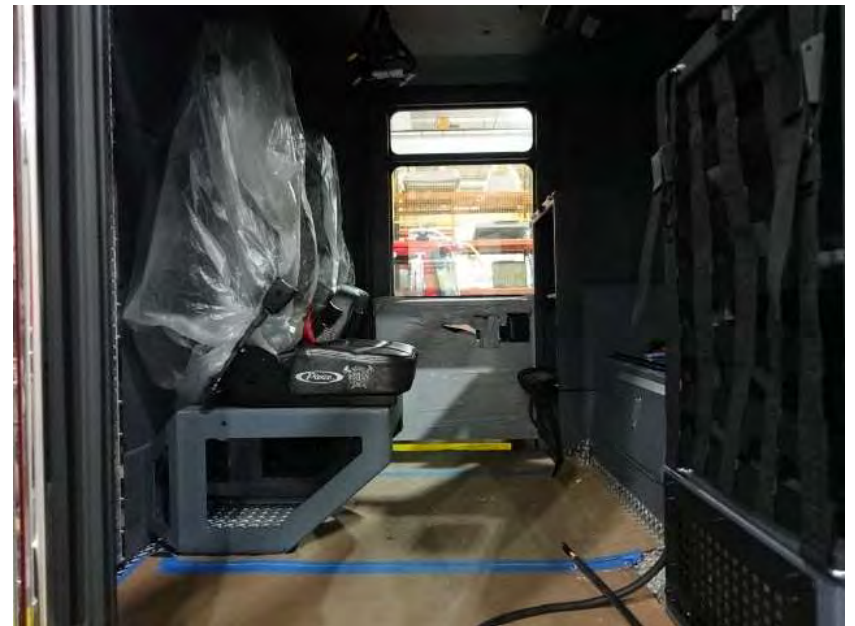
DSC01521



DSC01522



DSC01523



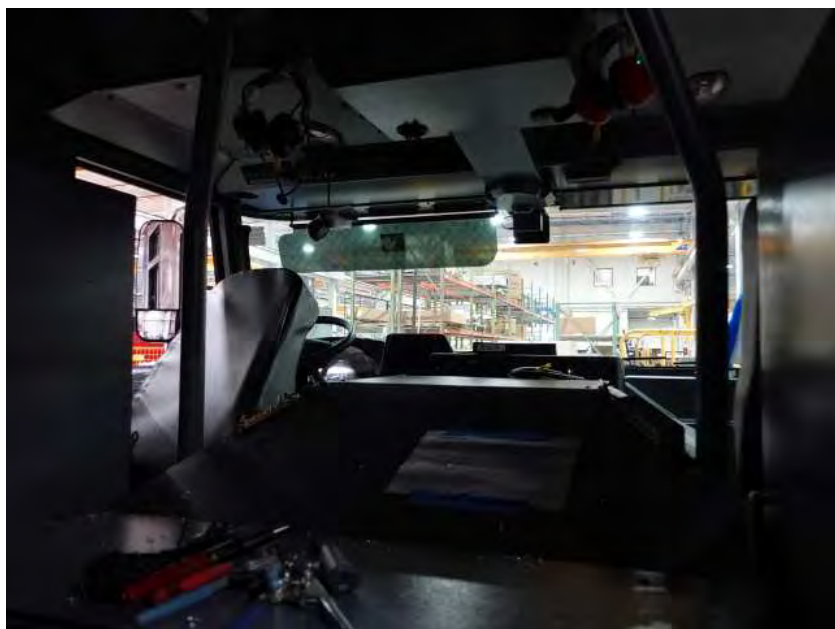
DSC01524



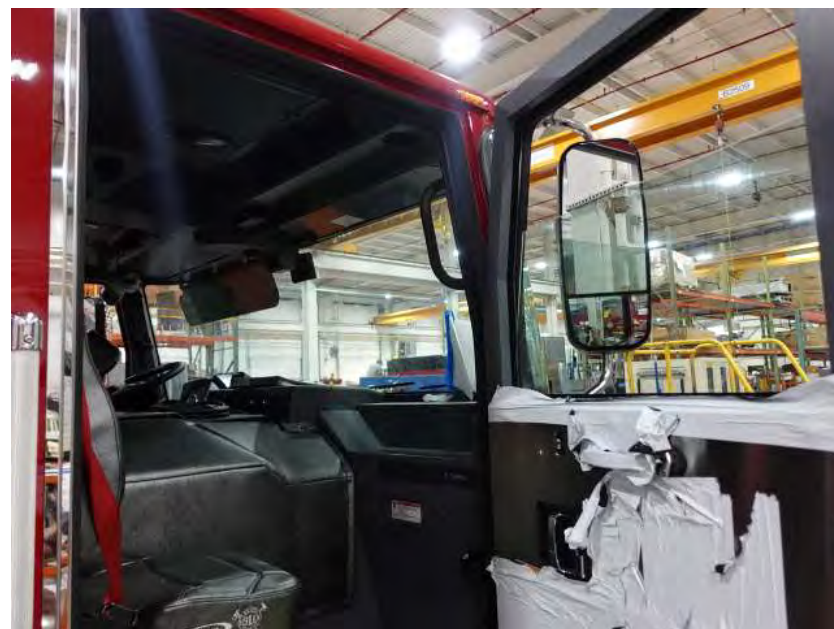
DSC01525



DSC01526



DSC01527



DSC01528



DSC01529



DSC01530



DSC01531



DSC01532



DSC01533



DSC01534



DSC01535



DSC01536



DSC01537



DSC01538



DSC01539



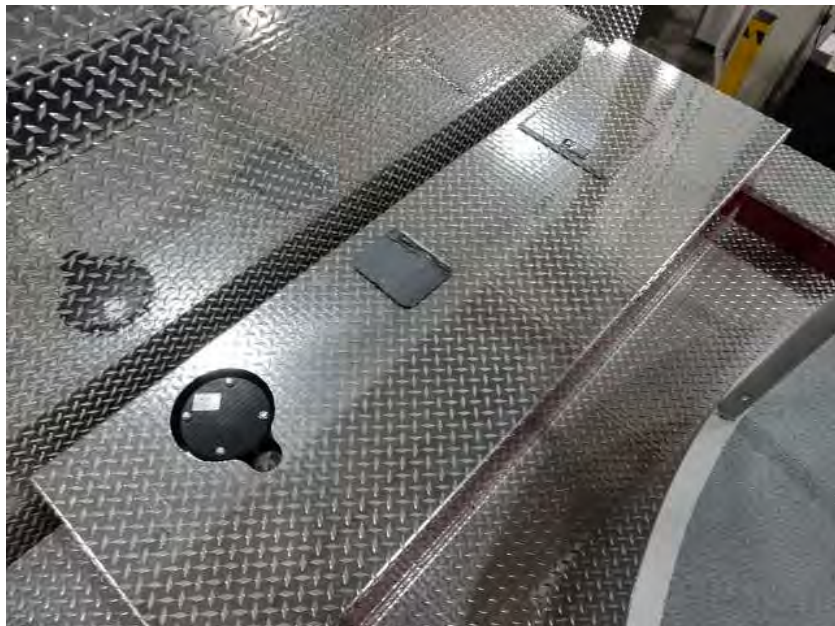
DSC01540



DSC01541



DSC01542



DSC01543



DSC01544



DSC01545



DSC01546



DSC01547



DSC01548



DSC01549



DSC01550



DSC01551



DSC01552



DSC01553



DSC01554



DSC01555



DSC01556



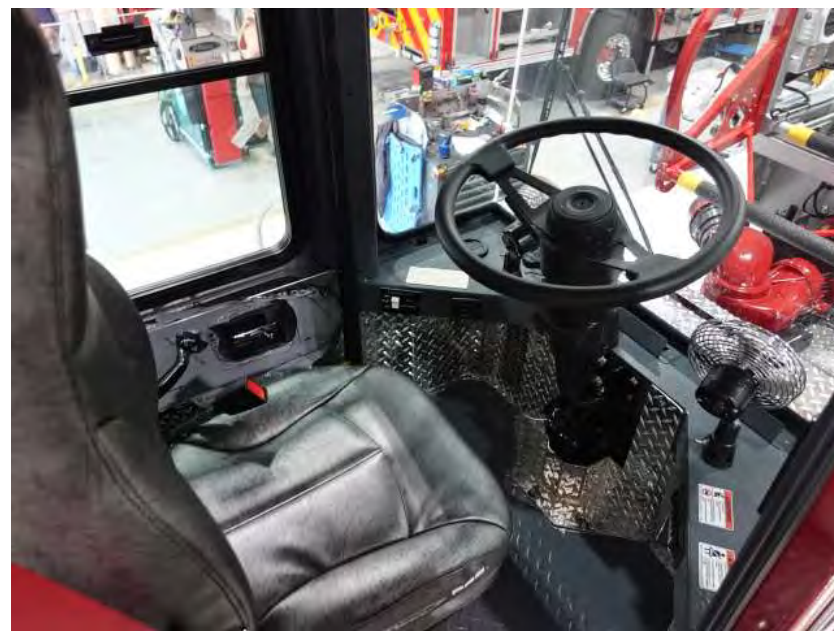
DSC01557



DSC01558



DSC01559



DSC01560



DSC01561



DSC01562



DSC01563



DSC01564



DSC01565



DSC01566



DSC01567



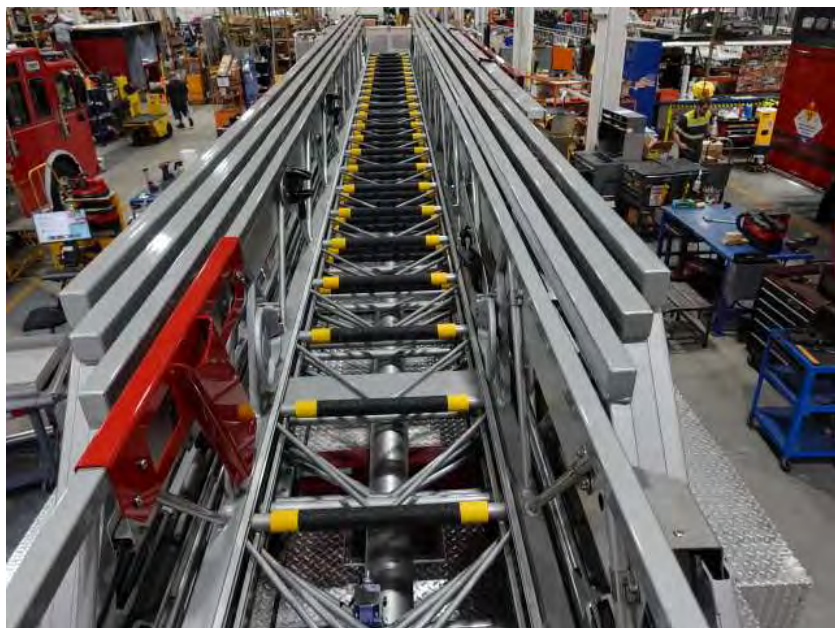
DSC01568



DSC01569



DSC01570



DSC01571



DSC01572



DSC01573



DSC01574



<https://allegiancefr.com>

POWERED BY
ALLEGIANCE
— TRUCKS® —



An Oshkosh Corporation Company