

In-Production Photo Report for Gloucester Fire Department, MA Job# 39041-01

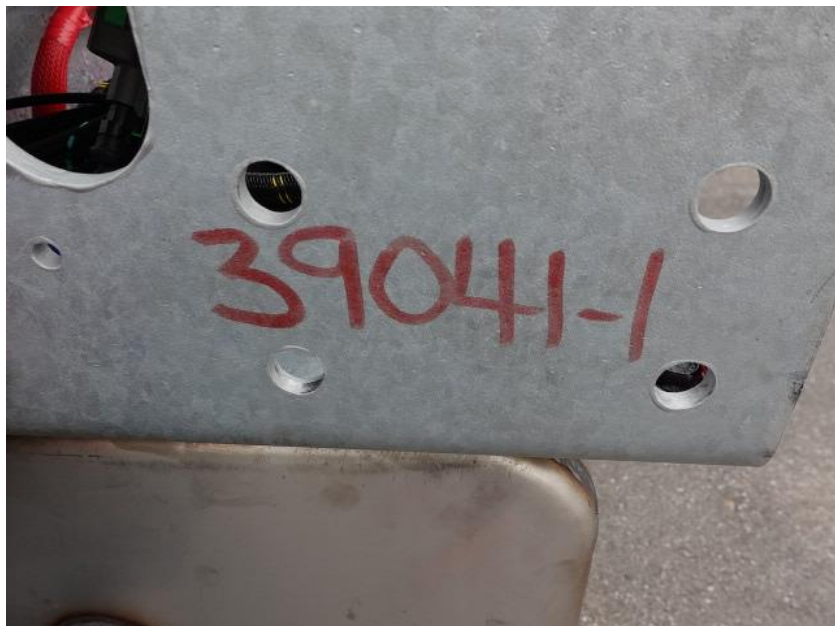
Status as of September 27, 2024

In this report the chassis was staged to continue assembly, the pump house was painted, and the body completed paint and began initial assembly. In the next report your chassis may remain staged to continue assembly, the pump house may continue initial assembly, and the body may complete initial assembly and be staged.



POWERED BY
ALLEGIANCE
TRUCKS®

For Valued Customers of



DSC03232



DSC03233



DSC03234



DSC03235



DSC03236



DSC03237



DSC03238



DSC03187



DSC03188



DSC03189



DSC03877



DSC03878



DSC03879



DSC03880



DSC03881



<https://allegiancefr.com>

POWERED BY
ALLEGIANCE
— TRUCKS® —



An Oshkosh Corporation Company